

## Stainless Steel Glass Hinge for Glass Door Glass Gate



### Quick details:

Product Name	Stainless Steel Glass Hinge for Glass Door Glass Gate
Material	Stainless steel 316
Finish	Mirror polished or satin brushed
For Glass Thickness	8-10mm
Drill Glass Holes	Diameter 12mm holes required in glass
3 Types Available	1) Glass to glass hinge <b>G-G1</b> 2) Glass to round post hinge <b>G-R1</b> 3) Glass to square wall/post hinge <b>G-W1</b>
Manufacture Method	Stamping (2.5mm thick)
Maximum Glass Door Leaf	<b>20kg</b>
Minimum Order Quantity	one piece
Sample	Available to check quality before order
Factory Inspection	Available
OME & ODM Service	Available

## Hinge types:

- 1) Glass to glass hinge
  - Model No.: G-G1
  - Net weight: 435g/piece



# G-G 1

- 2) Glass to round post
  - Model No.: G-R1
  - Net weight: 300g/piece



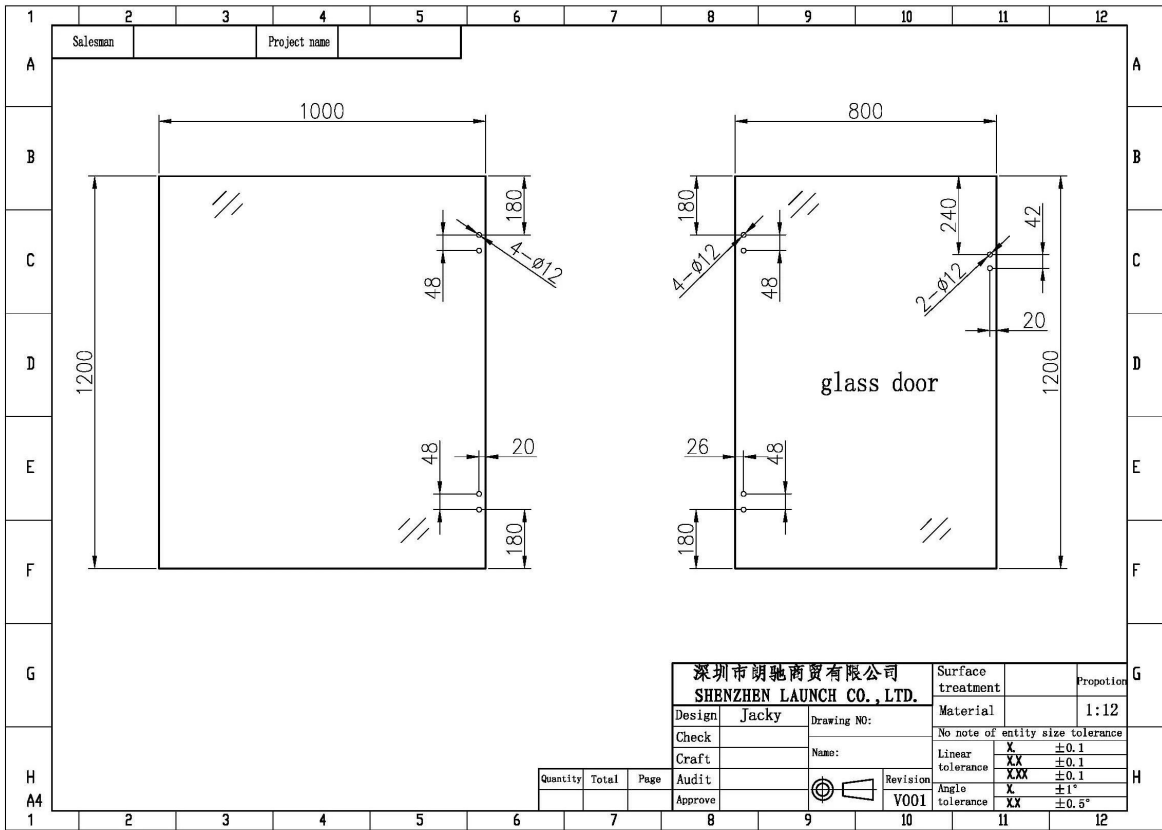
## **G-R 1**

- 3) Glass to square post/wall hinge
- Model No.: G-W1
- Net weight: 320g/piece



**G-W 1**

4) Drilled glass hole size



**Glass hinge application:**

KEBIL 科比奥®





**Packaging:**

1. One pair into one bubble bag, then into one white box.
2. Or packing as customers' requirements.



## Contact information:

Any enquiries or questions, please leave a message. Will get back to you as soon as possible!  
For any urgent enquiry, please get in touch as below:

-Wendy Email: [sales04@launch-china.cn](mailto:sales04@launch-china.cn)



-Mob/whats APP: +86-159 8933 9827