

Glass Standoff is a wonderful fasteners that can fix your glass stably with long bolt to wall or screw to wood. Nice user experiences and amazing external view proved it'll be very popular for many applications like home, villa, office building, etc. Staircase Railing and Balcony Railing are common used places

Below are our Standoff specifications:

STAND OFF



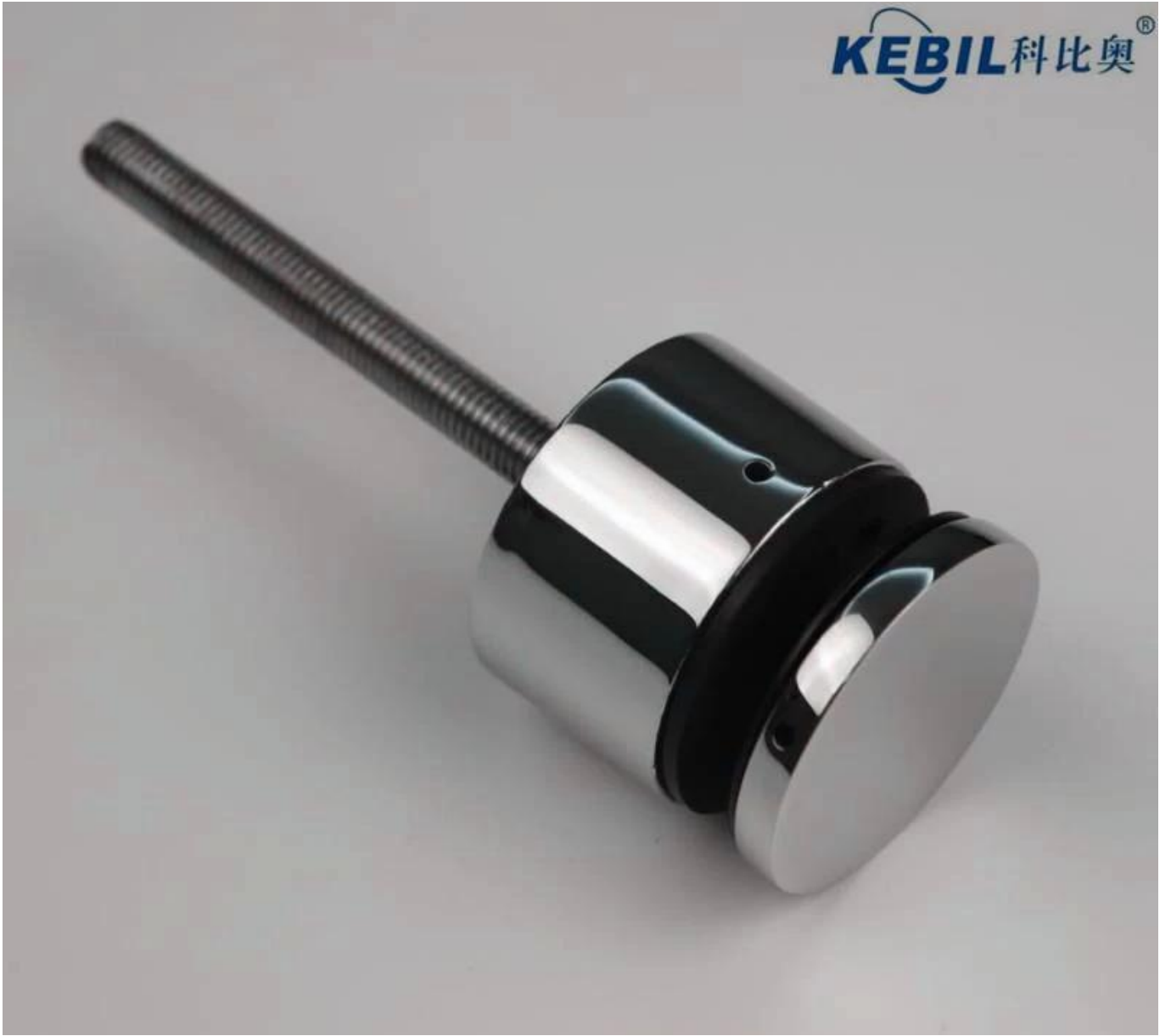
Part No.	Material	Finish	Body	Bolt size
▪ SF-30	▪ AISI 304 ▪ AISI 316	▪ Satin ▪ Mirror	▪ 30x10; 30x25mm	▪ M10x120 bolt ▪ M10x72 wood screw ▪ M8x100 bolt ▪ M8 x72 wood screw
▪ SF-40			▪ 40x10; 40x30mm	
▪ SF-50			▪ 50x12; 50x30mm	
▪ SF-50A			▪ 50x12; 50x50mm ▪ silicon rubber gasket included	

Part No.	Material	Finish	Body	Bolt size
▪ SF-38Z	▪ AISI 304 ▪ AISI 316	▪ Satin ▪ Mirror	▪ hollow type ▪ 38x7.5;38x38mm ▪ silicon rubber gasket included	▪ M8x70 hexagonal screw

Part No.	Material	Finish	Body	Mounting plate size
▪ SF-50T	▪ AISI 304 ▪ AISI 316	▪ Satin ▪ Mirror	▪ 50x10;50x30mm ▪ silicon rubber gasket included	▪ 200x100x10mm

Below are some types of our standard standoff, customized size and structure are also available when it's needed.

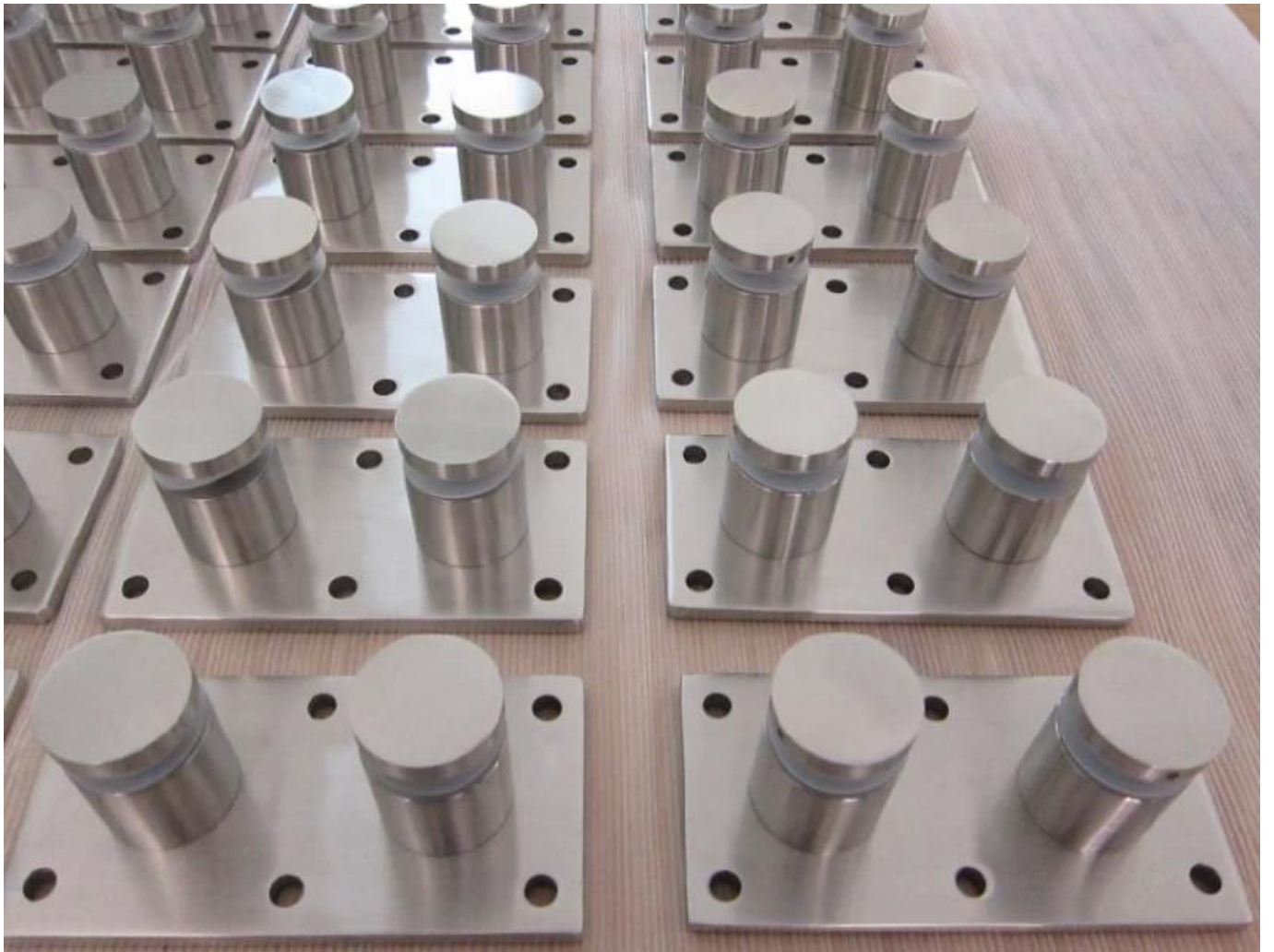
Model No.:SF-30



Model No.: SF-38Z



Model No.:SF-50T



Packing Pictures





Application Pictures

