

Stainless Steel Square Pipe Seamless Pipe 316L Stainless Steel Pipe

Stainless steel pipes are widely used for staircase handrail, balcony guardrail and fence designs.

Round, square and slot designs are available.



Standard: AISI, stainless steel pipe

Type: Welded

Stainless steel grade: AISI304, AISI316L

Application: Staircase handrail, balcony guardrail, fence design

Certification: ISO

Welding Line Type: TIG

Thickness: 1.5-2mm

Name: Stainless Steel Tube Pipe

Length: General 5.8m

Dimension: Round dia 50.8mm, 42.4mm, 38.1mm, thickness 1.5mm

Square 38mm, 40mm, 50mm, 50*10(mm), 50*25(mm), thickness 1.5mm

Surface treatment: Satin brushed or mirror polished(8K)

Shape: Round,square,slot

Color:As Requested

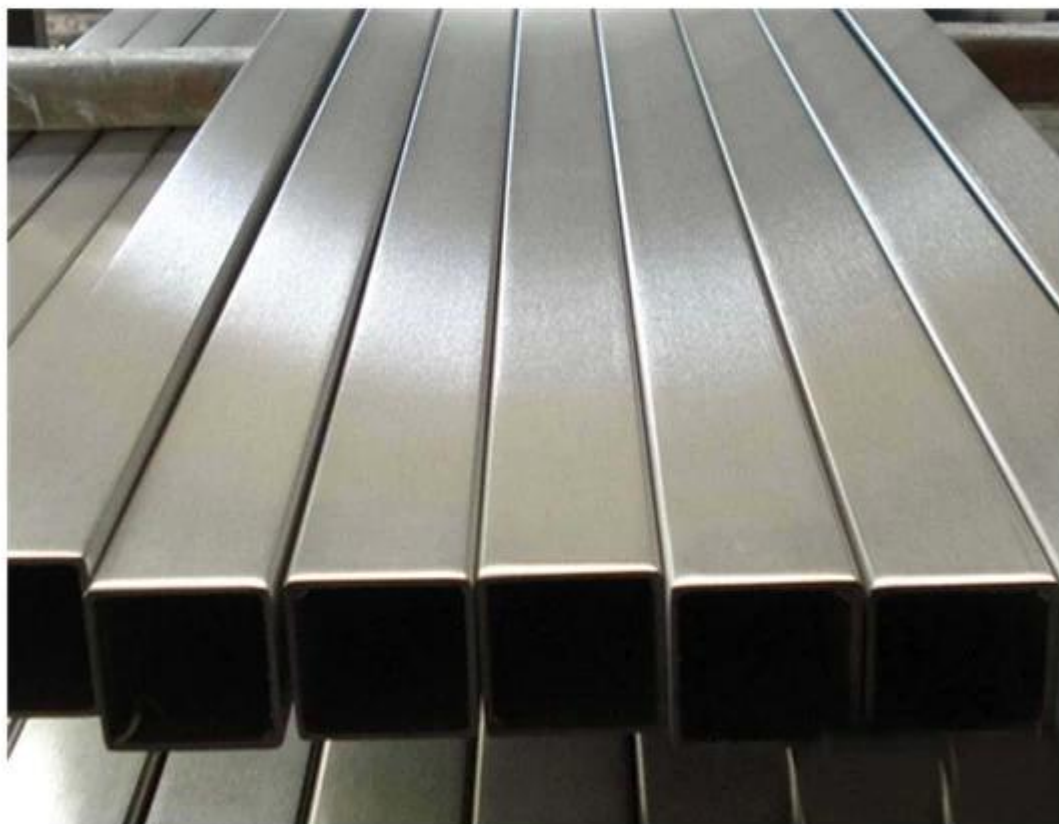
Dimensions available

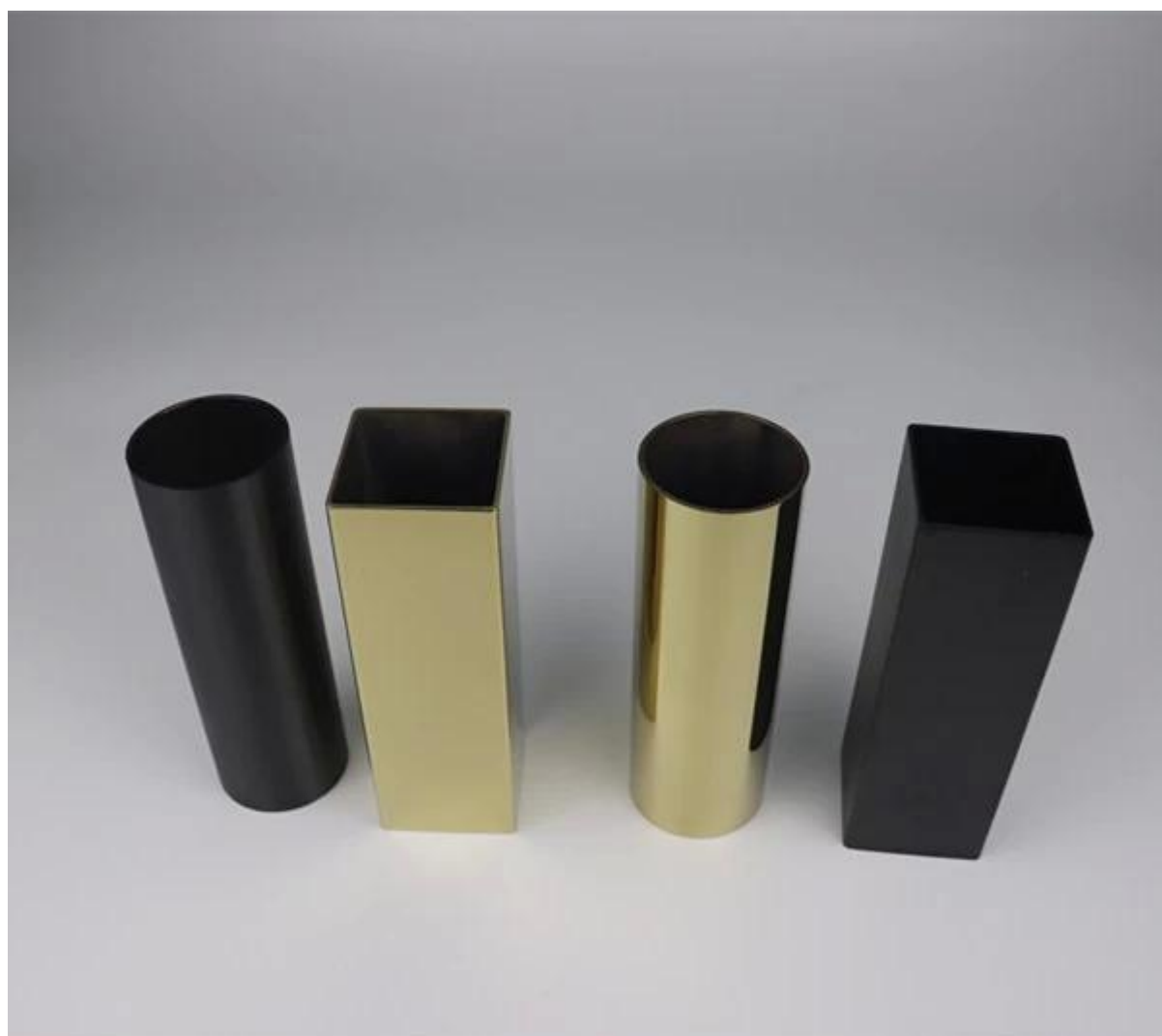


Material	Finish	Length	Size
<ul style="list-style-type: none">▪ AISI 304L▪ AISI 316L	<ul style="list-style-type: none">▪ Satin▪ Mirror	<ul style="list-style-type: none">▪ 5.8 meters	<ul style="list-style-type: none">▪ ϕ 50.8x1.5mm▪ ϕ 42.4x1.5mm▪ ϕ 38.1x1.5mm



Material	Finish	Length	Size
<ul style="list-style-type: none">▪ AISI 304L▪ AISI 316L	<ul style="list-style-type: none">▪ Satin▪ Mirror	<ul style="list-style-type: none">▪ 5.8 meters	<ul style="list-style-type: none">▪ 38 x 38 x 1.5mm▪ 40 x 40 x 1.5mm▪ 50 x 50 x 1.5mm▪ 50 x 10 x 1.5mm▪ 50 x 25 x 1.5mm





Projects Show for stainless steel pipe/tube:





Packing:



Company Information:

Shenzhen Launch Co., Ltd was established in 2004, located at Nanshan District, Shenzhen, and one hour by car from Hongkong International Airport. Our main product is high-grade building materials includes stainless steel balustrade post, staircase handrail, balcony guardrail, swimming pool fence and other high-grade building materials. All the products are designed strictly according to the high-end market requirements. We have our own factory in Tangxia Town, Dongguan, has a variety of precision equipment more than 50 sets: CNC lathe, milling machine, punching machine, pipe cutter, argon welder, drilling machine, polisher, etc. which can provide customers with complete product processing services. With the German SPECTRO Spectrometer, we insist on testing every batch of materials to ensure that the material is highly qualified. We also have hardness gauge, secondary element and other test equipment to ensure the products meets customers' requirements.

ABOUT US

Our Team



OUR ADVANTAGE

Please do not hesitate to contact us if you have any requirement regarding our production lines, you can expect a timely reply with professional solutions!



Own factory, shortest lead time.



Can help customers design product drawings based on customer ideas and design engineering installation drawing according to the customer site sketch.



Sample order, trial order acceptable.



Provide material test report to ensure that the material is qualified.



13 years of industry experience, we can help customers recommend the best solution to help customers save cost.

OUR FACTORY

More than 13 years experience in hardware industry design and processing, we can provide customized services from design to the sample and small batch trial production.



OUR CERTIFICATE

With premium quality, competitive price and superior service, we won a lot of customers' favor.

Our products are popular in North America, European and Australia.



PRODUCTION PROCESS



Casting



CNC lathe



CNC Milling



Stamping



Drilling & Tapping



Polishing



PACKAGING & DELIVERY



PAYMENT & TRANSPORTATION

Welcome Alibaba Trade Assurance Order!



1 Start an order

2 Negotiate terms with our sales service & confirm order

3 Make payment

4 Alibaba provide full assurance



FAQ

1. Are you factory?

Yes, we are factory.

2. Do you offer free samples?

Yes, we offer free samples, but customers need to pay express charges.

3. What materials do you have?

We have the material of stainless steel 304, 316, 316L and Duplex 2205.

4. What is your MOQ?

MOQ of order required is 1 pc.

5. What kind of payment do you accept?

We accept the payment of T/T, LC, PayPal, West Union, etc.

6. What is your payment term?

Our payment term is T/T(100% or 30/70)or LC at sight .

7. What is your delivery time?

Our delivery time is from 5days to 30days base on your quantity.

8. Do you offer OEM & ODM service?

Yes we offer OEM&ODM service.

9. Do you offer after-sales service?

Yes, we offer after-sales service. Any complaint for orders will be dealt with in time within 12 hours.

Contact us:

Email: sales03@launch-china.cn

HP/WhatsApp/WeChat: +8613686807796