

Stainless Steel End Cap for tube

Here introduce 4 types of our common used end caps, other customized shape and size need further evaluation. Welcome your inquiry!!!

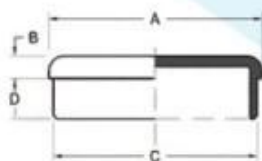
Frank Fang

Wechat/Whatsapp: +8615906261741,

Email: sales02@launch-china.cn

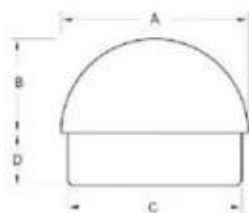
Round Type

LCH-209/50.8



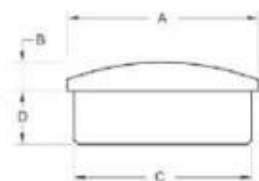
Part No.	size				Material	Finish
	A	B	C	D		
LCH-209/25.8	25	6	22	10	▪ AISI 304 ▪ AISI 316	▪ Satin ▪ Mirror
LCH-209/30	30	5	27	12		
LCH-209/33	33	5	30	12		
LCH-209/38	38	5	35	12		
LCH-209/40	40	5	37	12		
LCH-209/43	43	5	40	12		
LCH-209/50.8	50.8	5	47.8	12		
LCH-209/63.5	63.5	6	60.5	12		
LCH-209/43	43	3	40	12		
LCH-209/50.8	50.8	3	47.8	12		

LCH-213/50.8



Part No.	size				Material	Finish
	A	B	C	D		
LCH-213/43	43	22	40	12	▪ AISI 304	▪ Satin
LCH-213/50.8	50.8	25	47.8	12	▪ AISI 316	▪ Mirror

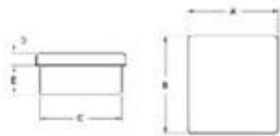
LCH-214/50.8



Part No.	size				Material	Finish
	A	B	C	D		
LCH-214/43	43	6	40	12	▪ AISI 304	▪ Satin
LCH-214/50.8	50.8	10	47.8	12	▪ AISI 316	▪ Mirror

Square Type

LCH-211/50



Part No.	size					Material	Finish
	A	B	C	D	E		
LCH-211/20	20	20	17	5	12	■ AISI 304 ■ AISI 316	■ Satin ■ Mirror
LCH-211/25	25	25	22	5	12		
LCH-211/30	30	30	27	5	12		
LCH-211/40	40	40	37	5	12		
LCH-211/50	50	50	47	5	12		
LCH-212	40	20	37x17	5	12		

End cap pictures





Application pictures







WHY CHOOSE US



15 YEARS EXPERIENCE

We have been manufacturing railing hardware since 2004.



ONE STOP SERVICE

We provide integrated railing solutions.
We manufacture.
We deliver.



PROFESSIONAL R&D TEAM

We have engineering experts for developing new products.



TOP QUALITY & GOOD PRICE

We are strict on quality control as well as cost evaluation.



ABOUT US

Shenzhen Launch Co., Ltd was established in 2004, located at Nanshan District, Shenzhen, and one hour by car from Hongkong International Airport. Our main products are high-grade building materials including stainless steel balustrade post, staircase handrail, balcony guardrail, swimming pool fence and other high-grade building materials. All the products are designed strictly according to the high-end market requirements. We have our own factory in Tangxia Town, Dongguan, with more than 50 sets of various precision equipments, such as CNC lathe, milling machine, punching machine, pipe cutter, argon welder, drilling machine, polisher, etc. which can provide customers with complete product processing services.

FAQ

1. What materials do you have?

SS304, SS316, SS316L, Duplex 2205, etc.

2. Can you send me your whole price list?

Sorry, as the price related to many factors, such as quantity, material type, surface treatment and so on, we will offer you exact quote after we confirm your detailed requirements.

3. Do you offer OEM & ODM service?

Yes, we can make the products according to your technical drawings or samples, we are professional in investment casting, die casting, stamping, CNC machining, etc.

4. What kind of payment you accept?

T/T, L/C, PayPal, West Union, etc.

5. What is your payment term?

TT(30/70) or LC at sight.

6. What is your delivery time?

Within 5 workdays for hot-sale items, 15-25 workdays for batch orders.

7. Do you offer after-sales service?

Of course, any question after you purchase our products, we will get back to you within 24 hours.