

Stainless Steel Tube Pipe For Handrial Or Railing Balustrade Post

Product Description

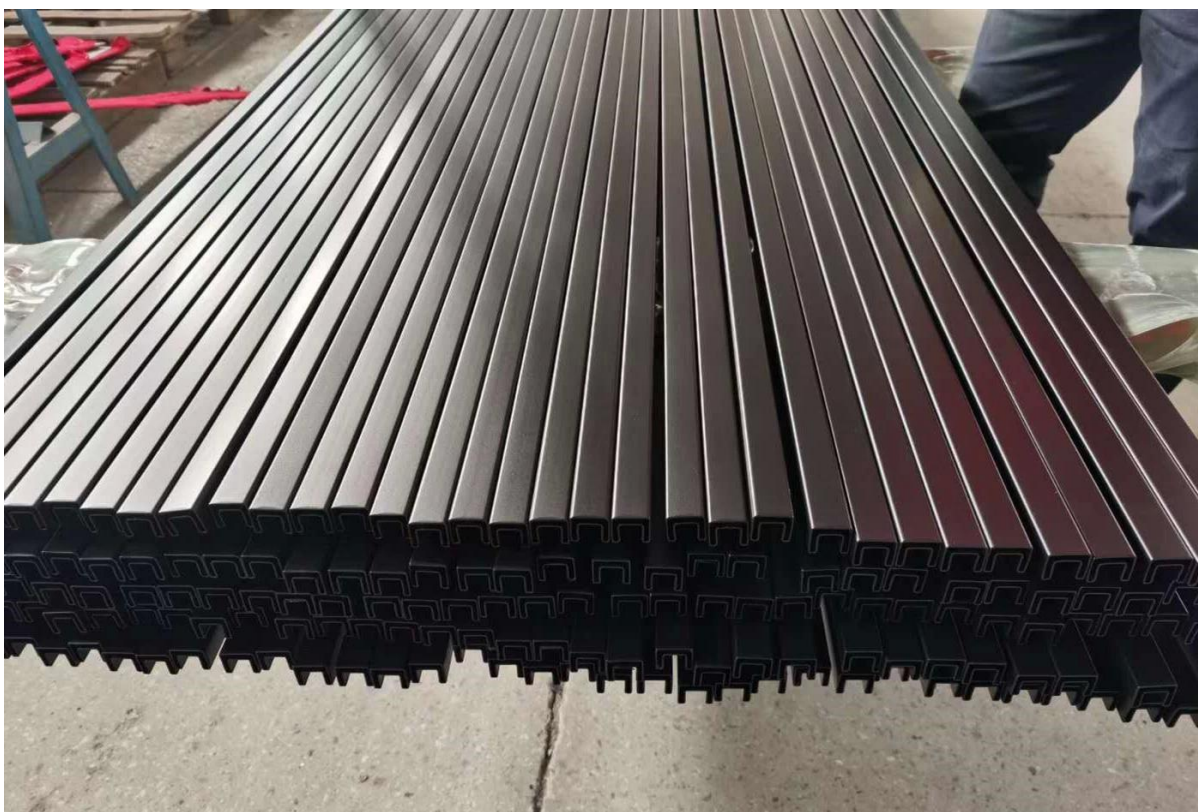
Product Name	Stainless Steel Tube Pipe For Handrial Or Railing Balustrade Post
Material	Stainless steel 304/316L
Finish	Mirror polished or satin brushed or black or gold
Standard Length	5.8m/6.0m per length, or customers' length
Tube/pipe Types	1) Square stainless steel tube/pipe 2) Round stainless steel tube/pipe Various dimension available. Please see below catalogue
Application	Balustrade handrail tube, stainless steel railing, stainless steel post, glass railing handrails
Minimum Order Quantity	No limited. Customer can order as per job requirements.
Sample	Available to check quality before order
Factory Inspection	Available
Packaging	Bubble bag - cardboard sleeve - metal frame
Certified	Yes
OME & ODM Service	Available

Stainless steel Balustrade tube/pipe Details

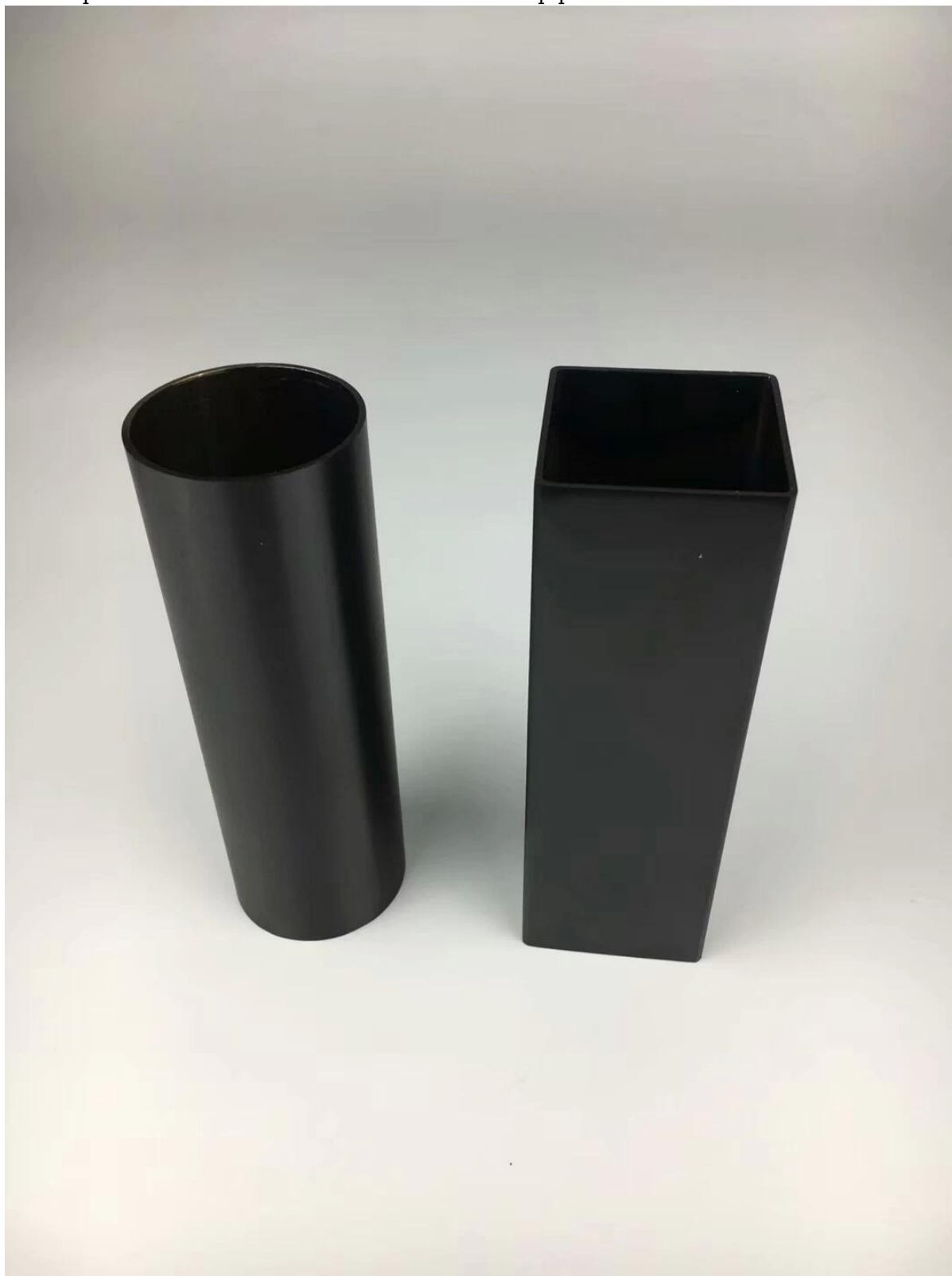
Stainless steel tube pipe



Black powder coating stainless steel balustrade tube pipe



Electroplate black stainless steel balustrade tube pipe



Electroplate gold stainless steel balustrade tube pipe



Normal mirror and satin finish stainless steel tube pipe



Stainless steel Balustrade Tube/pipe Packaging

1. Bubble bag - cardboard sleeve - metal frame
2. Or packing as customers' requirements.





Products process:

PRODUCTION PROCESS



Casting



CNC lathe



CNC Milling



Stamping



Drilling & Tapping



Polishing



Company info:

Shenzhen Launch Co., Ltd was established in 2004, located at Nanshan District, Shenzhen, and one hour by car from Hongkong International Airport. Our main product is high-grade building materials includes stainless steel balustrade post, staircase handrail, balcony guardrail, swimming pool fence and other high-grade building materials. All the products are designed strictly according to the high-end market requirements. We have our own factory in Tangxia Town, Dongguan, has a variety of precision equipment more than 50 sets: CNC lathe, milling machine, punching machine, pipe cutter, argon welder, drilling machine, polisher, etc. which can provide customers with complete product processing services. With the German SPECTRO Spectrometer, we insist on testing every batch of materials to ensure that the material is highly qualified. We also have hardness gauge, secondary element and other test equipment to ensure the products meets customers' requirements.

ABOUT US



Contact details for more information:

Wendy: sales04@launch-china.cn

Phone/whatsapp/Wechat: 0086 15989339827