

Stainless Steel Wall Mount Glass Standoff Holder for frameless glass balcony railing designs .

Model No.	SF-50
Material	304/316 stainless steel
Finish	satin; mirror ; matt black
Diameter	50mm
Dimensions	50*12mm, 50*30mm
Mount	concrete , with M12*120 bolt ; wood , M12*72
Glass thickness	10mm-19mm
MOQ	20 pcs
Application	balcony/pool fence/stair railings
Production time	1-3 weeks

Satin finish Stainless Steel Wall Mount Glass Standoff Holder -



Mirror finish Stainless Steel Wall Mount Glass Standoff Holder -



Matt black powder coating Stainless Steel Wall Mount Glass Standoff Holder -



Various designs & sizes of Stainless Steel Wall Mount Glass Standoff Holder-



Part No.	Material	Finish	Body	Bolt size
<ul style="list-style-type: none"> SF-30 SF-40 SF-50 SF-50A 	<ul style="list-style-type: none"> AISI 304 AISI 316 	<ul style="list-style-type: none"> Satin Mirror 	<ul style="list-style-type: none"> 30x10; 30x25mm 40x10; 40x30mm 50x12; 50x30mm 50x12; 50x50mm silicon rubber gasket included 	<ul style="list-style-type: none"> M10x120 bolt M10x72 wood screw M8x100 bolt M8 x72 wood screw



Part No.	Material	Finish	Body	Bolt size
<ul style="list-style-type: none"> SF-38Z 	<ul style="list-style-type: none"> AISI 304 AISI 316 	<ul style="list-style-type: none"> Satin Mirror 	<ul style="list-style-type: none"> hollow type 38x7.5;38x38mm silicon rubber gasket included 	<ul style="list-style-type: none"> M8x70 hexagonal screw



Part No.	Material	Finish	Body	Mounting plate size
<ul style="list-style-type: none"> SF-50T 	<ul style="list-style-type: none"> AISI 304 AISI 316 	<ul style="list-style-type: none"> Satin Mirror 	<ul style="list-style-type: none"> 50x10;50x30mm silicon rubber gasket included 	<ul style="list-style-type: none"> 200x100x10mm

Adjustable glass standoff

- Material- 304/316 stainless steel
- Finish – satin / machined finished / mirror / black electro plating
- Adjustable distance from wall to glass

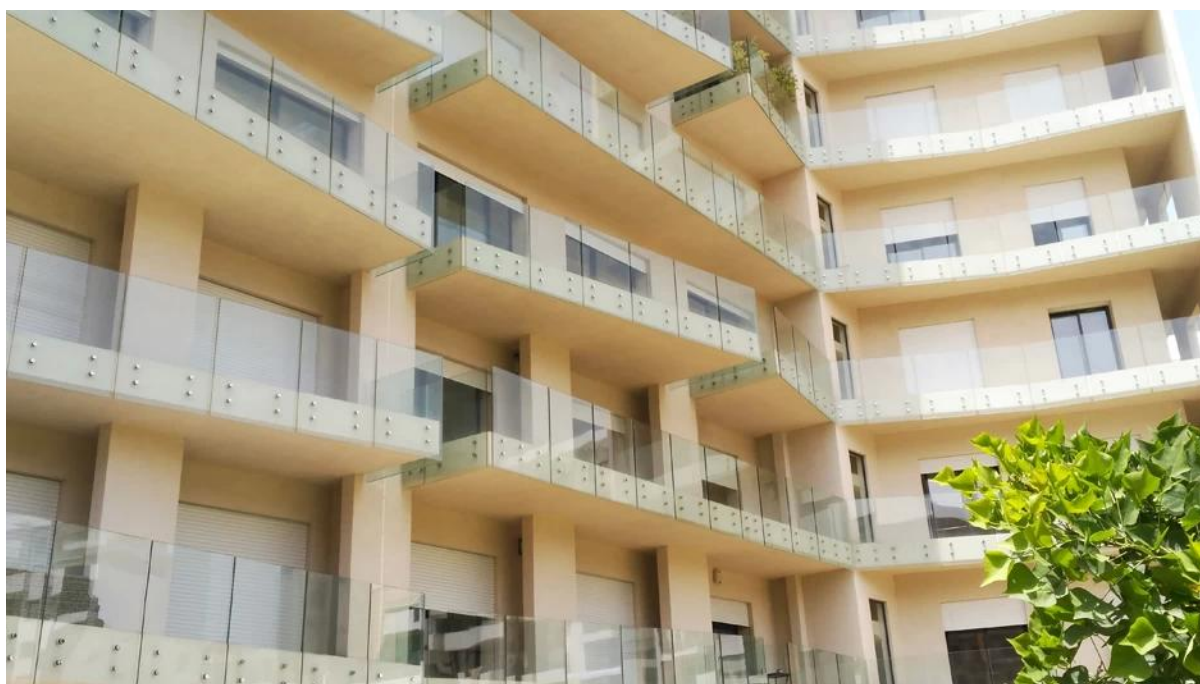


Standoff size	
Diameter	Length
1 ½" (38mm)	1 ¼" (32mm)
1 ½" (38mm)	1 ½" (38mm)
1 ½" (38mm)	2" (50mm)
2" (48mm)	1 ½" (38mm)
Hanger Bolt	
Type	Size
Hanger bolt	1/2" x 2 1/2" (M12*63mm , with inner hexagon , wood screw L=50mm)
Hanger bolt	1/2" x 3 1/4" (M12*83mm , with inner hexagon , wood screw length 50mm)
Hanger bolt	1/2" x 3 1/2" (M12*90mm , with inner hexagon , wood screw length 50mm)
Hanger bolt	1/2" X 4" (M12*102mm , with inner hexagon , wood screw length 50mm)
Hanger bolt	1/2" X 5" (M12*127mm , with inner hexagon , wood screw length 50mm)



Project galleries with Stainless Steel Wall Mount Glass Standoff Holder -

KEBIL 科比奥®





For more details please kindly send email to: sales01@launch-china.cn. Thank you!