

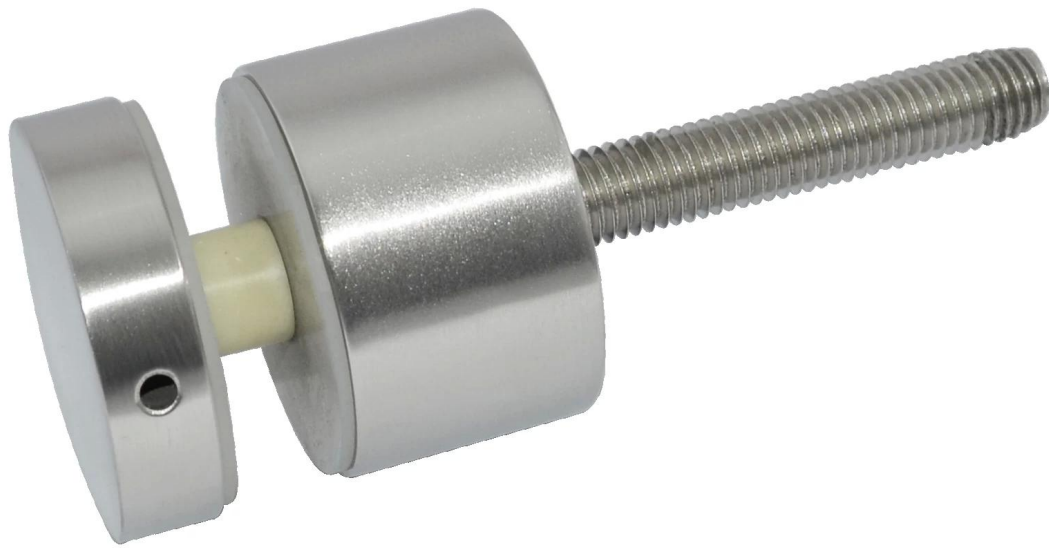
Stainless steel frameless glass balustrade used standoff SF-50

Dimension: 50x10mm cap, 50x30mm body, M12x120 bolt
Silicon rubber gasket included

[stainless steel standoff pin, glass holder on the wall](#)



SF-50



We also have smaller standoff SF-30

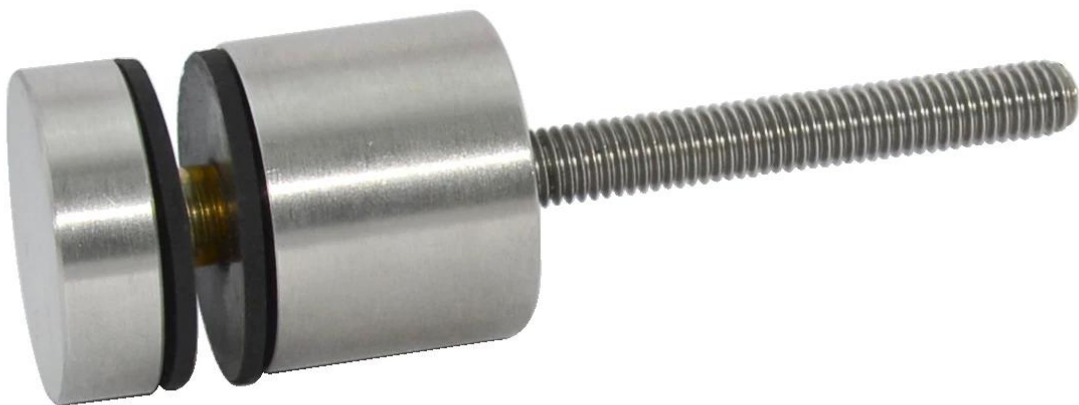
[frameless glass railing standoffs, frameless glass balustrade stand offs](#)

Dimension: 30x10mm cap, 30x25mm body, M8x100 bolt

Silicon rubber gasket included



SF-30



Meanwhile, we have twin-standoff for the bigger size glass
[frameless glass railing work with stainless steel 316 glass standoff stand](#)

[offs](#)

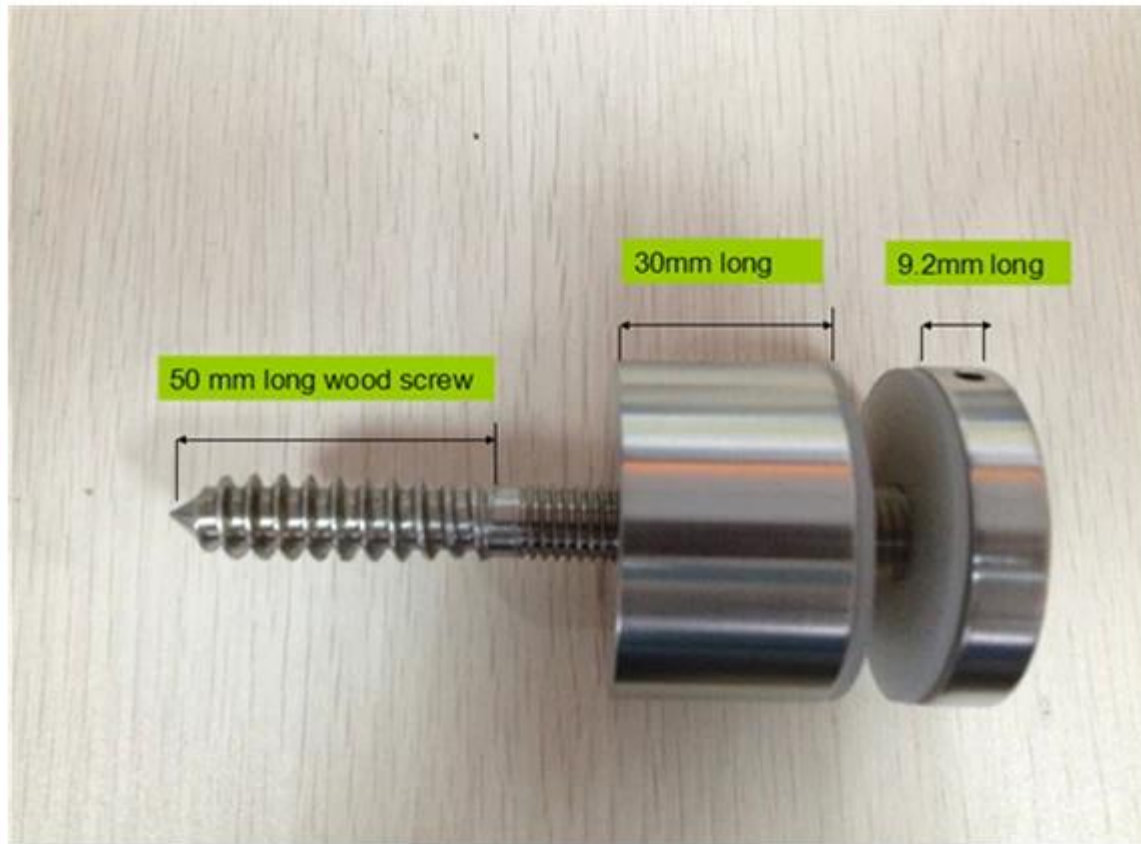


SF-50T

The bolt can be changed to wood screws:

[glass mounting standoff with M12 x120 mm bolts to hold 8mm up to 19mm thick glass](#)

ShenZhen Launch Co.,LTD



E-mail:sales04@launch-china.cn

Project



For frameless glass fence, we do have another design used glass spigot
[base plate glass holder, frameless glass spigot, round glass spigot on the floor](#)



RBM

[stainless steel square glass spigot with base plate on the floor for glass balustrade](#)



SBM

