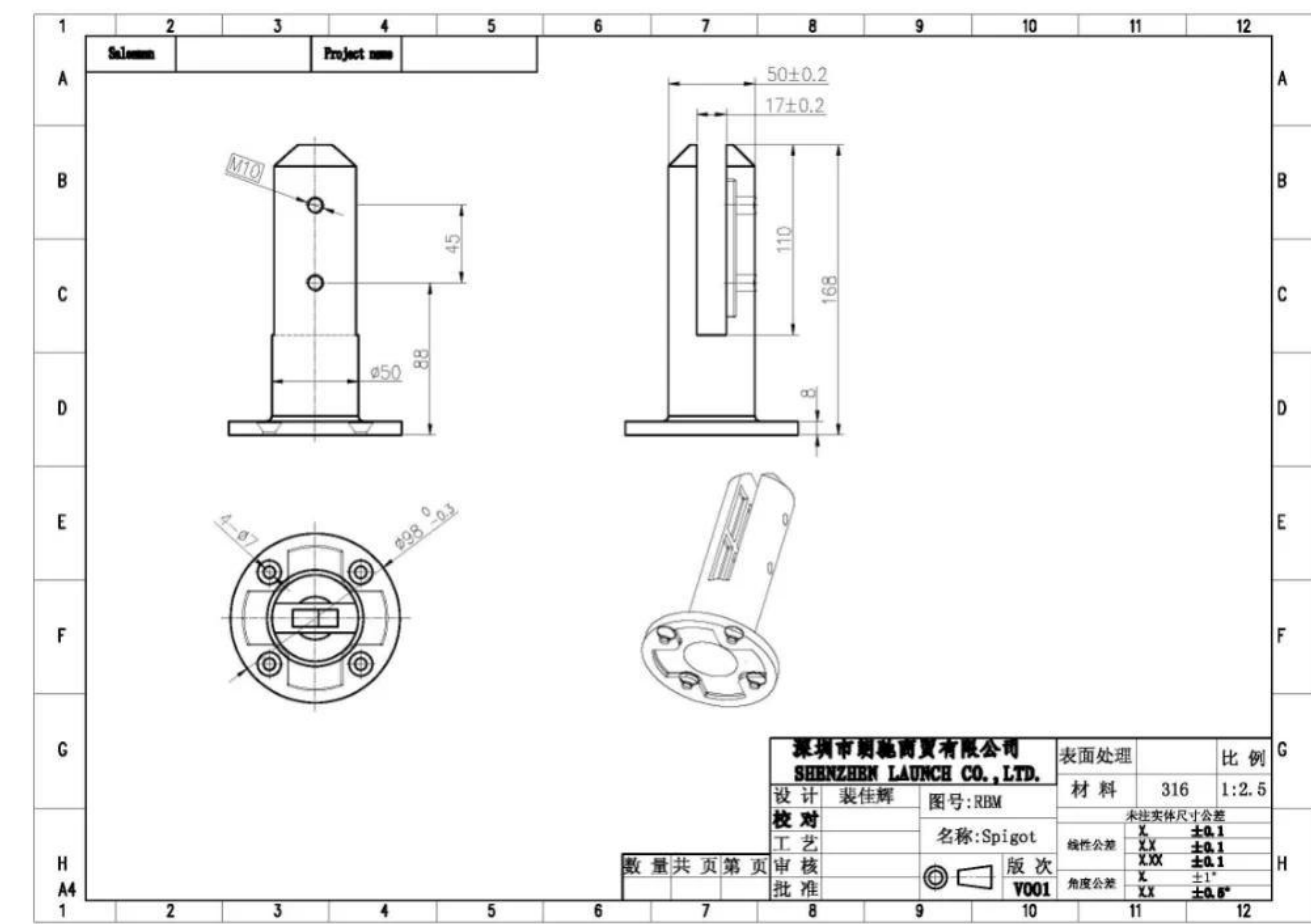


Round Base Mount type Duplex 2205 Stainless steel glass clamp pool fence spigot for 1/2" thickness glass .

## 1. Features of Stainless steel glass clamp pool fence spigot for 1/2" glass , RBM

Spigot body	Duplex 2205
Material for screws , base cover , levelling plate	316 stainless steel
Finish	Brushed/polished/Black/Gold
Glass thickness	10-13.52mm thickness glass
Height	168mm ; or can be customized
Plastic gasket	Made of nylon material , it can last for lifelong time
Concrete bolt to suit	M8*100
Unit Weight per pc	1.2kg
In stock	Yes
MOQ	2 pcs

## 2. Dimensions of RBM glass spigot-



## 3. Loading test &Material Stainless steel glass clamp pool fence spigot-

## LOADING TEST FOR SBM

### Introduction

MTS Metallurgical Testing Services was engaged to witness the installation of a sample pool fence spigot and to subsequently conduct load tests on the spigot to the requirements of Australian Standard AS1926.1 - 2012.

Standard/Specification AS 1926.1 - 2012, Section 3.2 and Appendix B

### Results Summary

(For details of individual tests, refer to the tables on the following pages.)

ID	Item/Item No.	Dimensions/Type/Details	Finish	Overall Assessment
14117/01	SSRM316	60mm Square, Base Plate 316 Stainless steel	316i	COMPLIES

### Remarks

After completion of the testing, the spigot was found to be in sound condition with no breakage, tearing or signs of fracture and no looseness of the fixings.



Colin Cousins  
Metallurgical Testing Manager



Accreditation No: 15624  
Accredited for compliance  
with ISO/IEC 17025

## Strength Test

Test Specification AS 1926.1 - 2012, Appendix B Test Procedure MTS-TP3.1 Compression Tests - Products

Specimen ID	Observations	Assessment
14117/01	Test Equipment: Hydraulic ram and 10,000 N load cell Test Load: 330N Load Duration: 45 Secs Deflection under load: 1 mm Permanent Deflection after removal of test load: 0 mm	COMPLIES

Requirements No permanent damage or loosening of fixings.



12/16/2020 5:54:18 PM

Method: Fe-30  
 Comment: Cr-, Cr/Ni-steel  
 Type Standard 18--8

12/16/2020 5:54:09 PM

Type corr.concentr.

Sample Name:

Sample ID:

	C	Si	Mn	P	S	Cr	Mo	Ni
	%	%	%	%	%	%	%	%
< x > (1)	0.0224	0.8873	1.1010	0.0263	0.0032	21.6796	3.0718	5.5691

	Al	Co	Cu	Nb	Ti	V	W	Pb
	%	%	%	%	%	%	%	%
< x > (1)	< 0.0005	0.0797	0.1603	< 0.0002	0.0044	0.0893	0.0305	< 0.0002

	Sn	Sb	B	N	Fe			
	%	%	%	%	%			
< x > (1)	0.0092	< 0.0004	0.0024	0.1024	67.1600			

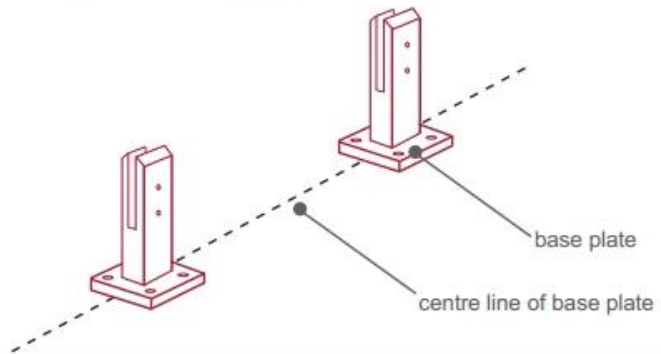
#### 4. Installation Instructions for RBM glass spigot-



## fixing method: base plate spigots

Mark out the centre line of proposed glass fence with a chalk line. Determine clamp location based on a sheet size (recommendation on pages 1 & 2). Use base plate as a template to mark out the hole positions and drill holes to suit.

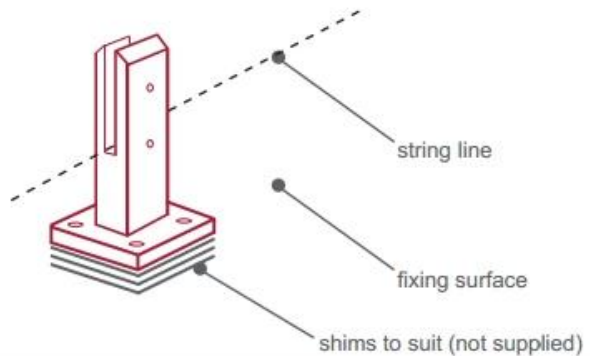
**Note:** Do not exceed 100mm gaps between glass panels. Optimum gap is 40mm to 60mm



Now the base plated spigots can be fitted to the floor and plumbed via shims (not supplied) under the base plates. Be sure to tighten firmly as the smallest of movement at the base plate will result in noticeable movement at the bottom of the glass fence.

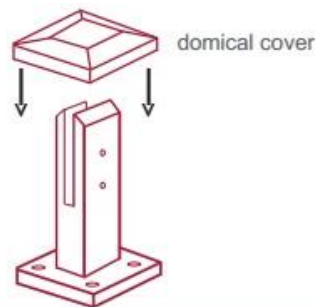
**Tip:** By setting the two outer spigots of your total span, a string line can be run in the 'throat' of the spigots, giving correct height for all spigots in between

**Note:** Do not exceed 100mm gap from the fixing surface to the bottom of the glass



When all spigots are installed, slip domical cover the top of the spigot to hide fixings. It will be necessary to turn the adjustment screws on the spigot face all the way in to allow cover to pass over

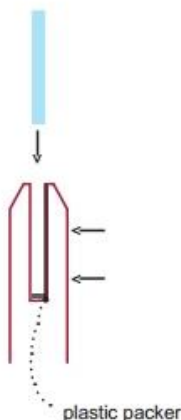
**Note:** Same installation method applies to round base plate spigot



The glass is then installed to the spigots. Place plastic packers between glass & spigot, at no stage should glass touch the metal

### How adjustability works:

1. Place glass in spigot
2. Fix/ tension glass both sides with allen key



## 5. Packing details for RBM -

1 pc into a white box ; 12 pcs into a carton-



2014/03/19







**6. Mass Production Process for SBM glass spigot -**







**7. More models of glass spigot for your selection-**





MODEL # SBM



MODEL # SCM



MODEL # RBM



MODEL # RCM

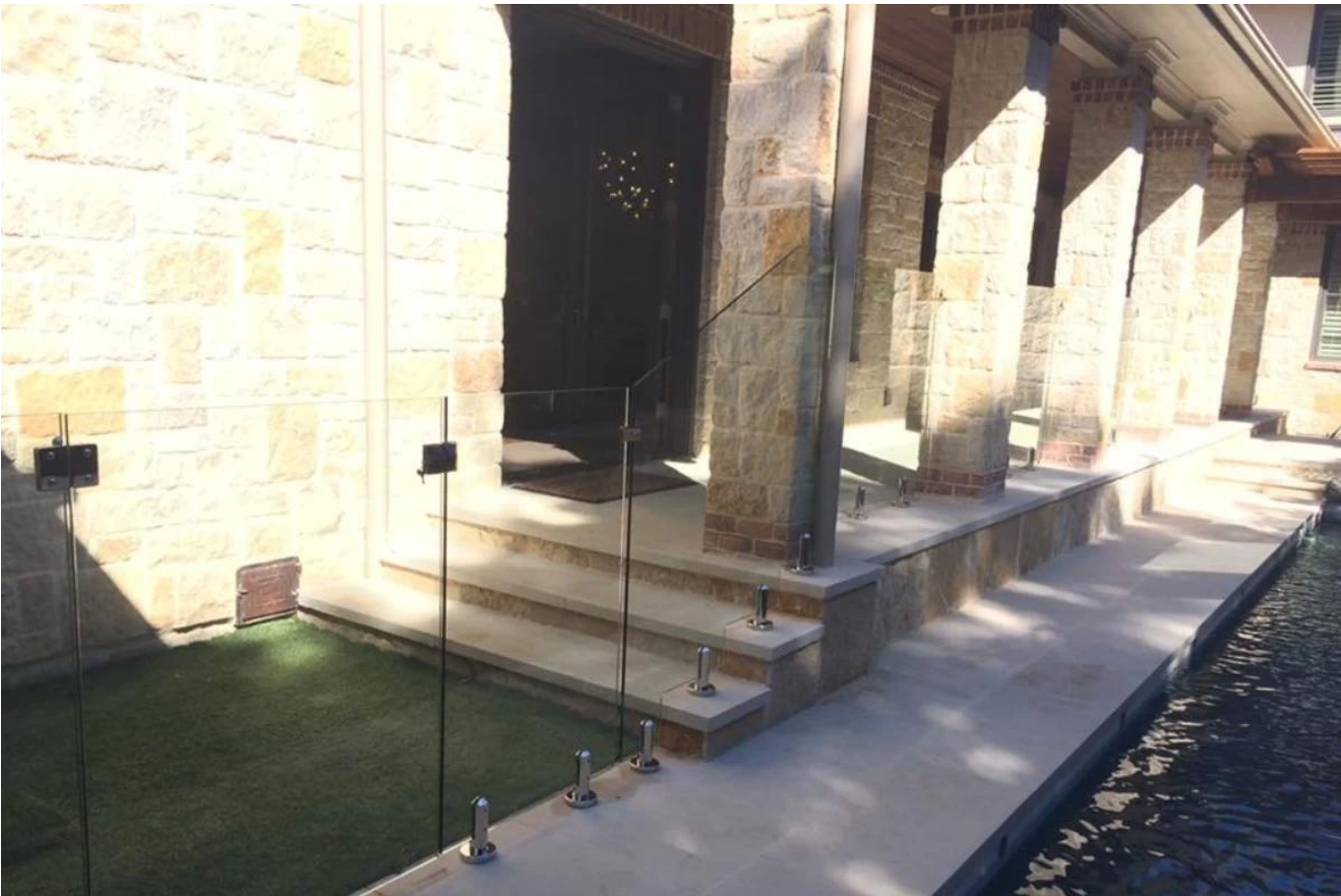
*Glass spigot*

## 8. Project Photos of Frameless Glass Railings with glass spigots -

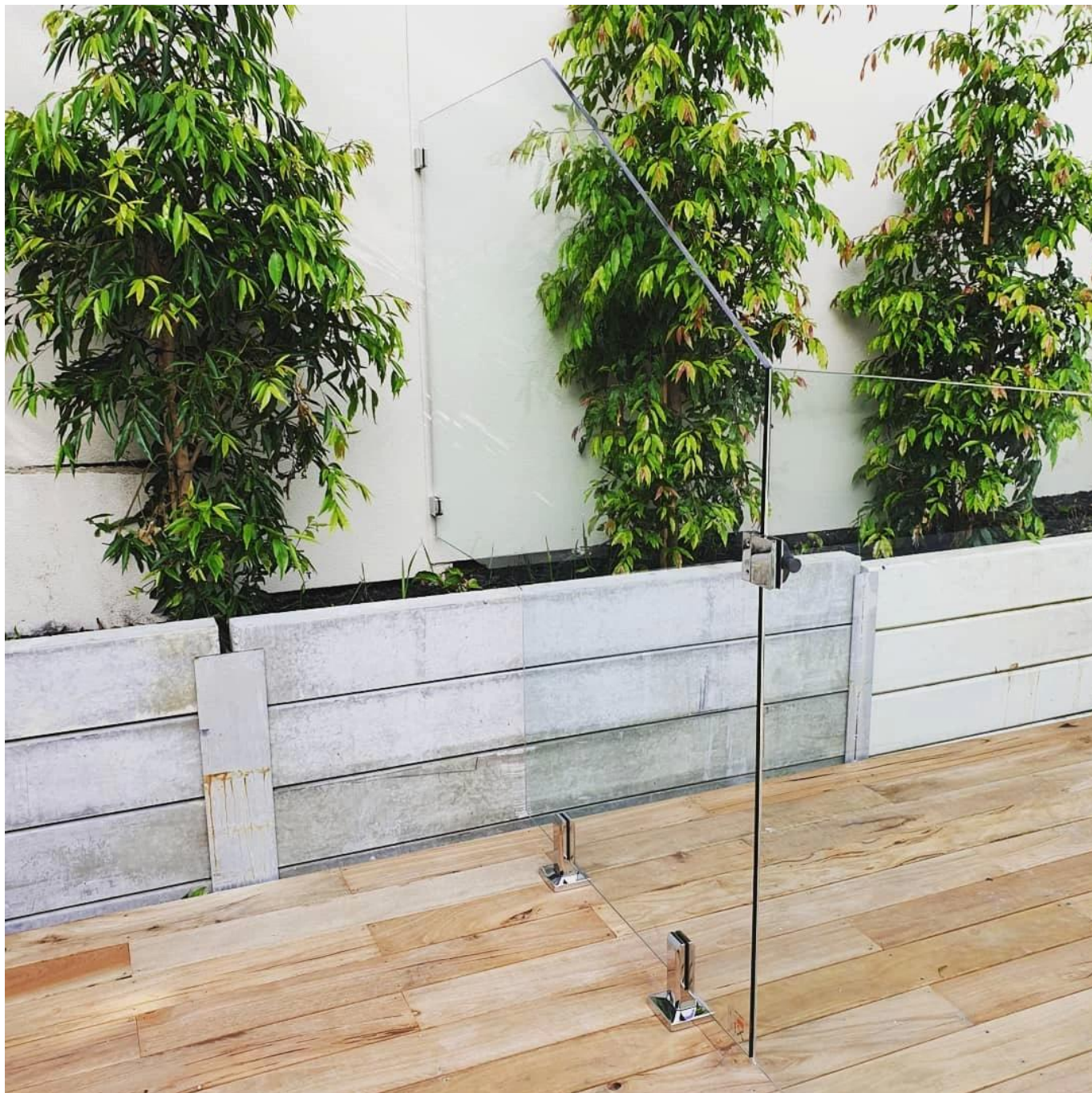










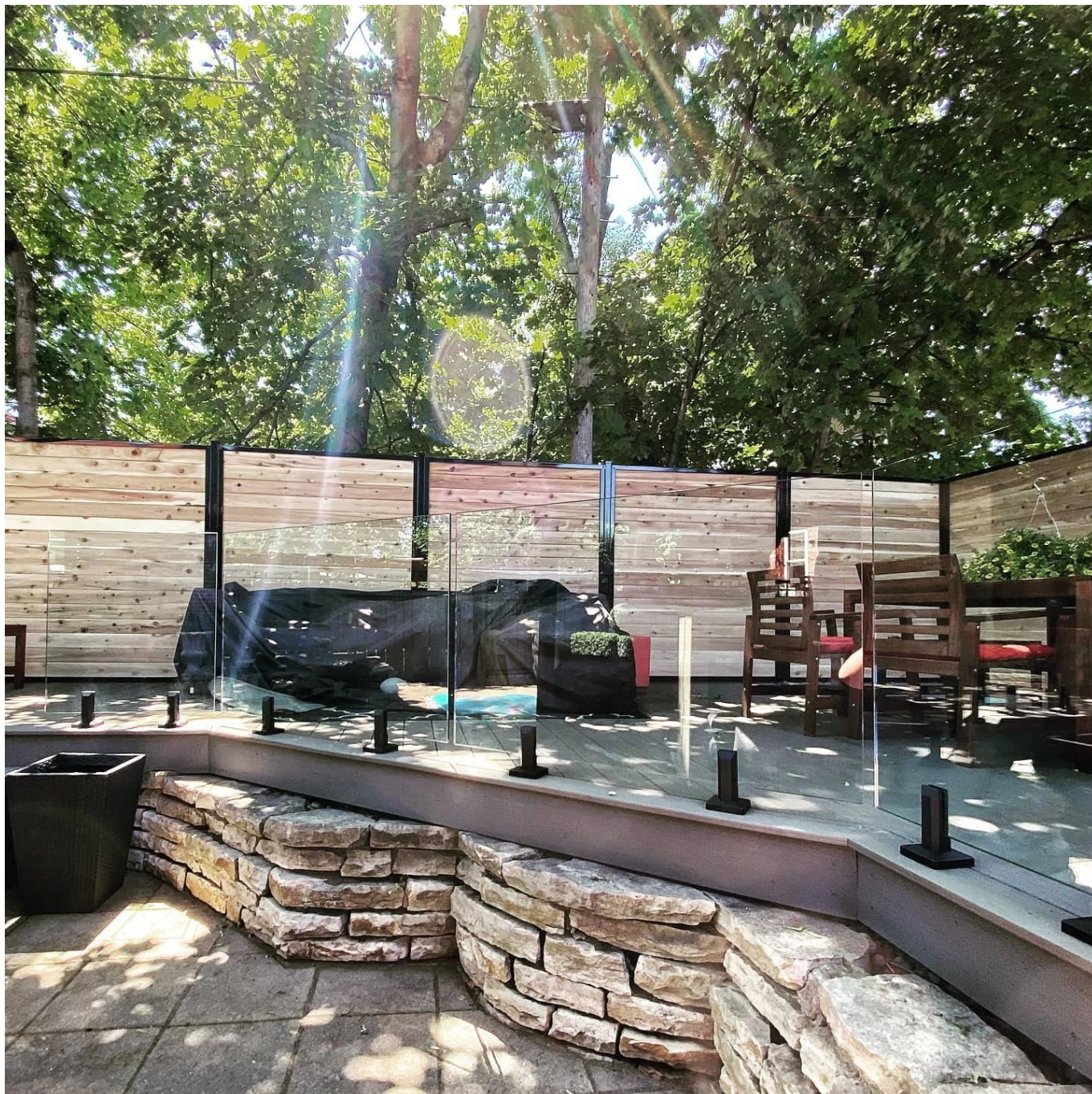












**We also have glass hinge & magnetic latches & glass clamps & tempered glass to go with the whole frameless glass railing system .**

Feel free to contact us now to get quotes !

**Shenzhen Launch Co., Ltd**

*Verified by SGS , Report No. 19536352\_P+T*

Office add:

B5-003, 5/F-Block 3, Yilida Building, No. 1092 Nanshan Road, Nanshan District, Shenzhen , China , postal code 518054

Tel: 86-755-86037559 Fax: 86-755-86372611

MOB (WhatsApp, Wechat, Viber) +86 135 9027 3543

Contact : Celia Chen