

Stainless Steel Large Round Glass Clamp for Flat Surface
Specification :

- Material: Stainless steel 304/316
- Round shape U shape
- For glass thickness: 10-12mm;
- Finish: Satin or mirror polished.
- Model No.: CB-90



Other kinds of glass clamps

Specifications of all glass clamps in our company

Drawing	Picture	Ref.	A	B	C	D	E
		G108	55	55	25	11	0
		G108R	58	55	30	11	R25.4
		G101	51	41	25	11	0
		G101R	55	41	25	11	R21.5/R25.4
		G102	44	44	25	11	0
		G102R	48	44	25	11	R21.5/R25.4
		G103	50	40	22	8	0
		G104	50	40	26	12	0
		G105	54	45	28	14	0
		G107	63	45	28	14	0
		G103R	52	40	22	8	R21.5
		G104R	52	40	26	12	R21.5
		G105R	58	45	28	14	R21.5/R25.4
		G107R	66	45	28	14	R21.5/R25.4
		G106	50	40	25	12	0
		G106R	52	40	25	12	R21.5/R25.4



G102



G103/G104



G105



G108R



PV-90



CB-180



BC-60

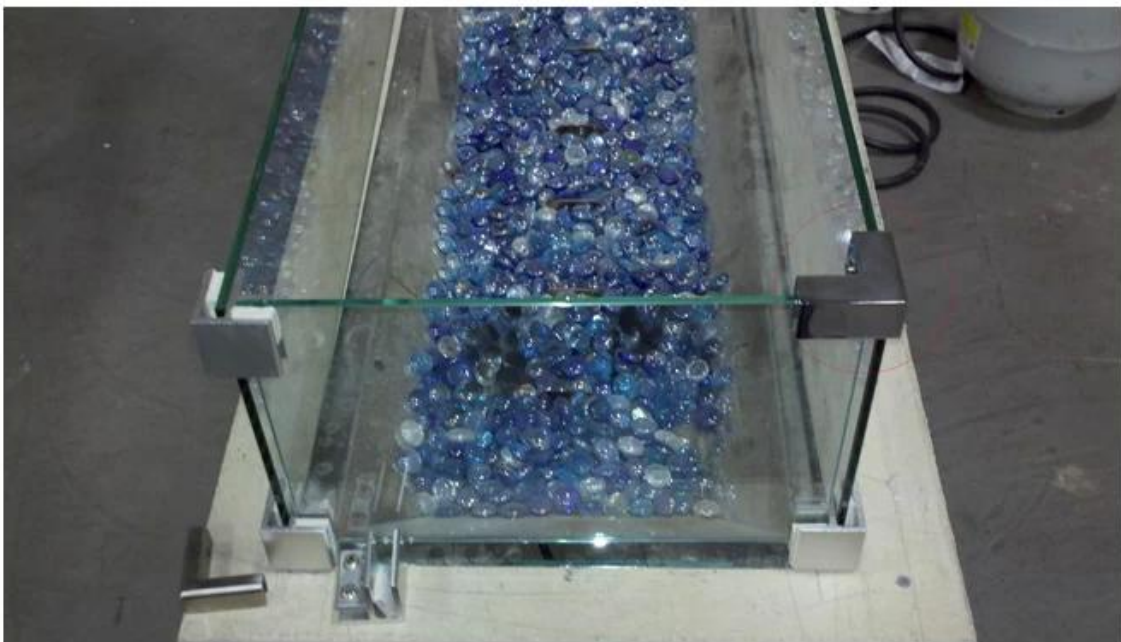


BC-80x35



CB-90

Application:



Company infoes:

PRODUCTION PROCESS



Casting



CNC lathe



CNC Milling



Stamping



Drilling & Tapping



Polishing



Thanks for your visit, Any interest, please contact with us freely :

Email: sales05@launch-china.cn .