

Stainless steel glass standoff, offset glass balustrade hardware for floating staircase

The standoff can be mounted to both wooden and concrete floor.

Application places: outdoor glass railing and indoor glass railing system

Application areas:

balcony glass railing

staircase glass railing design

terrace glass railing design etc.

Dia 50mm Glass Standoff in Satin Finish:



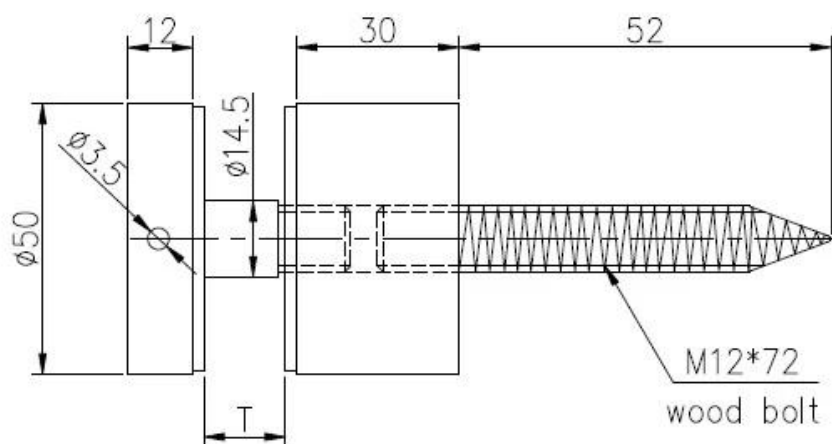
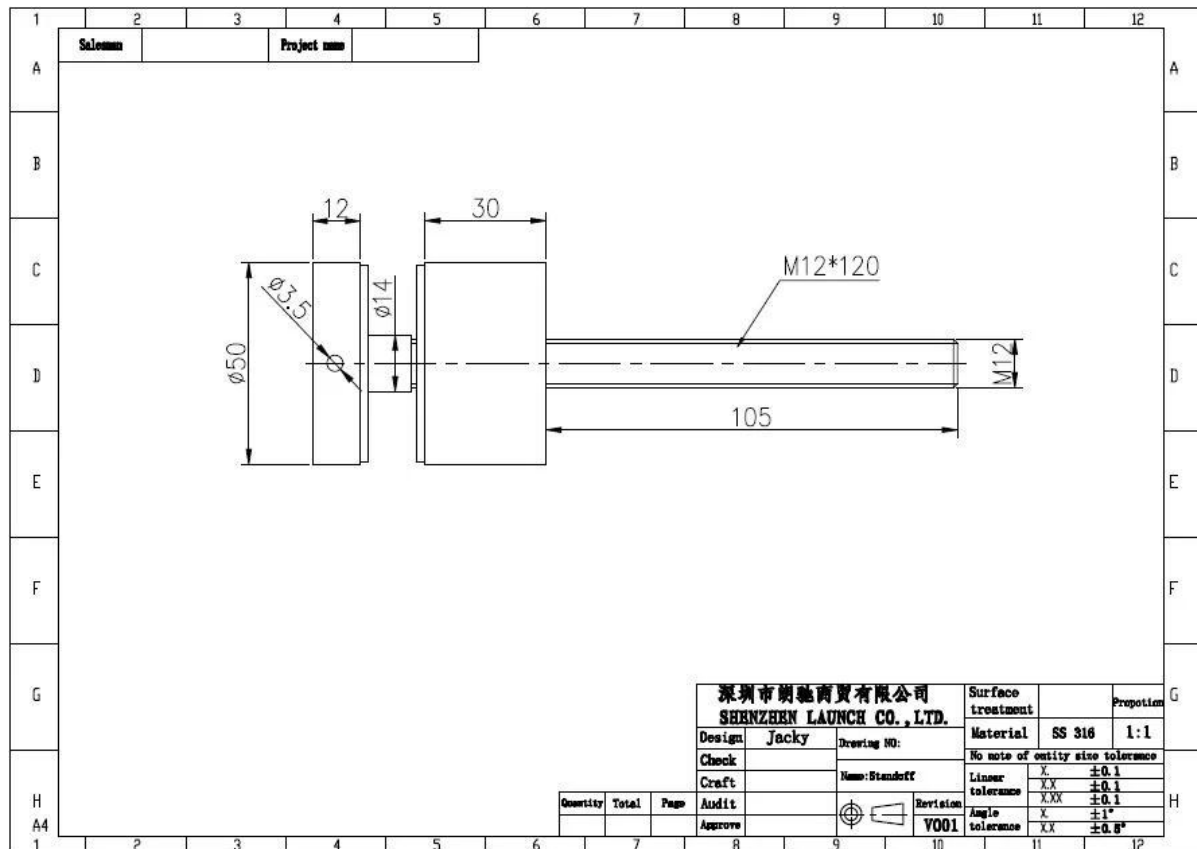
Dia 50mm Glass Standoff in Mirror Finish:



With concrete bolt & wood screw:



Technical drawing:



深圳市朗驰商贸有限公司				Surface treatment	Propotion
SHENZHEN LAUNCH CO., LTD.				Material	1:1
Design	Jacky	Drawing NO: SF-68		No note of entity size tolerance	
Check		Name: Standoff		Linear tolerance	X ±0.1
Craft		Revision		XX	±0.1
Audit		Revision		XXX	±0.1
Approve		Revision		X	±1°
		Revision		XX	±0.5°

Project Photos:

outdoor and indoor glass standoff, frameless standoff glass railing design, stainless steel glass standoff bracket, glass standoff pin







[Stainless steel glass standoff for frameless glass balustrade](#)



[stainless steel standoff, bracket for glass panels, railing design](#)



Contact us now for more information!

Email: sales03@launch-china.cn

HP/WhatsApp/WeChat: +8613686807796