

Shenzhen Launch Co., Ltd specialized in developing and manufacturing High Grade Metal Building Material since 2004, we have our own factory located in Dongguan. Below I would like to introduce more details about the side mounted glass spigot for your review.

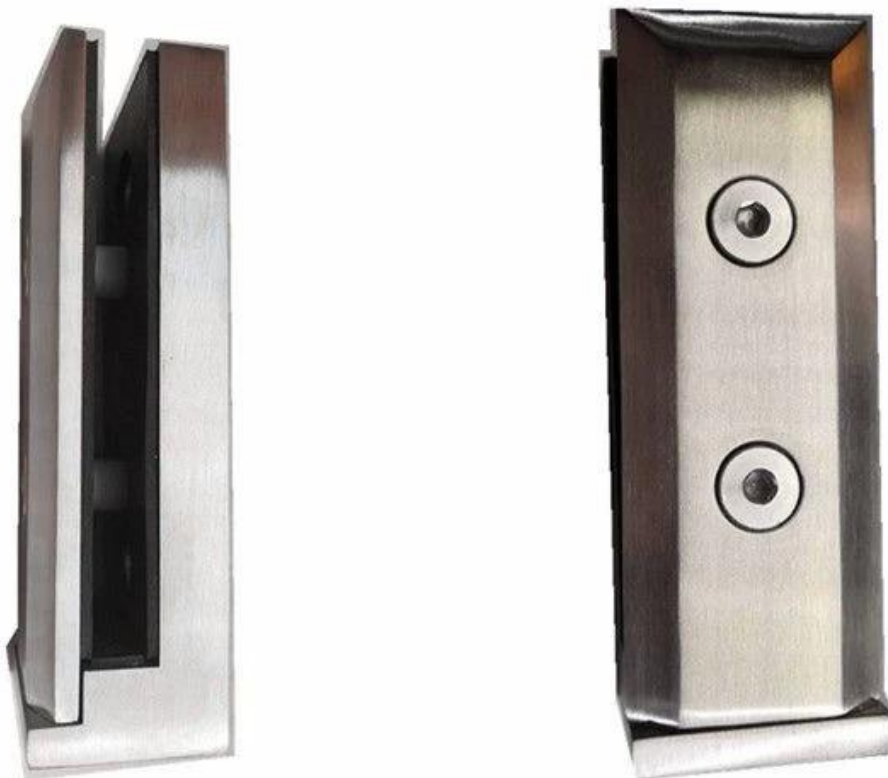
### Product Specs

Product name	Side mounted glass spigot
Material	304SS/316SS/316LSS/Duplex 2205
Surface finish	Mirror/Satin/Matt black
For glass thickness	10-13.52mm
Application	Swimming pool fence, balcony fence
Other vertical mount types	SBM/SCM RBM/RCM

### Product Show



## Side Mounted Glass Spigot





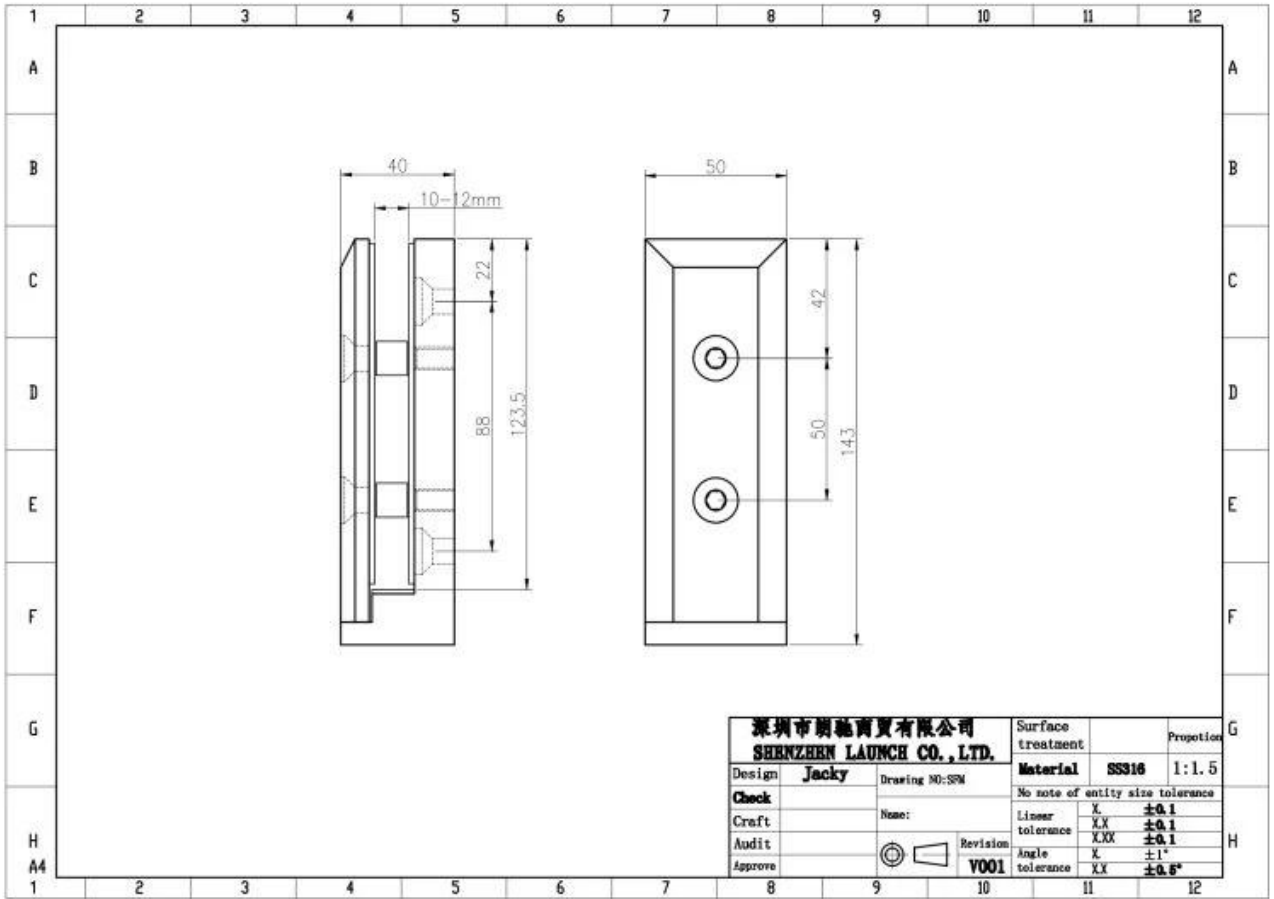
**Exploded view**



**Mass Production**



**Technical Drawing**



## How To Assemble



With the front face plate removed, level or align the Clamps to your design plan, taking into account the spacing recommendations and weight limitations shown on the back of this page. Be sure to secure the Clamps to an engineered and approved substrate with appropriate fasteners. You can fabricate the glass ahead of time, however, we recommend calculating hole locations after the Clamps are installed to account for any clamp movement.



Check the layout of the Clamps for alignment, then do a layout for fabricating holes in the glass to meet the installed measurements and spacing between glass panels.



Place the gaskets against the base fitting, both back and bottom lip, then set the glass panel on the base fitting. Next place the front gasket against the glass panel along with the front plate and secure to the base fitting by tightening the two screws. Don't tighten all the way, leave enough play to adjust the glass panel.



After you have achieved the proper alignment tightly secure the front plate screws to finish the installation. Clean the glass and view from a distance to determine if everything matches up and looks good. Adjust if necessary.

## Project Photo







**Other types vertical mounted glass spigot**

**Mirror surface finish**





**Satin surface finish**



**Matt black surface finish**



Please feel free to contact when you have inquiry for them.

Attn: Frank Fang

Phone: +8615906261741

Email: [sales02@launch-china.cn](mailto:sales02@launch-china.cn)