

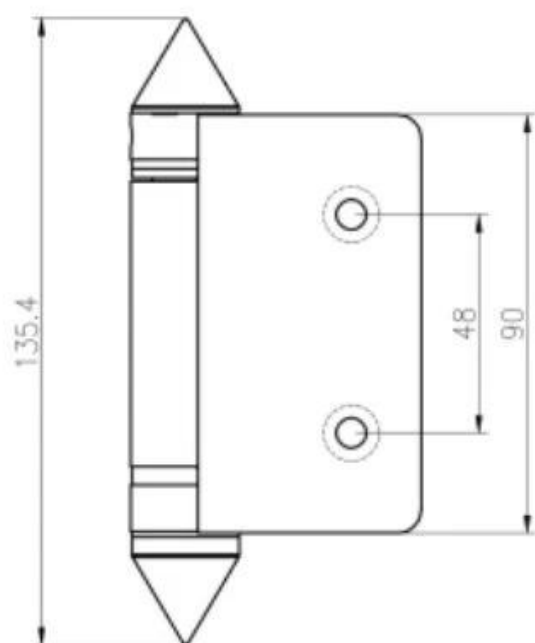
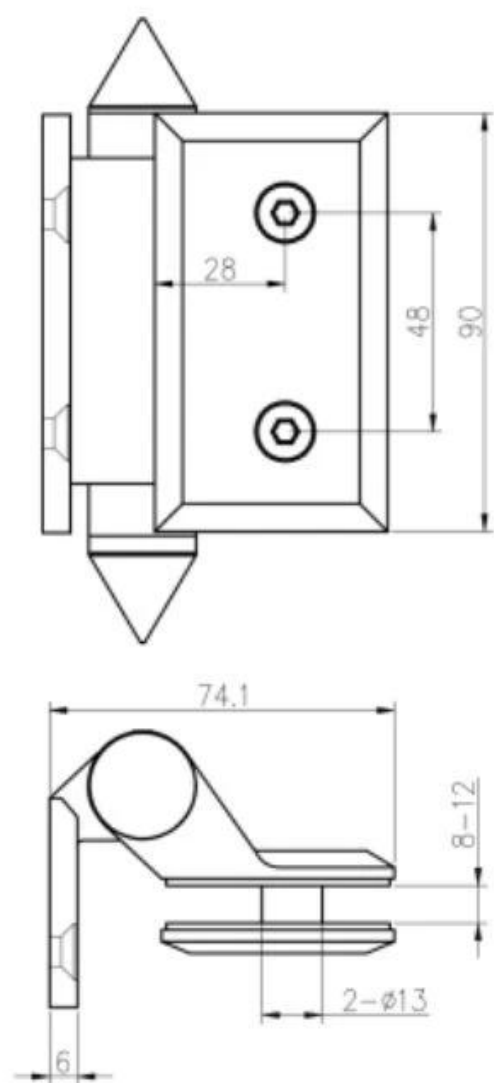
Shenzhen Launch can produce spring loaded glass hinge for swimming pool glass fecing, one p
air glass hinge can carry 30kg glass gate, gate wall thickness prefers to 8-12mm. Here introduc
ed below several types for your review. Welcome your inquiries.

Product Show

Glass to Glass type

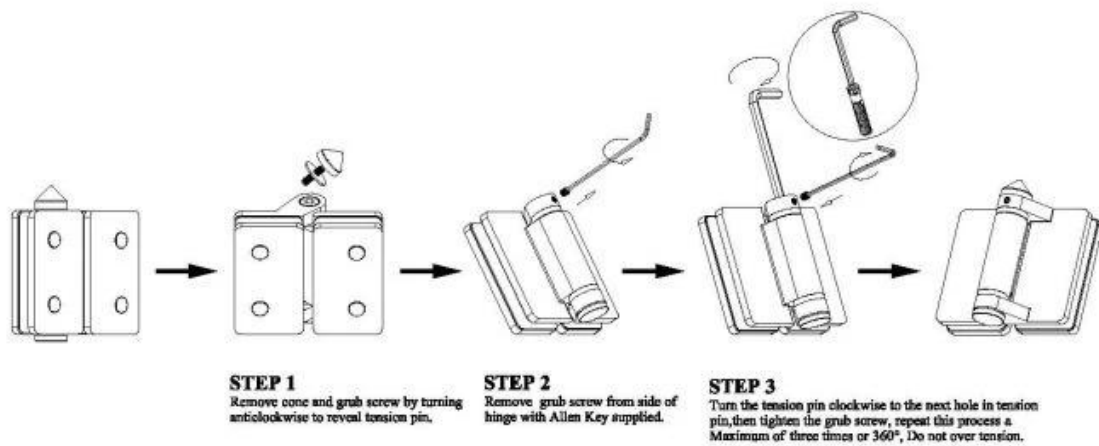
Model No.: [G-G](#)





G-W

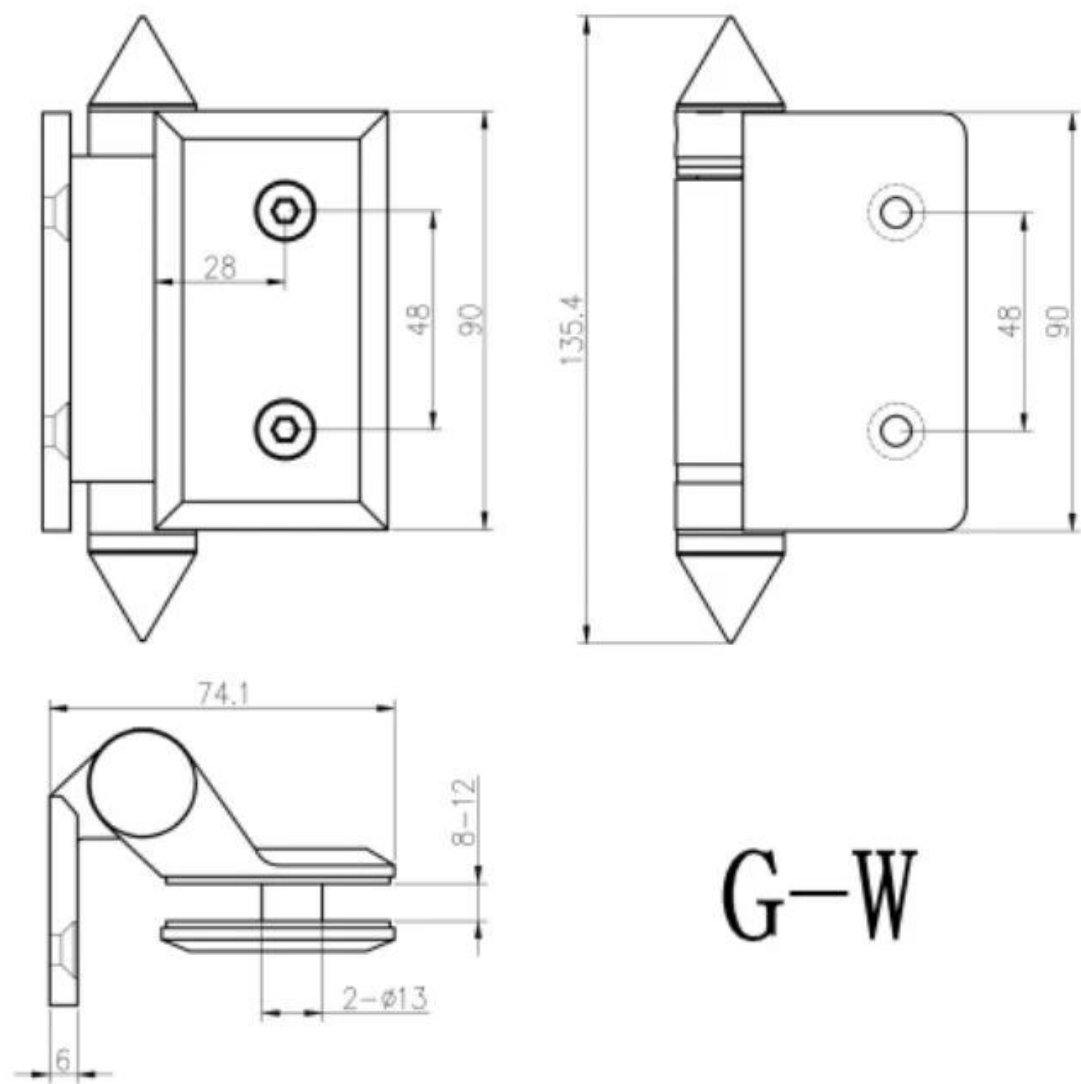
Instructions for adjusting tension on Glass to Glass hinge



Glass to Wall type

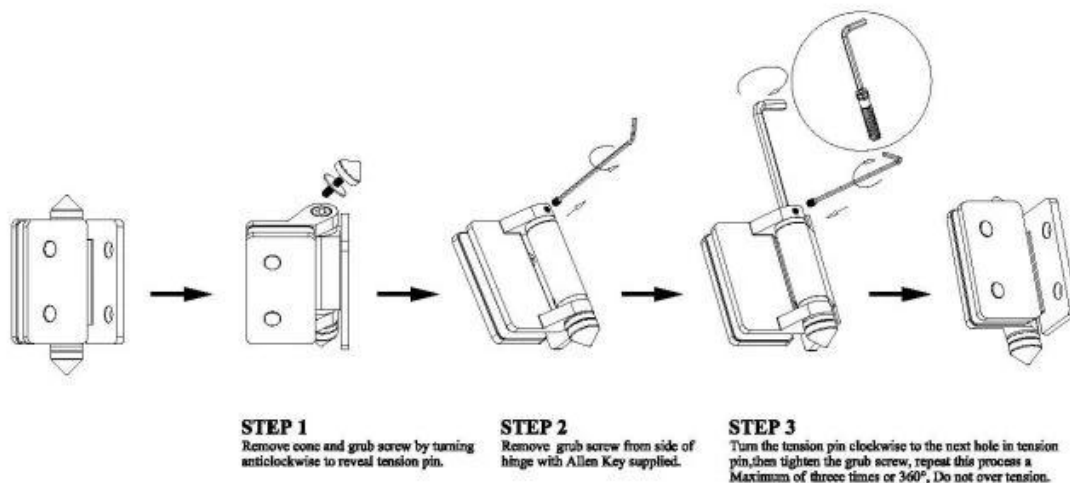
Model No.: G-W





G-W

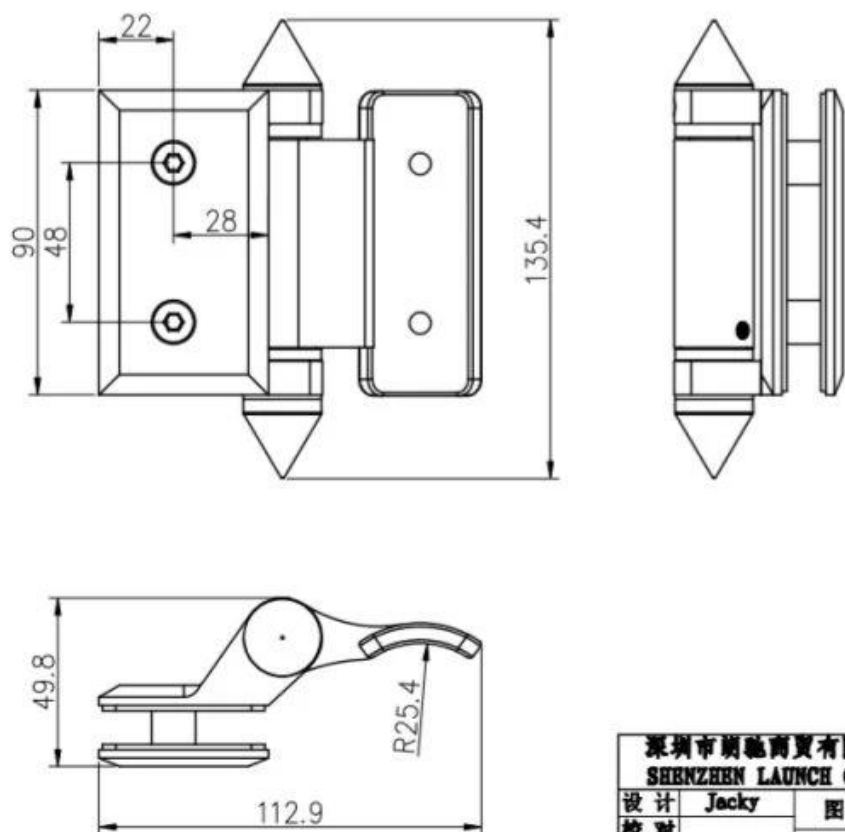
Instructions for adjusting tension on Glass to Wall hinge



Glass to Round type

Model No.: G-R

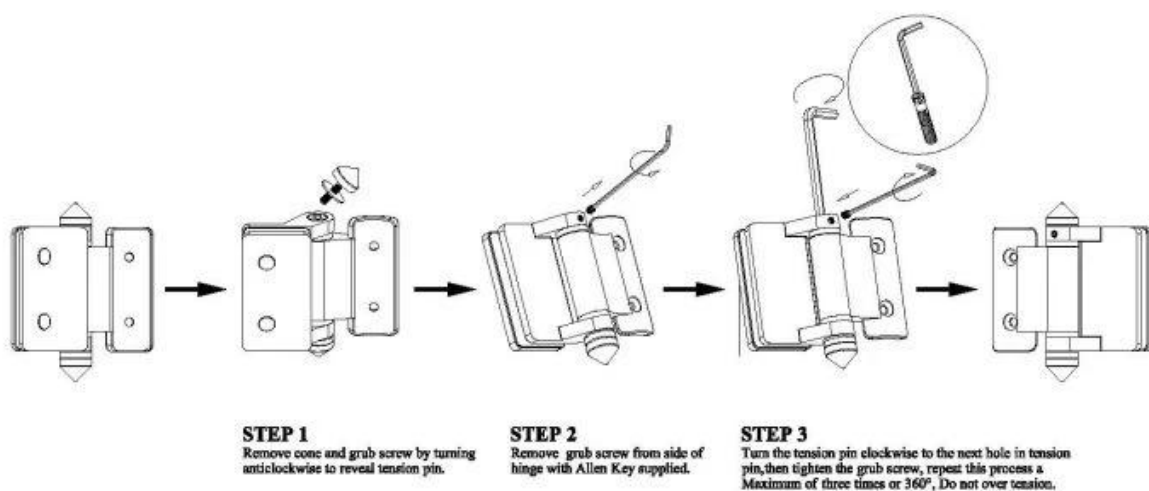




深圳市朗驰商贸有限公司 SHENZHEN LAUNCH CO., LTD.		表面处理		比例
设计	Jacky	材料		1:1.5
校对	图号:G-R	未注实体尺寸公差		
工艺		线性公差	X	±0.1
审核			XX	±0.1
批准			XXX	±0.1
	版次	角度公差	X	±1°
	V001		XX	±0.5°

KEBIL 科比奥
www.launch-china.cn

Instructions for adjusting tension on Glass to Round post hinge



Mass Production





Packing Picturer





Application Picturer





Should you have any interests, please feel free to contact me.

Frank Fang

Phone/Wechat/Whatsapp: +8615906261741

Email: sales02@launch-china.cn