

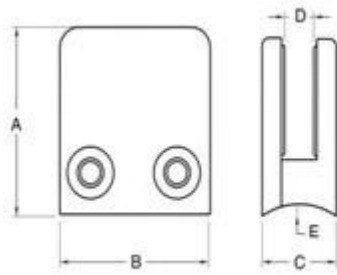
Product name: glass clamp, stainless steel glass clamp,
D clamp , glass clip , glass railing clamp, glass holder clamp
Country of Origin: China
Material: Stainless steel 316 /316L
Finish:satin / mirror
Fabrication process: casting --modifying--drilling/tapping --polishing--packing
Application: to be installed on square / round railing post , wall , floor to hold the glass
Port: Shenzhen, China
Trade terms available: FOB , CIF , C&F , CFR , EX-WORKS
Payment terms available:T/T ; L/C at sight ; Western Union , Alibaba Escrow

Product Images:





This type of glass clamp can be fixed to round post and square post. Below are the size of the clamp:



Item No.	A	B	C	D	E
G101	51	41	25	11	0
G101R	55	41	25	11	R-21.5
G102	44	44	25	11	0
G102R	48	44	25	11	R-21.5
Suitable for 8-10mm glass					



G102R



G102

the clamp usually used with stainless steel post to hold glass panels, for balcony railing, terrace railing, staircase. Suitable for both indoor and out door.





More types of glass clamps are available:













Contact us immediately for more information!

Email: sales03@launch-china.cn

HP/WhatsApp/WeChat: +8613686807796