

**Swimming Pool Fence Glass to Post
Hinge For 8mm 10mm 12mm thickness glass gate spring loaded type .**

Specifications for Swimming Pool Fence Glass to Post Hinge-

Model No.	G-P
Type	Glass to post hinge
Material	316 stainless steel
Finish	satin
Glass thickness	8-12mm
Max. door leaf weight	30kg per pair of hinge

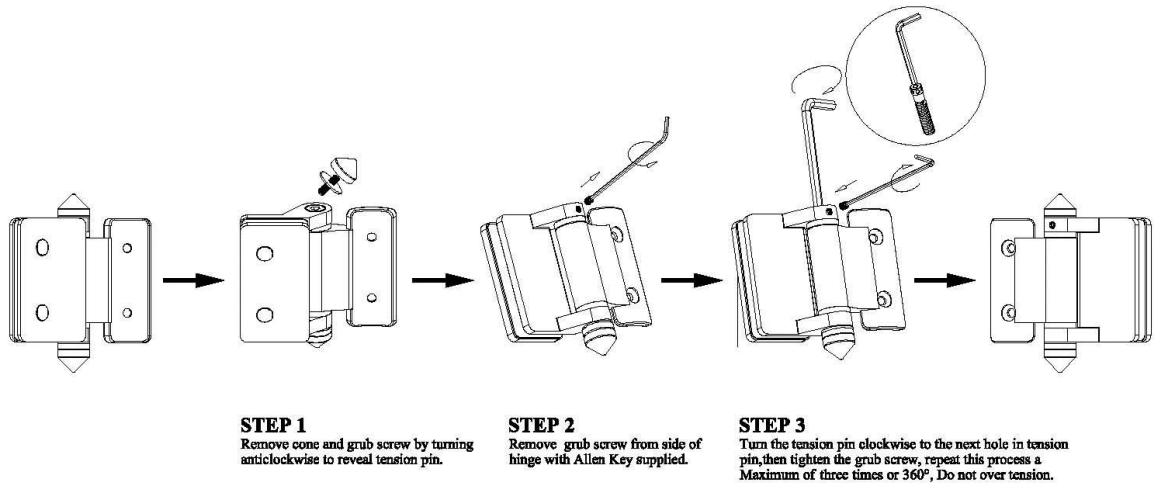
Glass to post hinge photo -



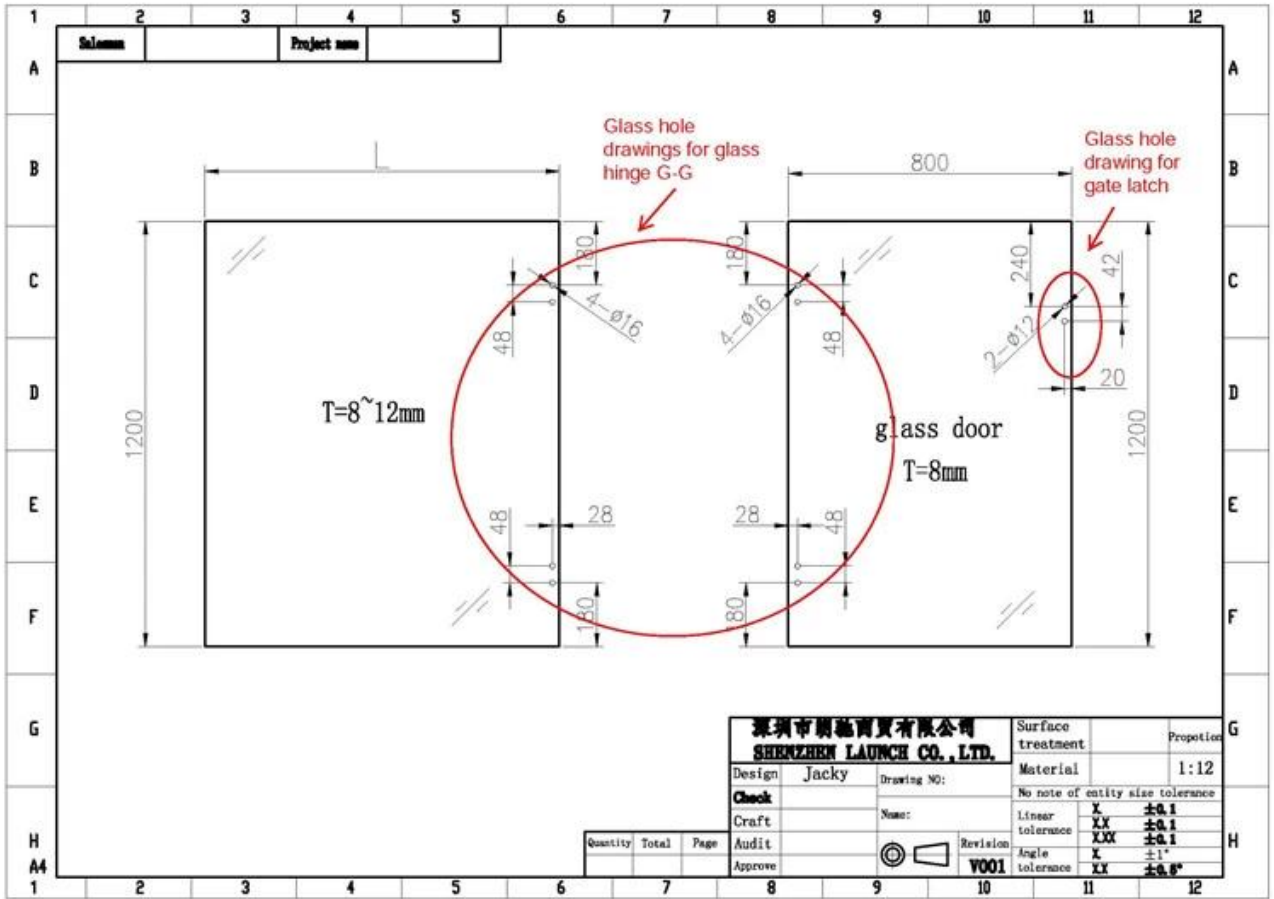
G-R2



Instructions for adjusting tension on Glass to Round post hinge



Hole drawing for Swimming Pool Fence Glass to Post Hinge -



Swimming pool fence with Swimming Pool Fence Glass to Post Hinge project photos -







