

Glass clamp is used to fasten the glass to balustrade post, or connect glass together, so it's very popular in glass railing systems. As different customer have different requirement about the clamp color to make their home more special, thus we make different color like Silver, Black, Wooden, White, etc. for our clients.

Product Show

Our standard color, Silver Glass Clamp





Black Glass Clamp

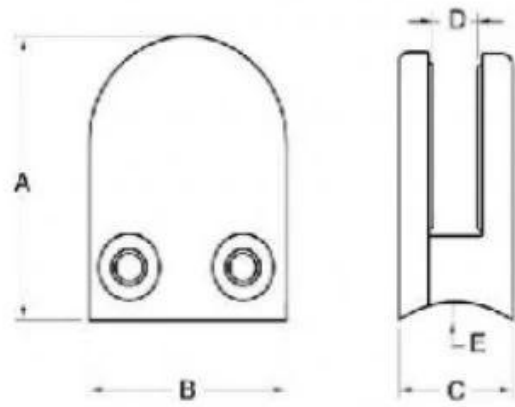




Wooden Glass Clamp



Technical Drawing



Model No.	A	B	C	D	E
G103	50	40	22	8	0
G103R	52	40	22	8	R-21.5

Other Types of Glass Clamp



G102



G103/G104



G105



G108R



PV-90



CB-180



BC-60

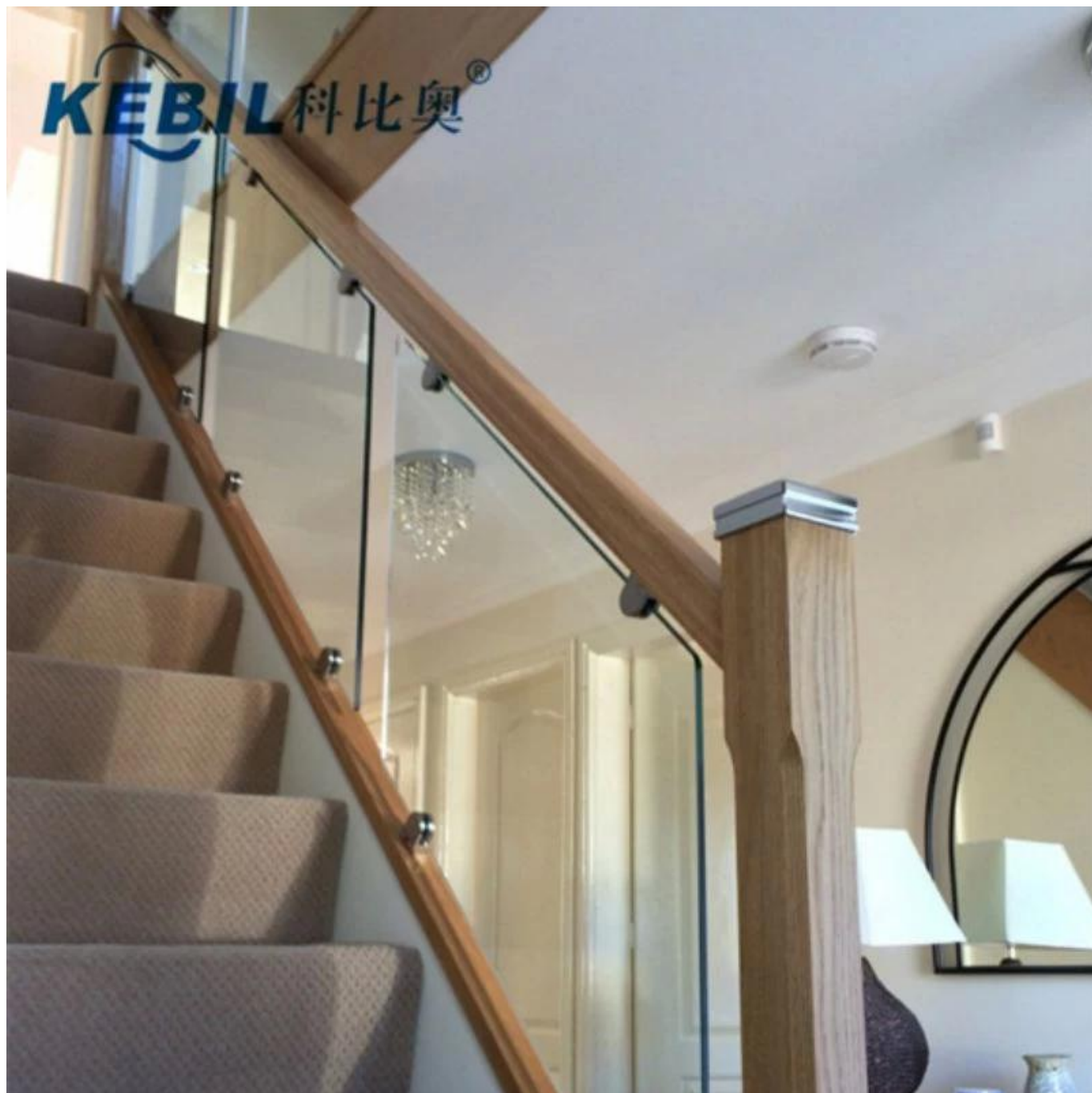


BC-80x35



CB-90

Project Picture





Should you have any inquiry, please feel free to contact me.

Frank Fang

Phone/WhatsApp/Wechat: +8615906261741, Skype: launch-02

Email: sales02@launch-china.cn