

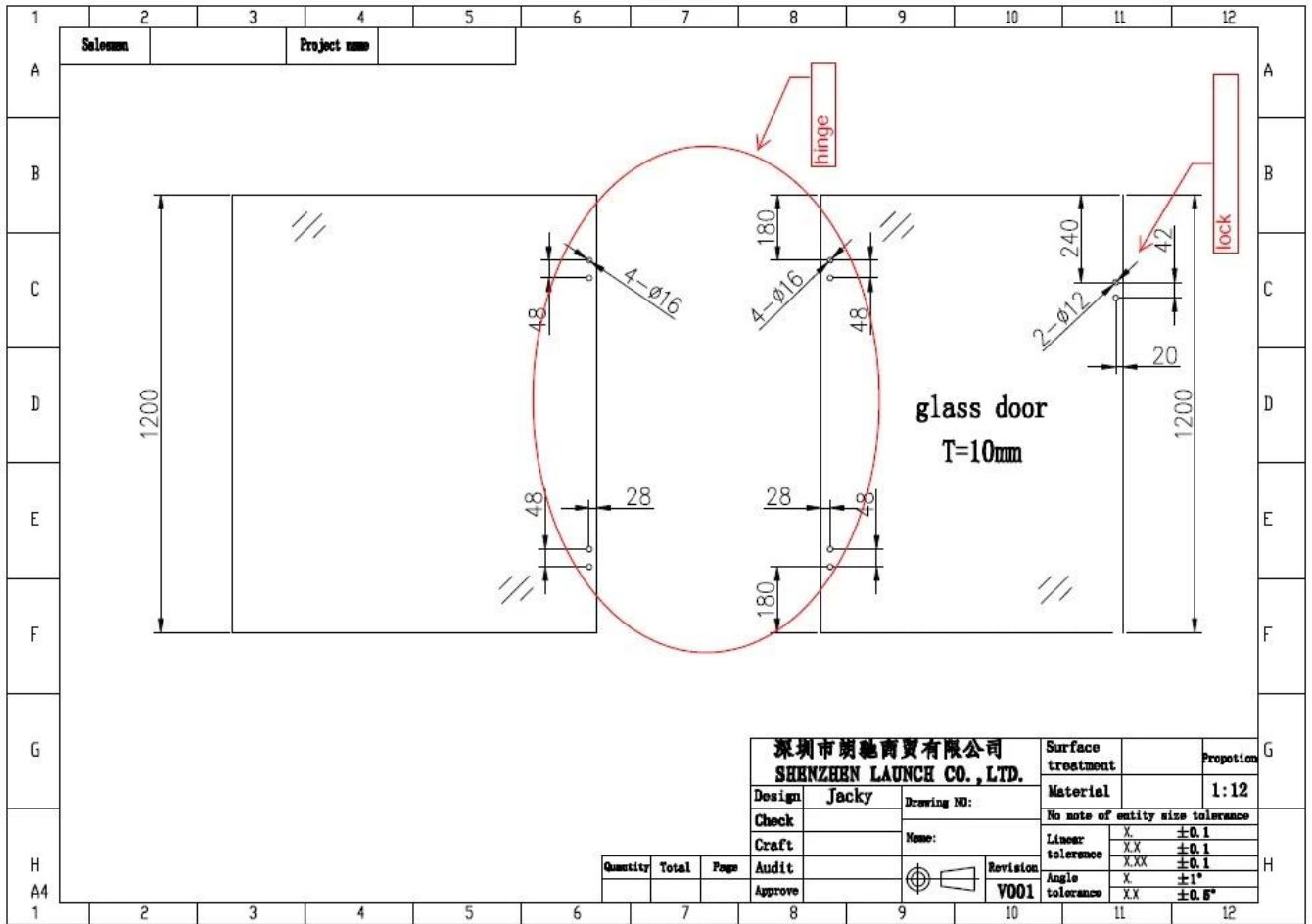
Wall to Glass Hinge made by precision casting for 8mm to 13.52mm thickness glass doors . The glass hinge is with M6*16mm screws .

Features-

- Model : G-W
- Type : Glass to wall hinge
- Material : stainless steel 316
- Finish : satin,mirror , matte black
- Load capacity : 35kg per pair
- Glass thickness : 8-13.52mm
- need glass holes as per drawing
- Glass spigot , glass latch , glass clamps also available



Glass hole drawing required for glass gates-



深圳市朗馳商貿有限公司 SHENZHEN LAUNCH CO., LTD.		Surface treatment	Proportion
Design	Jacky	Material	1:12
Check		No note of entity size tolerance	
Craft		Linear tolerance	X ±0.1
Audit		XX ±0.1	
Approve		XXX ±0.1	
		Angle tolerance	X ±1°
		XX ±0.5°	

Quantity	Total	Page

Project photos of swimming pool fence with spring glass hinges-

