

Wholesale 316 Stainless Steel Standoff Glass Railings for Commercial and Residential Projects

| | |
|--------------------------|---|
| First name | Wholesale 316 Stainless Steel Standoff Glass Railings for Commercial and Residential Projects |
| Model number: | SF-50 |
| Diameter | 50 mm |
| Productive process | CNC machining |
| Material | Stainless steel 304/316. |
| All done | Satin / mirror / black |
| Installation | mounted glass wall |
| For thicknesses of glass | 10-19mm |
| MOQ. | 10 pcs per item |

Constructed from high-quality stainless steel 316 (SS316), this railing system is known for its exceptional durability and corrosion resistance, making it suitable for a wide range of environments, including marine applications.

This type of railing features glass panels that are securely fixed to the structure using standoffs or spigots. The glass used is typically 12mm, 15mm, or 19mm thick, providing both safety and clarity.

The size of the glass panels can be customized according to the client's needs, with common dimensions being 1000mm x 1500mm. The railing system is available in various heights and widths, which can be tailored to meet the specific requirements of the project.











The Glass railing It is a security barrier that is becoming increasingly popular.

It is primarily a protective railing that protects its users from falling.

A **point fastening** Glass railing It has various applications:

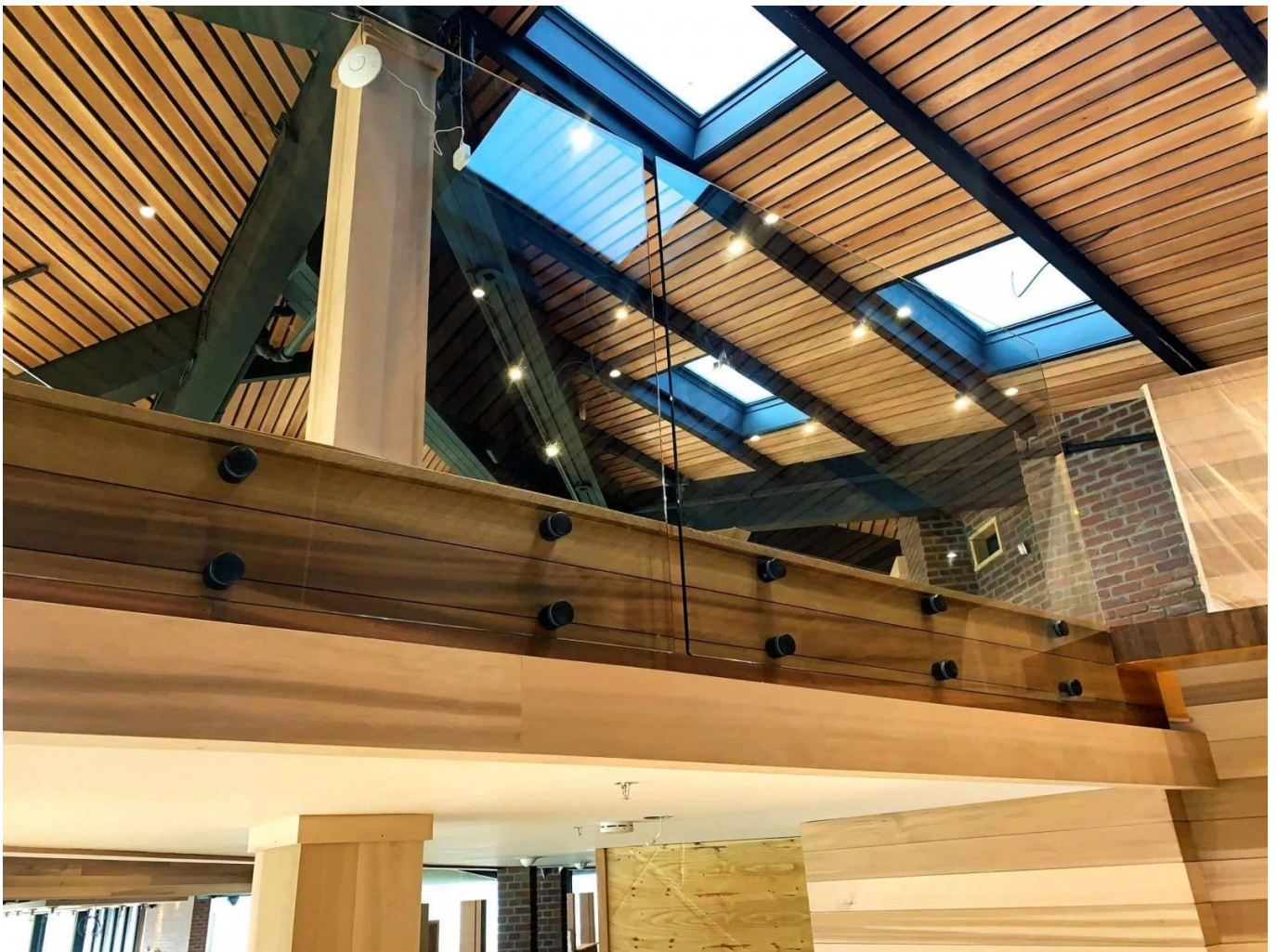
- glass safety barrier for the pool and patio

- Glass balustrade Balcony

- Glass scale Rake

- safety guardrail for landing, or loft.





In addition to our [Glass railing on profiles'](#) range, Kebil also offers a series of glass railings adapted to their needs: Point, fastening Clamp-fixing, fixing side profile, framed on each side, messages, etc ...



Do not hesitate to contact us if you need more information:

Eve

Email: sales03@launch-china.cn.

HP / WhatsApp: +8613686807796