

china supplier factory prices glass balustrade fittings stainless steel top rail

1.glass balustrade fittings stainless steel top rail description.

Material: stainless steel 304/316/316L

Finish: Brushed or Mirror polished

For glass thickness : 8-13.52mm thickness

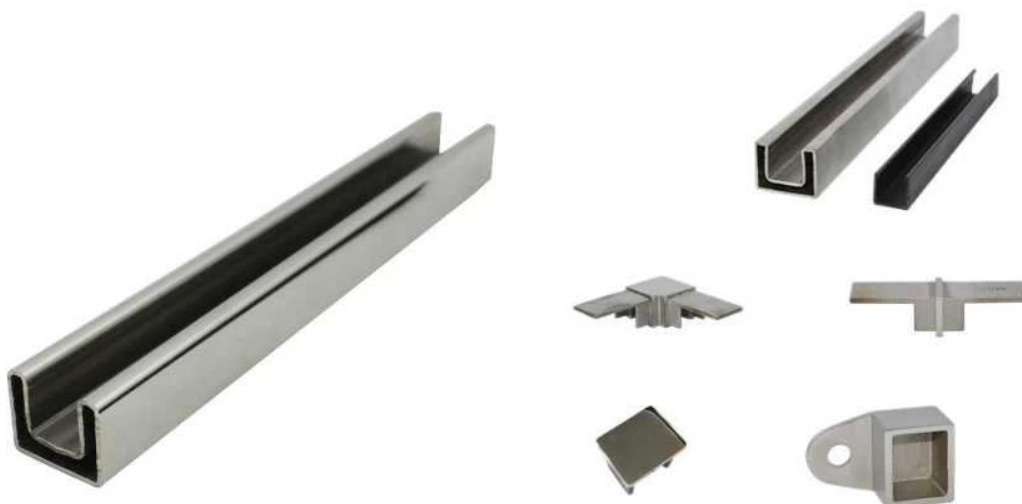
Dimension: Square shape, 25*20mm, groove 14*14mm,

5.8 meter per length , or as per your requirement cut into sections

2. glass balustrade fittings stainless steel top rail and fittings details:

NEW ORDER OF SLOT HANDRAIL IN AUSTRALIA

Slot handrail and fittings



Square slot handrail series

glass balustrade fittings stainless steel top rail connectors photos,

90 degree Corner connector



180 degree middle connector



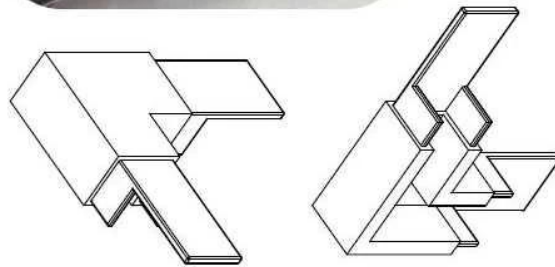
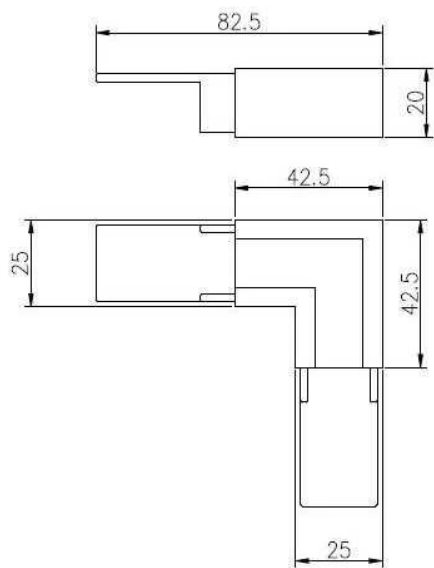
End Cap



Wall Bracket

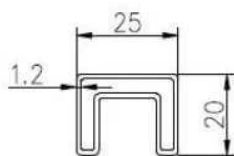


90 degree connector drawings

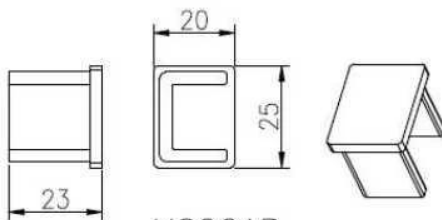


MSQC90

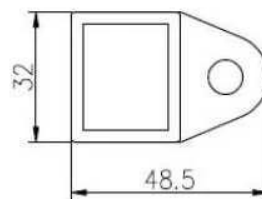
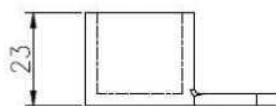
Slot tube handrail + end cap + wall bracket connector drawings



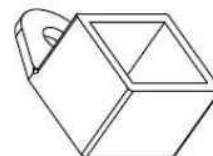
25*20 tube



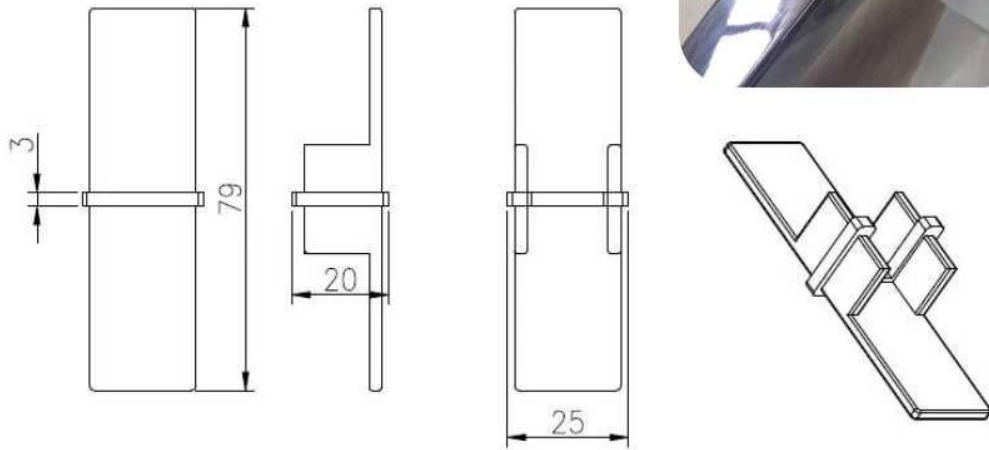
MSQCAP



MSQCW



180 degree connector drawings



MSQC180

3. glass balustrade fittings stainless steel top rail project:



Outdoor balcony Project



Outdoor deck Project



4.glass balustrade fittings stainless steel top rail package,

Woven bag / Safe Cardboard tube packaging



Thanks for your visit, Any interested or needs, please contact with me freely :

Joey Lan

Shenzhen Launch Co., Ltd

www.launch-china.com www.launch-china.en.alibaba.com www.chinabalustrade.com

Email: sales02@launch-china.cn .

Skype: launch-02 . Office: 86-755-86037559 .