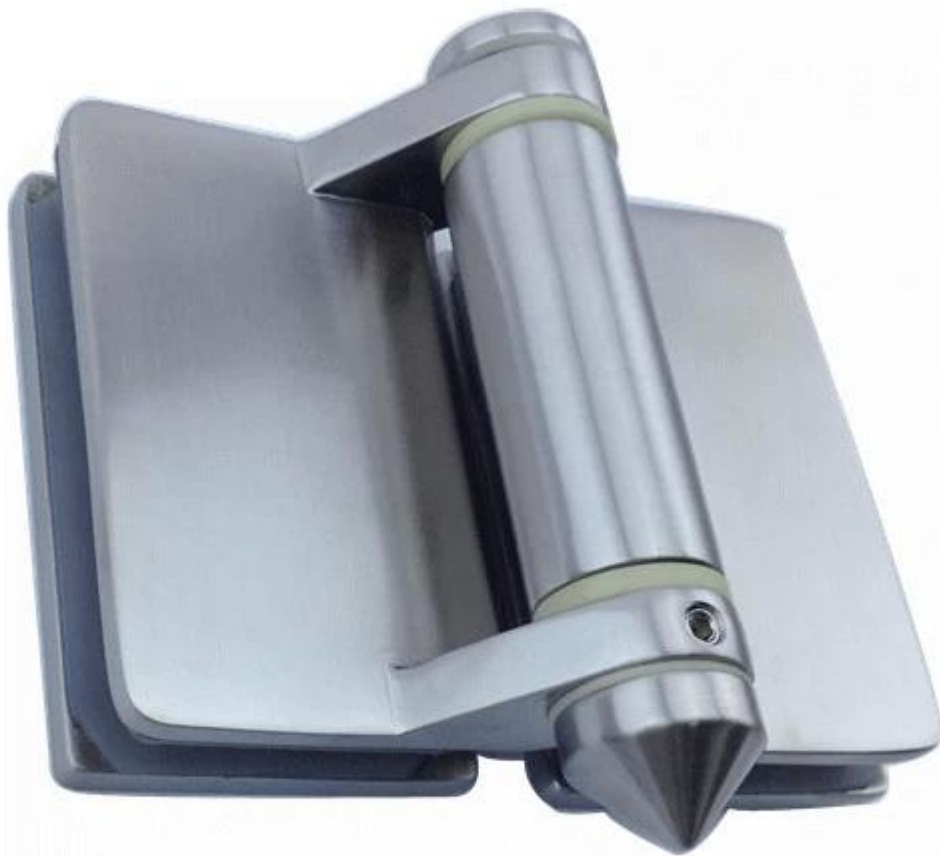


## china supplier glass gate 316 stainless steel hinges

### Description:

- 1.Solid stainless steel material
- 2.Available in satin and mirror polished
- 3.Wall / square post to glass model G-W2
- 4.180 degree glass to glass model G-G2
- 5.Round post to glass model G-R2
- 6.Maximum door leaf weight: 50kg
- 7.Suitable for 8-10mm thickness glass

[Model No. G-G2, glass to glass hinge.](#)



**G-G2**

[Model No. G-W2, glass to square post / wall hinge.](#)



**G-W 2**

[Model No. G-R2, glass to square post / wall hinge.](#)



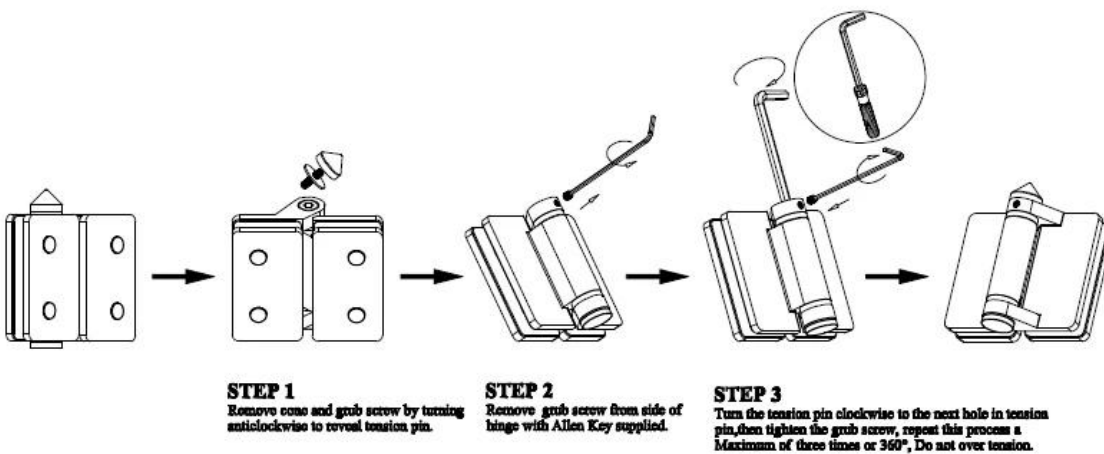
**G-R2**

[china supplier glass gate 316 stainless steel hinges installed.](#)



[china supplier glass gate 316 stainless steel hinges install instruction.](#)

### Instructions for adjusting tension on Glass to Glass hinge



Thanks for your visit, Any interested or needs, please contact with me freely :

Joey Lan

**Shenzhen Launch Co., Ltd**

[www.launch-china.com](http://www.launch-china.com) [www.chinabalustrade.com](http://www.chinabalustrade.com)

Email: [sales02@launch-china.cn](mailto:sales02@launch-china.cn) .

Skype: launch-02 . Office: 86-755-86037559 .

Add: B5-003, 5/F-Block 3, Yilida Building, No.1092 Nanshan Road, Nanshan District, Shenzhen, china. Postal code 518054.