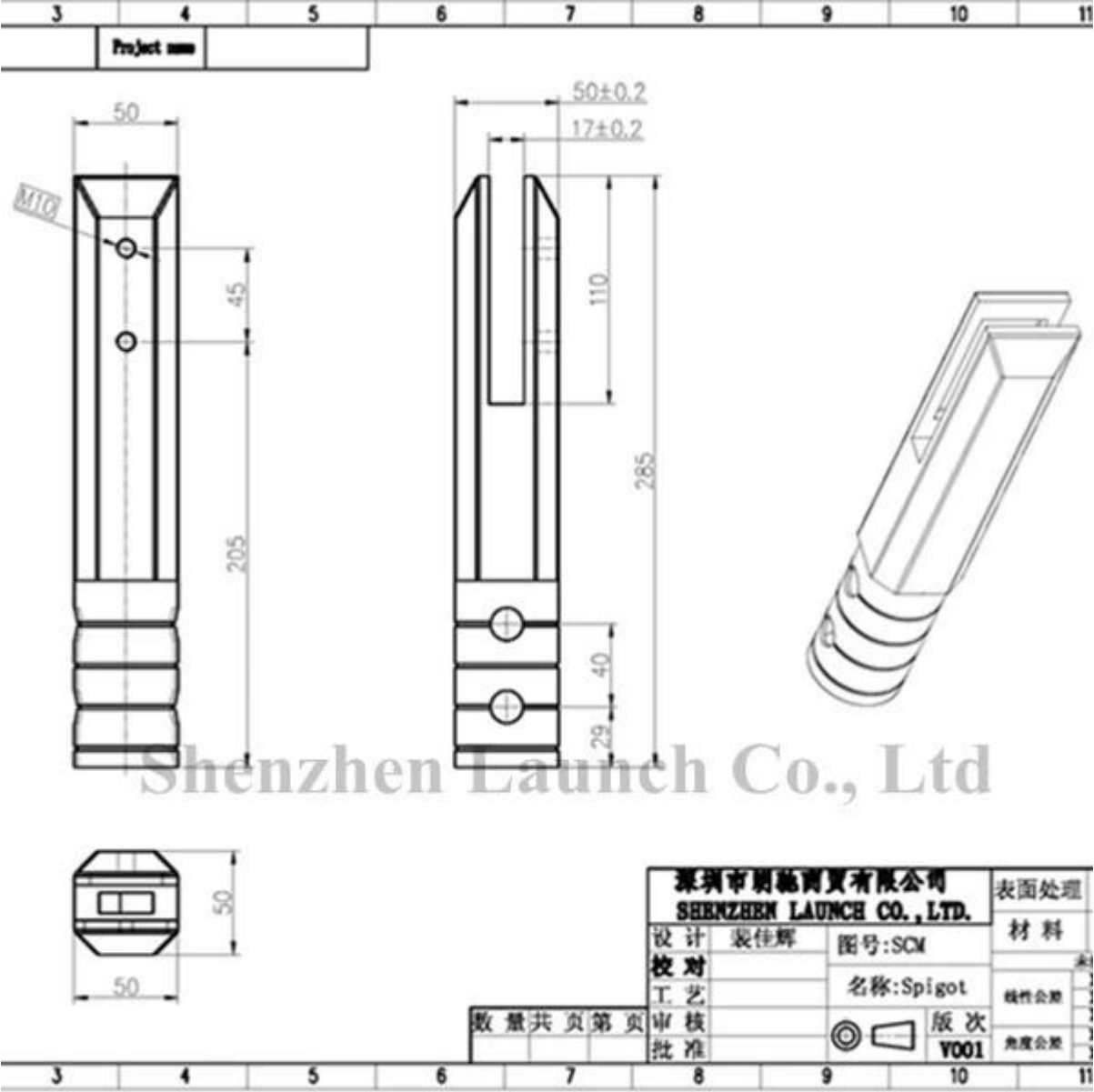


Square core drilled spigots go underground and support glass pool fencing panels .

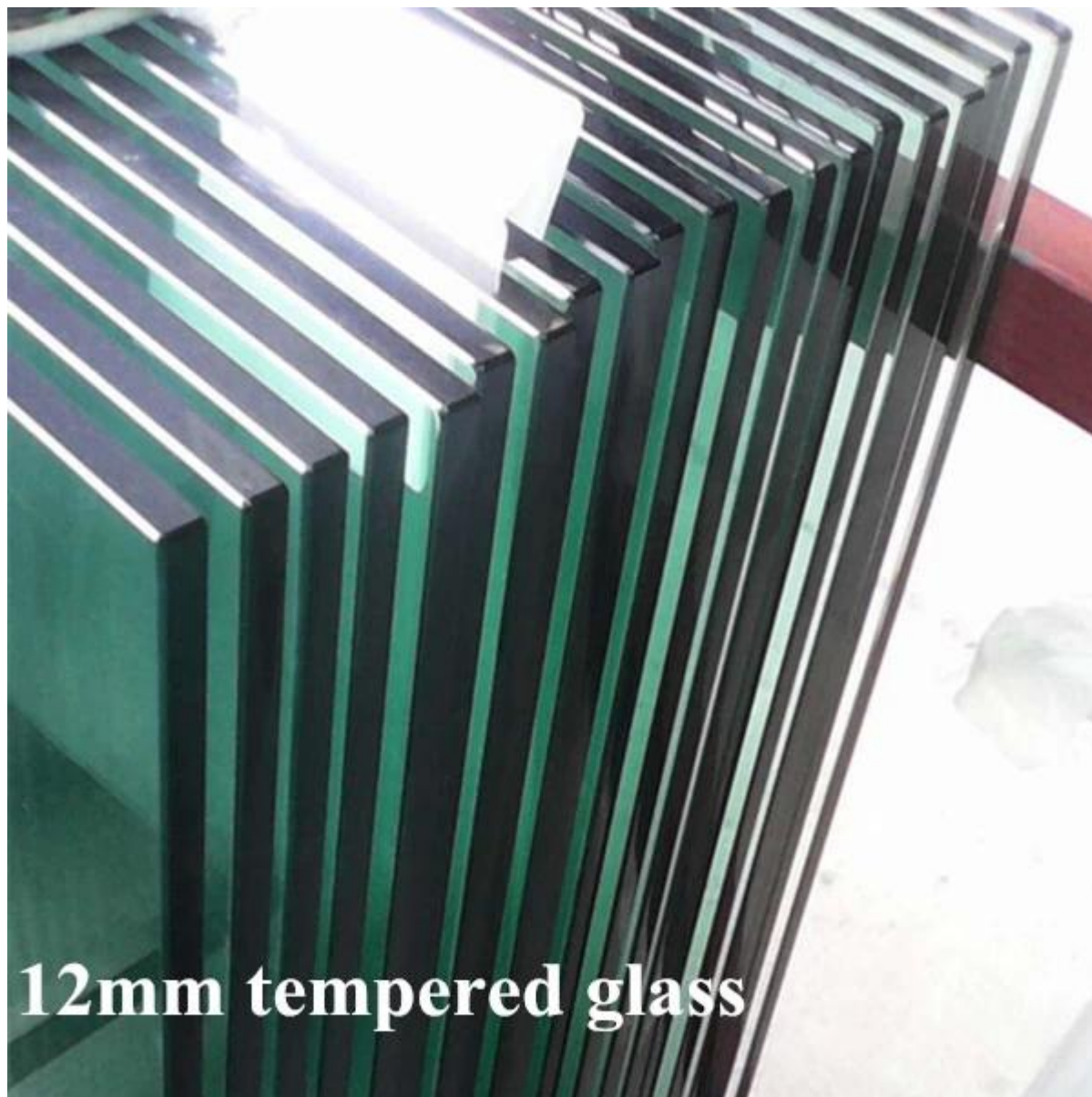
It is made by precision casting as one whole piece ,we usually made it in stainless steel marine grade 316 , 316L and duplex 2205 , with shining polished surface or brushed finish .

Dimensional drawing for square core drill spigot SCM :



You can see from drawing total length of SCM is 285mm , and if you need to make it longer also no problem .

Square core drill spigot SCM is usually for 10-13.52mm thickness glass panels .



Besides square core drill spigot , we also have other types of spigots for your selection :

Round core drill spigot RCM , [click the photo.](#)



**RCM**

Square base plate SBM , click



**SBM**

Round base plate spigot RBM , click



# RBM

Besides above spigots , shenzhen launch also offer [pool fence gate latch](#) , [soft close hinge](#) and [glass fencing panels](#) .

Whether you are wholesaler or construction companies or home owners , you can always expect fast answer and professional suggestions .

Feel free to email or call us !