

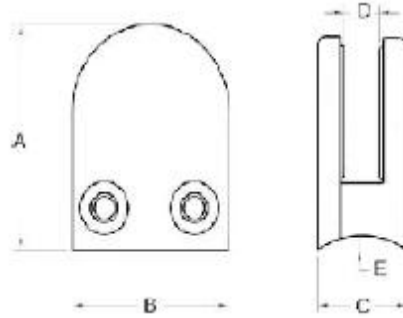
flat bottom D shape stainless steel glass clamp

Flat bottom D shape stainless steel glass clamp specification :

- Material: Stainless steel 304/316;
- For glass thickness: 8-10mm;
- Finish: Brushed or mirror polished.
- Model No.: G104

<http://www.chinabalustrade.com>

Material	Stainless steel 304/ 316
Finish	Satin / mirror polished
For glass thickness	6mm -13.52mm



Model No.	A	B	C	D	E
G103	50	40	22	8	0
G104	50	40	26	12	0
G105	55	45	28	14	0
G103R	52	40	22	8	R-21.5
G104R	52	40	26	12	R-21.5
G105R	58	45	28	14	R-25.4



G104



stainless steel glass clamp installation :



Thanks for your visit, Any interested or needs, please kindly contact with me freely :

Joey Lan

Shenzhen Launch Co., Ltd

www.launch-china.com www.chinabalustrade.com www.launch-china.en.alibaba.com

Email: sales02@launch-china.cn .

Skype: launch-02 . Office: 86-755-86037559 .