

## Flat end stainless steel glass hinge or pool fencing glass to glass hinge

Quick details:

1. Material: stainless steel 316
2. Finish: satin or mirror polished
3. Glass to wall / square post model G-W2
4. 180 degree glass to glass model G-G2
5. Glass to round post model G-R2
6. Suitable for 8-10mm thickness glass

[2. Model No. G-G, glass to glass hinge.](#)



[3. Model No. G-W2, glass to square post / wall hinge.](#)



**G-W 2**

[4. Model No. G-R2, glass to square post / wall hinge.](#)



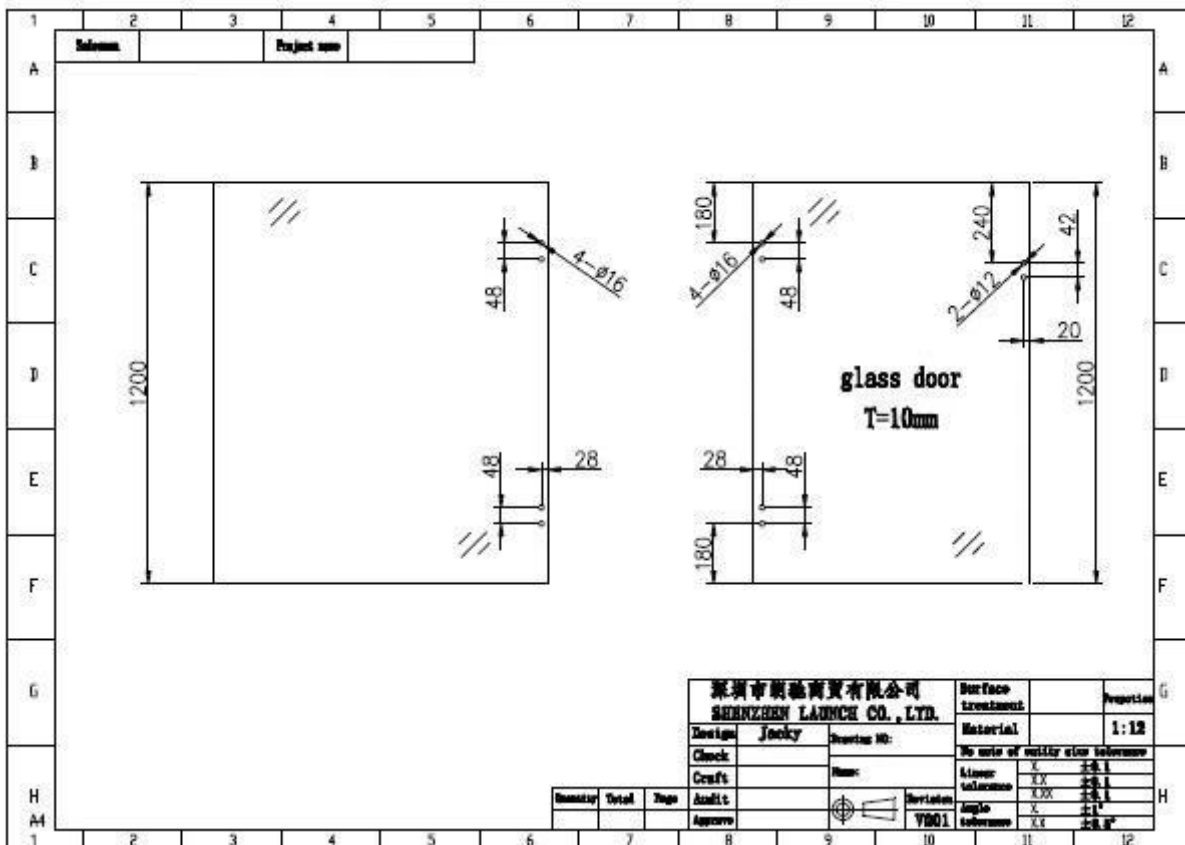
**G-R2**

[pool fencing spring loaded stainless steel 316 glass door hinge installed.](#)



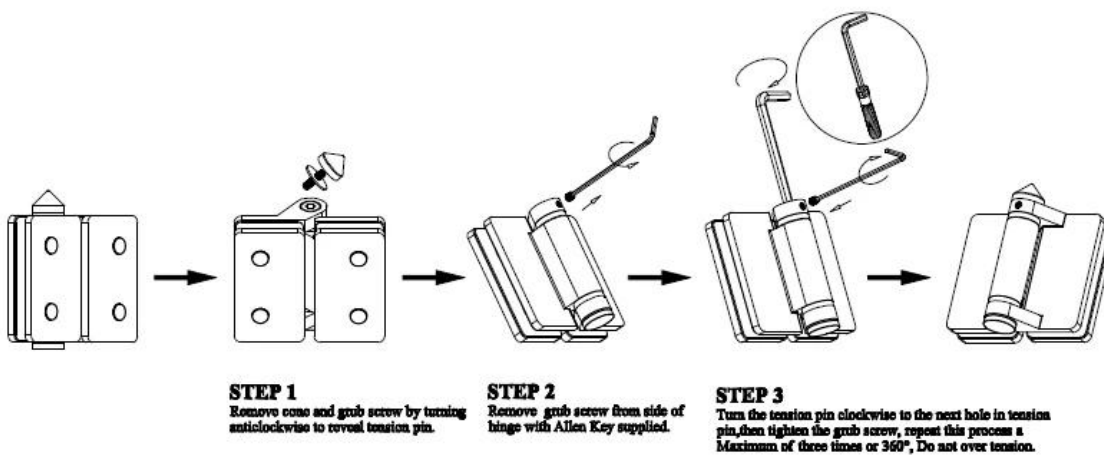
[pool fencing spring loaded stainless steel 316 glass door hinge standard glass panel holes position drawing.](#)





[Pool fencing spring loaded stainless steel 316 glass door hinge install instruction.](#)

### Instructions for adjusting tension on Glass to Glass hinge



Thanks for your visit, Any interested or needs, please contact with me freely :

**Shenzhen Launch Co., Ltd**

[www.launch-china.com](http://www.launch-china.com) [www.chinabalustrade.com](http://www.chinabalustrade.com)

Email: [sales05@launch-china.cn](mailto:sales05@launch-china.cn) .

