

## Stainless steel handrail tube elbows

- 1.stainless steel handrail tube elbow
- 2.SS304 for indoor use and SS316 for outdoor use
- 3.finish:brushed& mirror polished
- 4.to fit round tube size: dia43mm or 50.8mm and square tube 40\*40/50\*50mm with 1.5-2mm wall thickness
- 5.OEM service available
- 6.sample available before order
- 7.country:china

Various types for tube elbows



**E306**



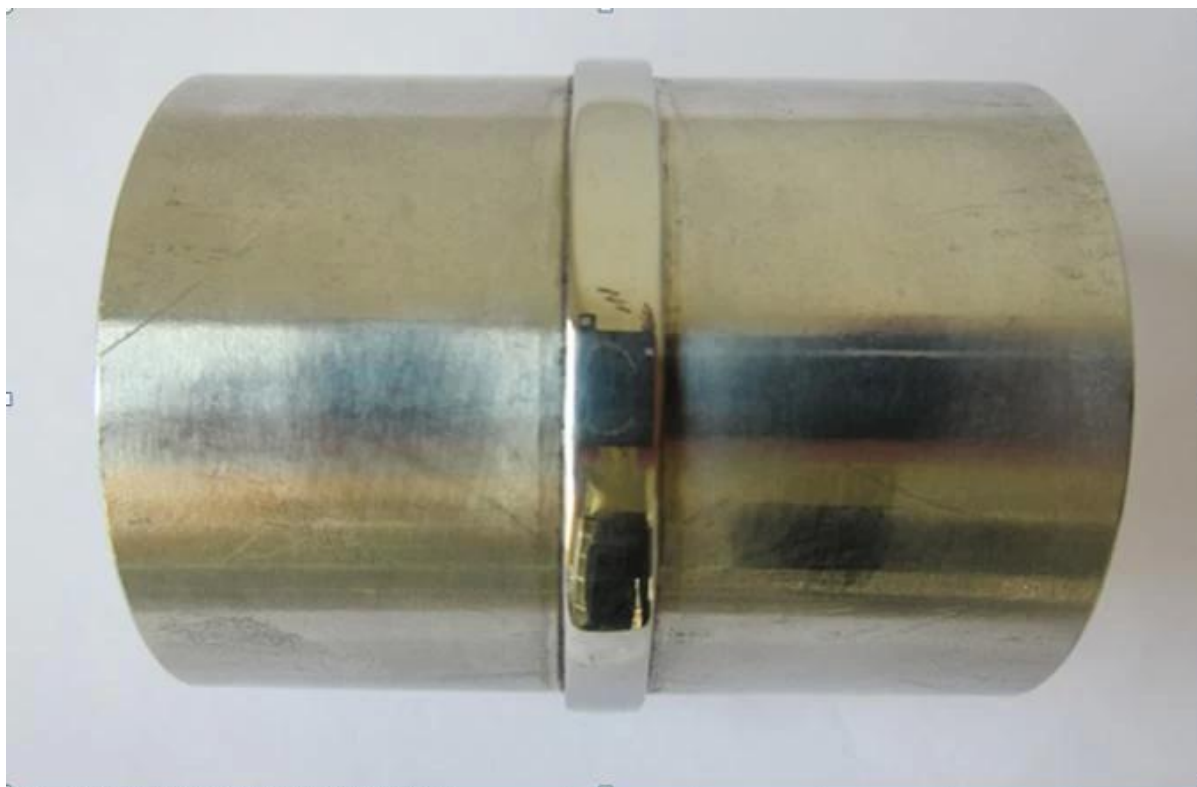
E302 90 degree elbow



E303 tube elbow



E304 middle tube elbow



Other handrail fittings are also available

square tube connector

[stainless steel 304 tube connector for 40\\*40mm tube, stainless steel 316 square connector for 50mm pipe](#)



**S403**

glass standoff

[frameless stainless steel glass standoff for balcony, balcony design stainless steel outdoor glass standoff](#)



## balcony railing design

glass clamp

[stainless steel round glass clamp for stair design,china stainless steel round handrail post glass clamp for balcony](#)



# G103R

glass spigot

[china 12mm frameless glass balustrade spigot supplier, stainless steel 12mm glass spigot for swimming pool fence](#)



[glass hinge](#)  
[stainless steel 316 glass door hinge for pool fencing, 1/2" glass door hinge for glass balustrade](#)



G-G2

glass latch  
[china stainless steel glass latch for pool fencing](#)





GL-180