

## frameless glass balustrade stainless steel standoff bracket accessories

### [1. Model No: SF-50T standoff bracket description:](#)

- 1. one set includes two pieces of standoffs and one piece of stainless plate bracket
- 2. steel plate 200x100mm size;
- 3. one standoff includes two gaskets and one sleeve
- 4. one stainless steel plate with six holes drilled for M10 bolt
- 5. For steel application or wood application

### [2. Glass standoff bracket photos:](#)

#### 1) standoff bracket physical photo & mass goods photo



**SF-50T**

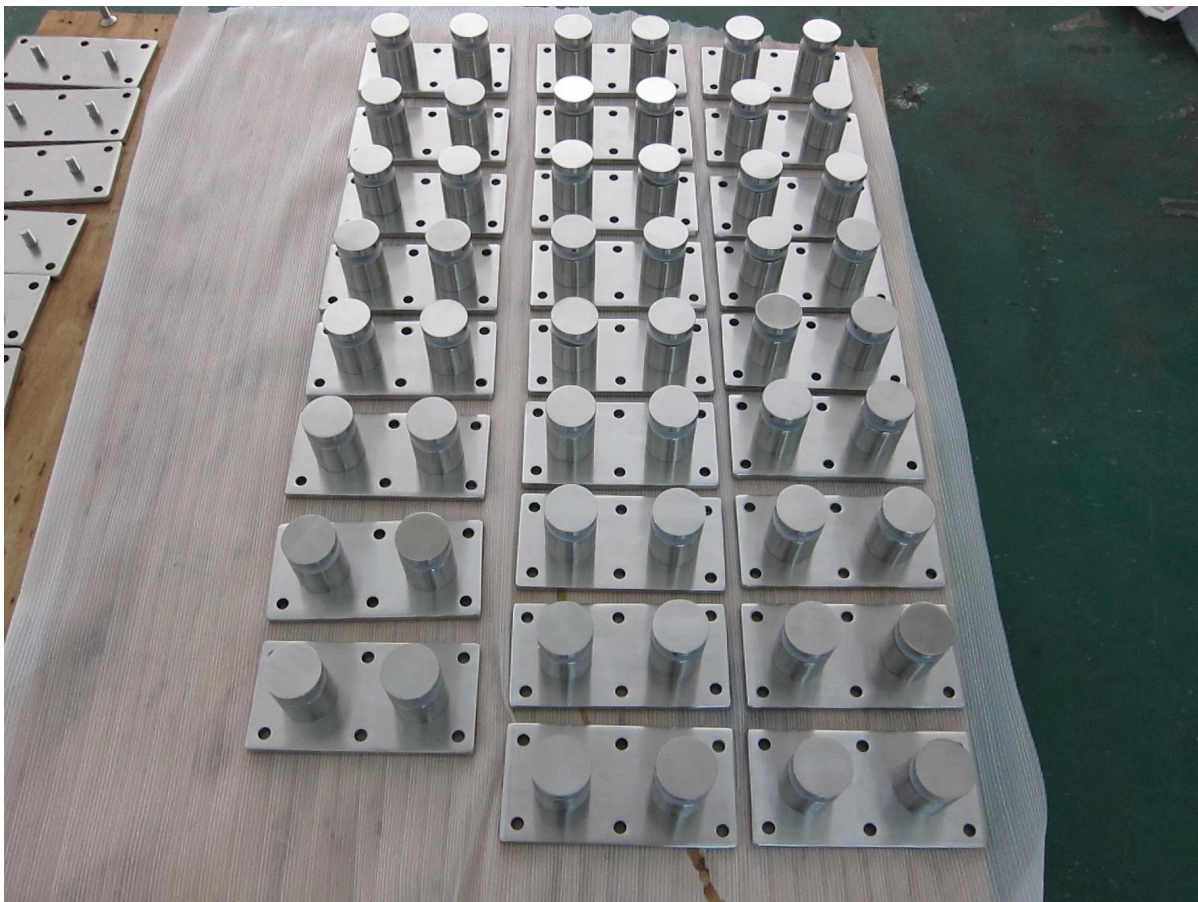
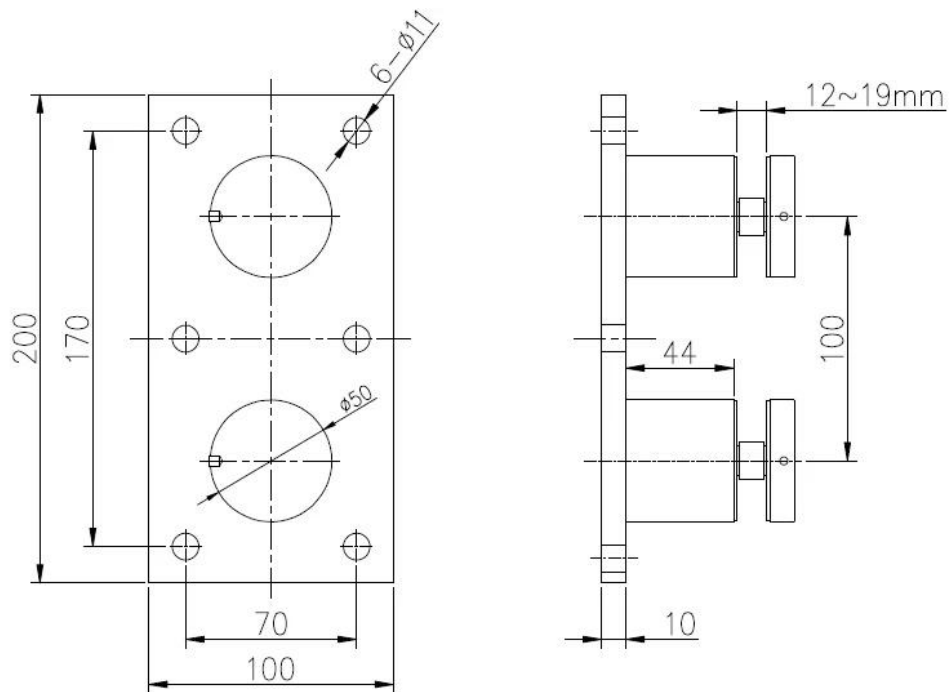


Plate size: 200x100mm, customized as per your demand;  
Plate thickness: 10mm; For glass thickness 10-19mm or thicker;

2) Standoff part size as below:



深圳市朗馳商貿有限公司 SHENZHEN LAUNCH CO., LTD.	Surface treatment	Satin	Prop
--	----------------------	-------	------

3. [Glass railing with standoff bracket project for your reference:](#)











#### [4. The other type glass standoff for your review.](#)

Model No. SF-30 & SF-50 standoff:  
[javascript:void\(0\);/\\*1468207288751\\*/](#)



[5. Mini top handrail fitting for your review.](#)  
[javascript:void\(0\);/\\*1471943046790\\*/](#)





Thanks for your visit, Any interested or needs, please contact with me freely :

Contact: Joey Lan

[www.launch-china.cn](http://www.launch-china.cn) [www.chinabalustrade.com](http://www.chinabalustrade.com)

Email: [sales02@launch-china.cn](mailto:sales02@launch-china.cn) .

Skype: launch-02 . Office: 86-755-86037559.



