

Frameless glass pool fence spring loaded glass gate hinge for 8-12mm thickness glass gate with max. door weight 30kg .

Features of glass gate hinge -

- Item code - G-G
- Material- 316 stainless steel
- Finish- satin/mirror /black
- For glass thickness 8-12mm
- max. door weight 30kg
- to be used together with our glass latches
- spring loaded type
- heavy duty glass door hinges

Dimensions of glass gate hinge G-G

Spring loaded hinges

Stainless steel spring loaded hinges
-Made of SS 316
- For use of 8-12.76mm glass

Maximum door leaf weight : 30 kg /pair
Maximum door leaf width : 900mm
Spring can be adjusted for closing speed control .

Part # G-G

Part # G-R

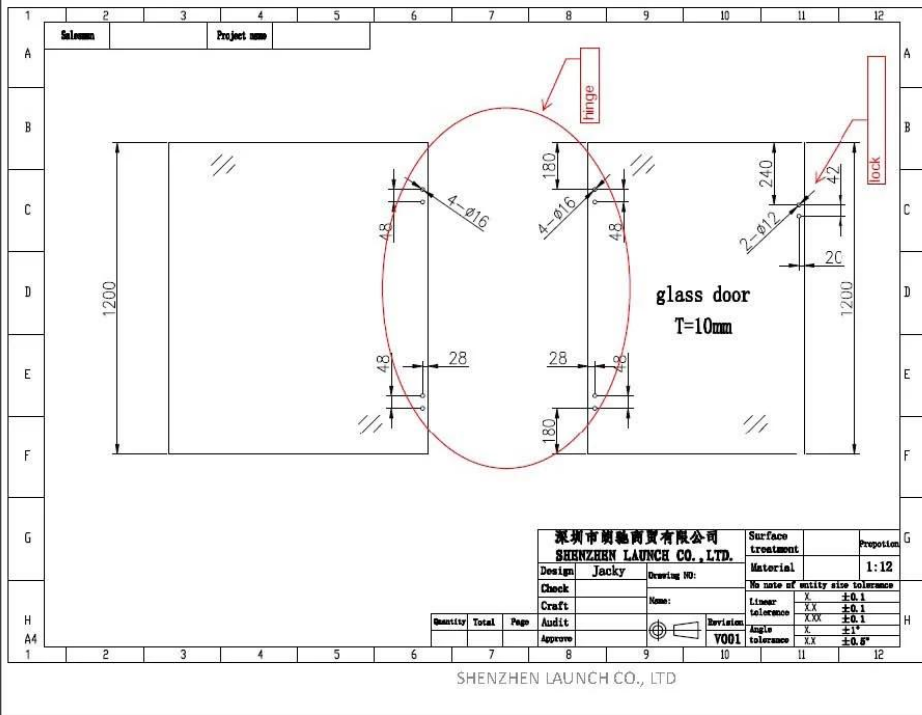
Part # G-W

SHENZHEN LAUNCH CO., LTD

1

Spring loaded hinges

Glass hole drawing for hinge set & glass latch



PACKING DETAILS FOR GLASS GATE HINGE-

Spring loaded hinges

Packaging :
 -2 pcs into a designed white box
 -6 boxes into a carton



Project photos of glass gate hinges for frameless glass railings-

Spring loaded hinges

Project photos -



SHENZHEN LAUNCH CO., LTD

4

