

glass mounting brackets clamps for side fixed stainless steel handrail

Stainless steel 304 material is applied to indoor railing.

Stainless steel 316 material is done to outdoor railing. One piece of glass mounting bracket is required to drill one hole in glass. And it must be side fixing handrail. We have two models , one is for round tubing handrail and the other is for square tubing handrail.

SPECIFICATIONS:

1. stainless steel 304 or 316 material
2. satin or mirror finish
3. to fix side handrail
4. handrail could be round or square
5. drill one hole in glass for each bracket
6. size can be custom made

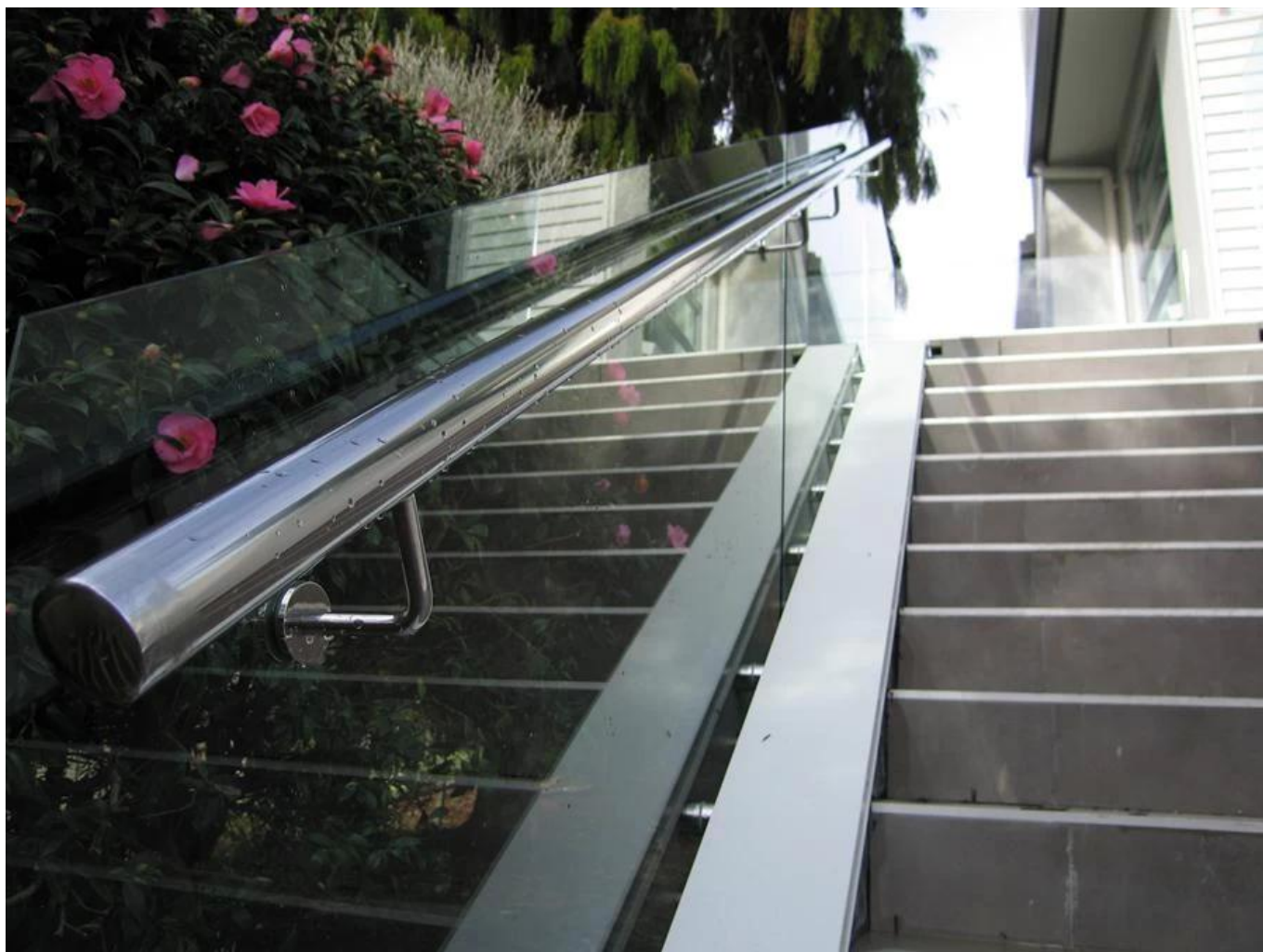
Here is the product picture,one is satin finish and the other is mirror finish:





See the project picture here :





Thanks for your visting, Any needs or question, contact with me freely :

Contact: Joey Lan

Email: sales02@launch-china.cn .

Skype: launch-02 . Mob/Wechat/WhatsApp: 86-18707054903 .