

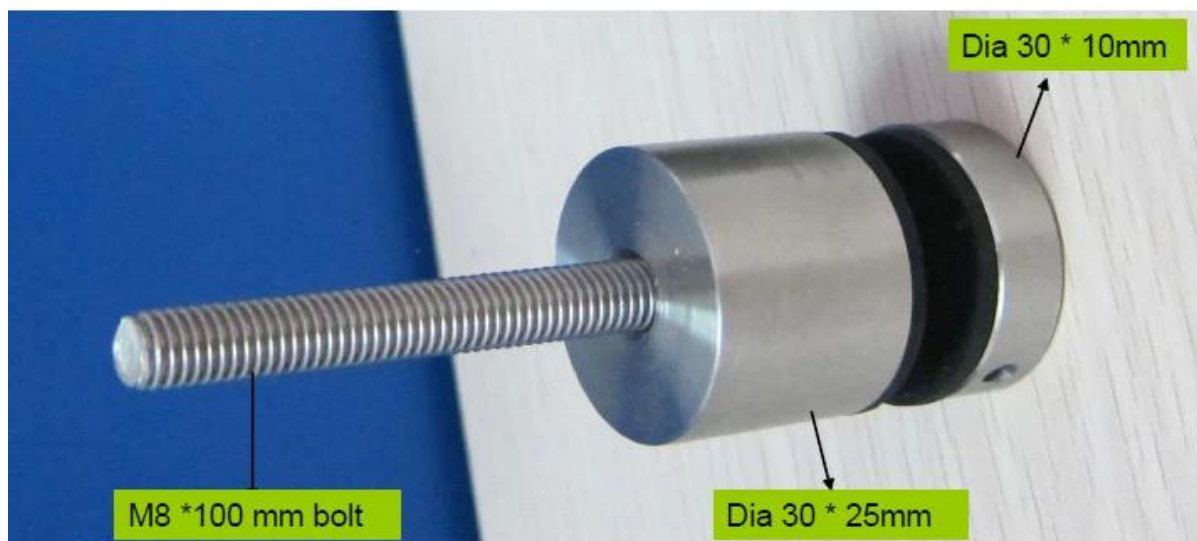
glass panel mounting brackets glass fittings stainless steel standoff

1. Glass panel mounting brackets standoff features:

- Material: Stainless steel 304/316
- Finish: Satin or mirror polished
- For glass thickness: 6-19mm thickness
- Solid, high quality, rubber gasket included
- Custom size available.
- **Model No.SF-30:** 30*10mm cap , 30*25mm body , M8*100 bolt, mount to concrete / M8*50 bolt, mount to wood .
- **Model No.SF-50:** 50*12mm cap , 50*30mm body , M12*120 bolt, mount to concrete / M12*72 bolt, mount to wood .
- **Model No.SF-50T:** one set includes two pieces of standoffs and one piece of stainless steel plate 200x100mm size .

2. Stainless steel standoff Model No. & project photos

1). Model No. SF-30 stainless steel standoff .





2). Model No. SF-50 stainless steel standoff.





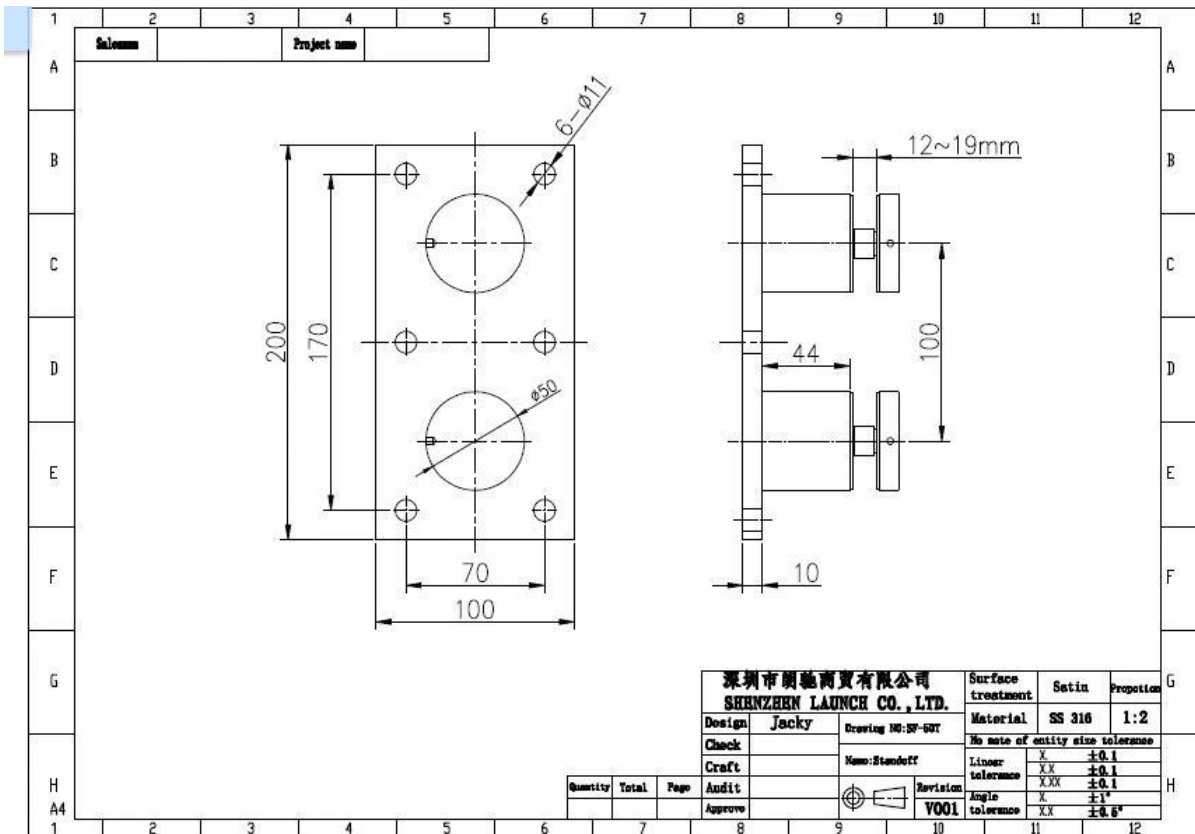
Mirror



Satin

SF-50

3). Model No. SF-50T stainelss steel standoff.



3. stainless steel 316 marine grade standoff glass railing system project for your reference:







Thanks for your visit, Any interested or needs, please contact with me freely :

Joey Lan

Shenzhen Launch Co., Ltd

www.launch-china.cn www.chinabalustrade.com

Email: sales02@launch-china.cn.

Skype: launch-02. Office: 86-755-86037559.

Add: B5-003, 5/F-Block 3, Yilida Building, No.1092 Nanshan Road, Nanshan District, Shenzhen, china. Postal code 518054.