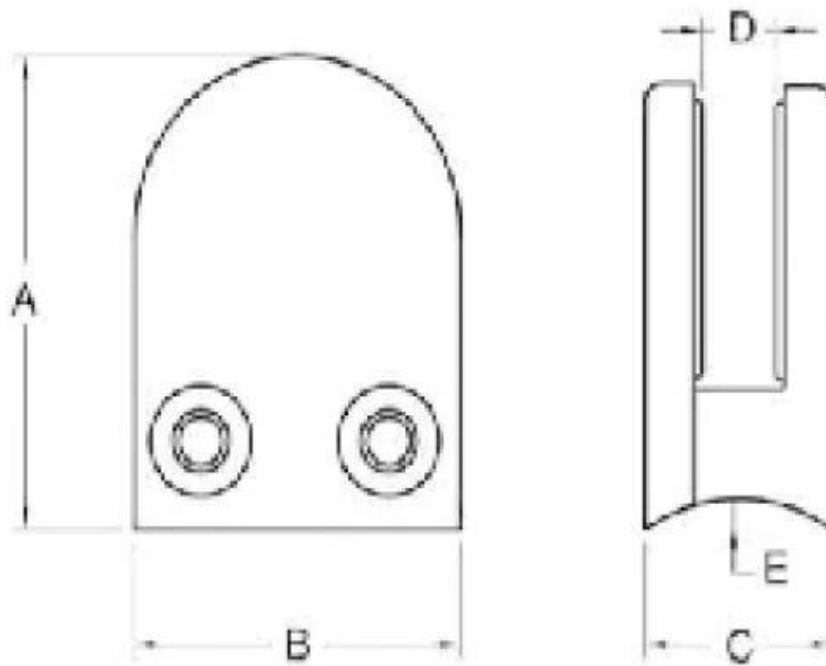


Stainless Steel Polished Glass Clamp For 6-13.52 mm Thickness Glass

Product description:

1. Material: Stainless steel 304/316
2. Finish: Satin or mirror polished
3. Glass thickness: 6 mm-13.52 mm

Drawing and dimension



Model No.	A	B	C	D	E
G103	50	40	22	8	0
G104	50	40	26	12	0
G105	55	45	28	14	0
G106	50	40	25	11	0
G103R	52	40	22	8	R-21.5
G104R	52	40	26	12	R-21.5
G105R	58	45	28	14	R-25.4
G106R	52	40	25	11	R-21.5

Products information





Project photos





Package details: 1 pc in a plastic bag, 10 PCs in a small box, 100 pieces of the box.



**Need a quote or have any questions, please leave a message.
Or contact me with the information below. will get back to you ASAP!**

