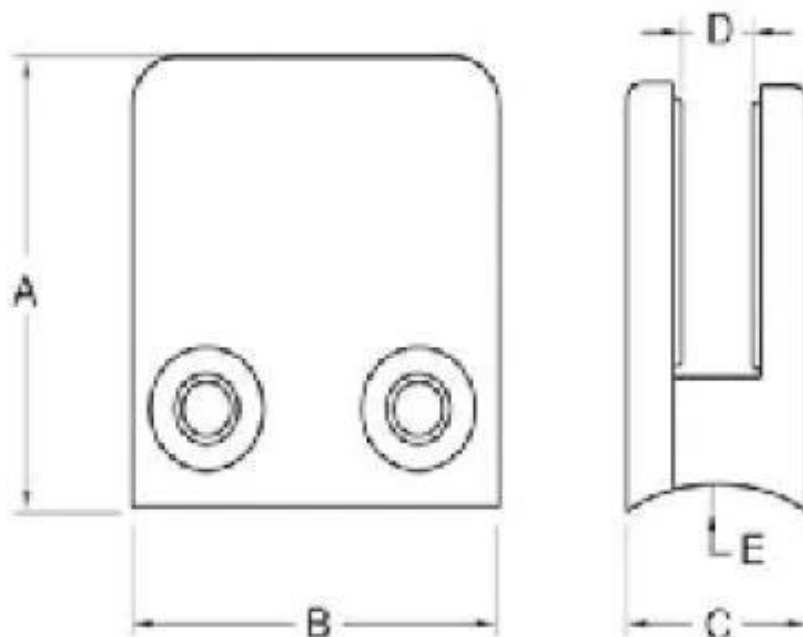


Stainless Steel Polished Glass Clamp For 8-10mm Thickness Glass

Product description:

1. Material: Stainless steel 304/316
2. Finish: Satin or mirror polished
3. Glass thickness: 8mm-10mm

Drawing and dimension



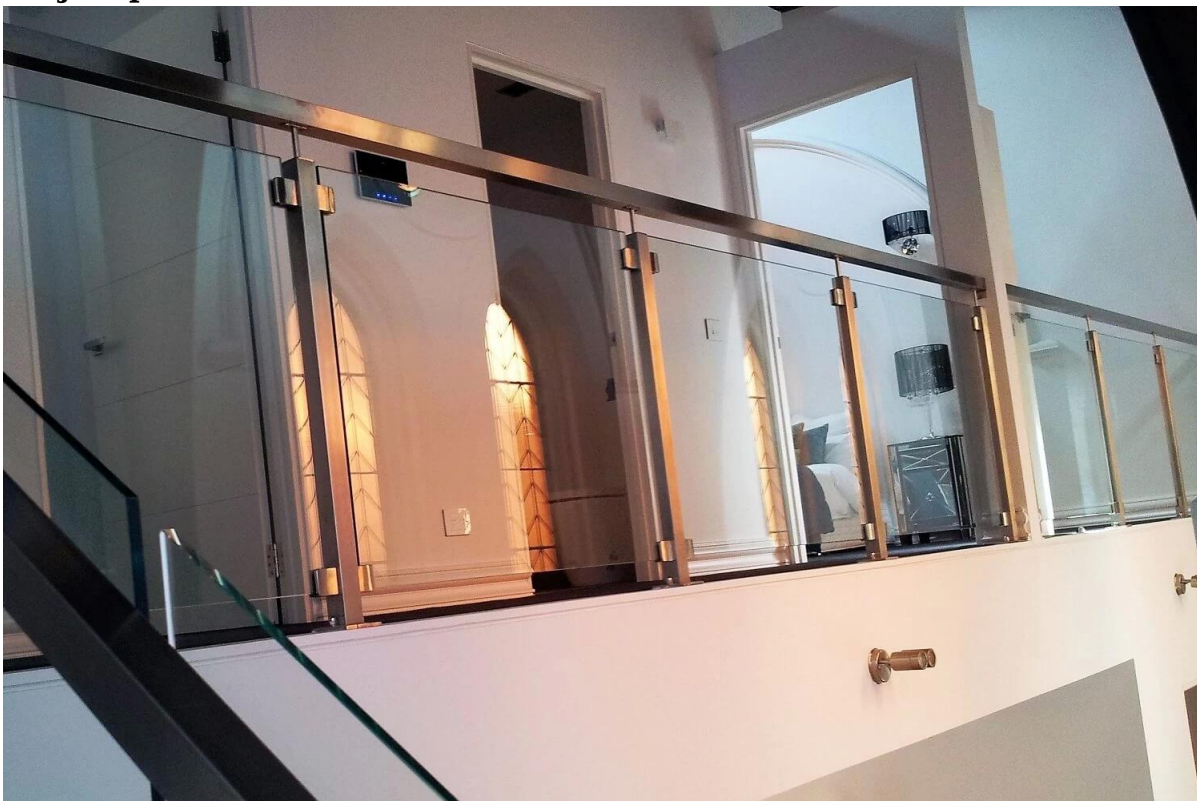
Model No.	A	B	C	D	E
G102	44	44	25	11	0
G102R	48	44	25	11	R-21.5

Products information





Project photos





Package details: 1 pc in a plastic bag, 10 PCs in a small box, 100 pieces of the box.



**Need a quote or have any questions, please leave a message.
Or contact me with the information below. will get back to you ASAP!**

KEBIL 科比奥

深圳市朗驰商贸有限公司
SHENZHEN LAUNCH CO., LTD.

朗驰国际有限公司
LAUNCH INTERNATIONAL LIMITED.

季敏

Merlin Ji

Senior Sales Representative

☎ (86) 189 6294 5180

深圳市南山区南山大道1092号亿利达大厦B区3栋5003

Room 5003, Building 3, Yilida Building, No.1092
Nanshan Road, Nanshan District, Shenzhen, China
postal code 518054

☎ (86-755) 8603 7559

☎ (86-755) 8637 2611

✉ sales06@launch-china.cn

🌐 www.launch-china.com

www.chinabalustrade.com