

Stainless steel duplex 2205 material in ground core drill square glass spigot for frameless glass pool fence .

Specifications for in ground type core drill glass spigot-

- Model No. SCM
- Material : duplex 2205
- Finish : polished or brushed
- Glass thickness : 8mm 10mm 12mm 13.52mm
- Total height 285mm
- With cover ring
- Made by precision casting
- 2 pcs glass spigot to support 1 glass panel within 1200mm width

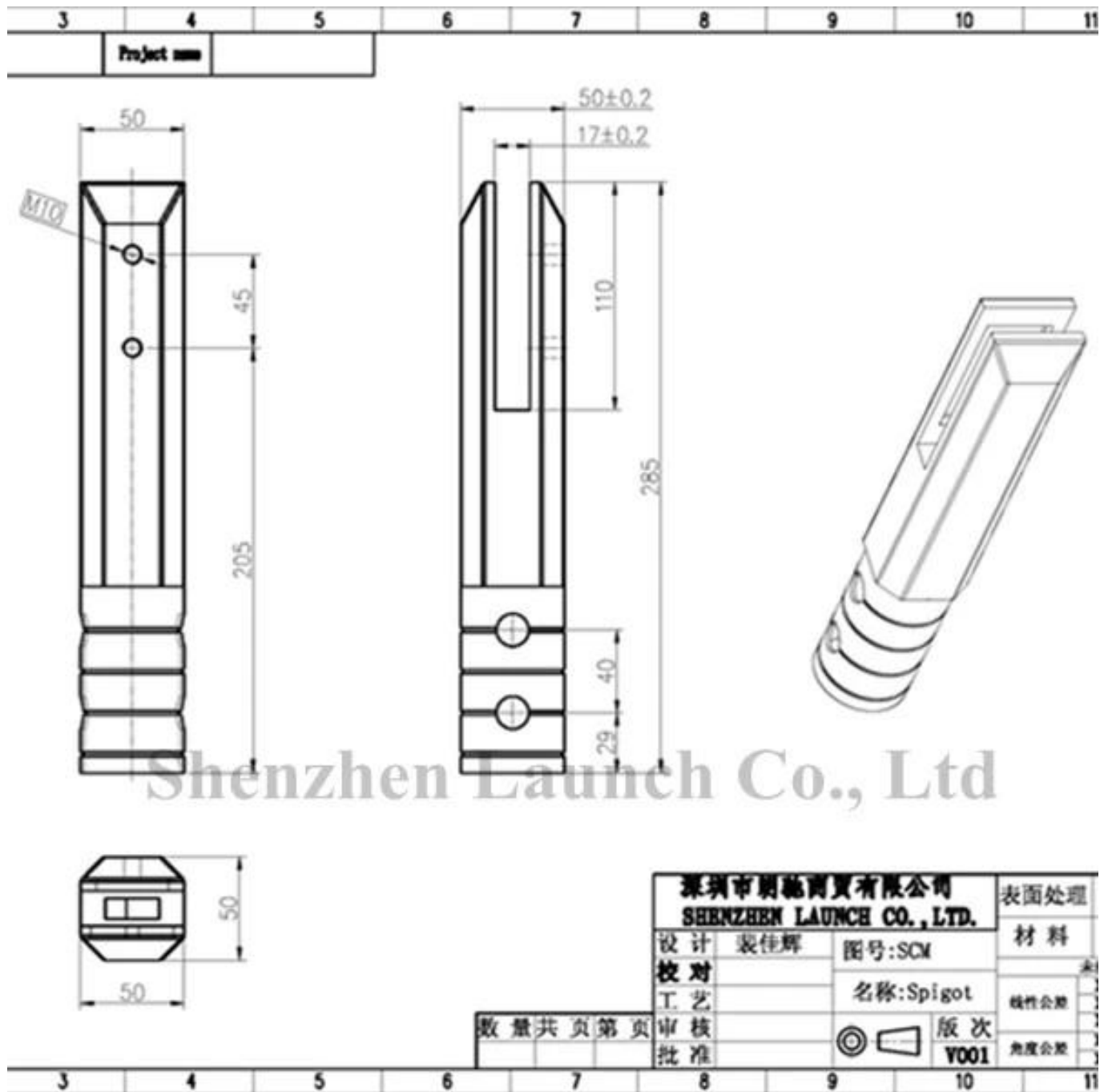
Photos of SCM in ground core drill square glass spigot-







Drawing for in ground core drill square glass spigot for frameless glass pool fence -



Production & packing for in ground core drill square glass spigot for frameless glass pool fence -







PROJECT PHOTOS FOR in ground core drill square glass spigot for frameless glass pool fence -



KEBIL 科比奧





Related glass pool fence hardwares -

[Glass hinge](#) , spring loaded type

Spring loaded hinges

Stainless steel spring loaded hinges

-Made of SS 316

- For use of 8-12.76mm glass

Maximum door leaf weight : 30 kg /pair

Maximum door leaf width : 900mm

Spring can be adjusted for closing speed control .



Part # G-G



Part # G-R



Part # G-W

SHENZHEN LAUNCH CO., LTD

1

[Glass latch](#) , magnetic glass gate latches -

Magnetic glass latches

Stainless steel glass latches

-Made of SS 316

- For use of 8-12.76mm glass

- types :

- glass to glass latch 180 degree
- glass to glass latch 90 degree (in swing & out swing)
- glass to wall latch
- glass to round post latch

Maximum door leaf weight : 30 kg /pair

Maximum door leaf width : 900mm

SHENZHEN LAUNCH CO., LTD

1

Spring loaded hinges

Glass latches with plastic cover



MODEL # GL-180



MODEL # GL-90



MODEL # GL-W



MODEL # GL-R

SHENZHEN LAUNCH CO., LTD

2

Spring loaded hinges

Glass latches with stainless steel cover



GL-180SS



GL-90SS



GL-WSS



GL-PSS