

Hinge description:

Pool Gate Glass Spring Hinge

Model: Glass to Glass Hinge

Model No.: G-G2

Pool Gate Hardware Kit includes 1 X Magnetic latch and 2 X Self-closing hinges ,all screws and free installation tools.

Marine grade STAINLESS STEEL 316 made with a fantastic great MIRROR or SATIN polish finish.

Suits 8mm/10mm/12mm toughened glass gate

Model G-G2 Glass to Glass Pool Gate Hinge

2 of self-closing spring hinge to suit Glass/ Glass application



G-G2 Hinge dimension:

1 of glass to glass hinge 80mm WIDTH

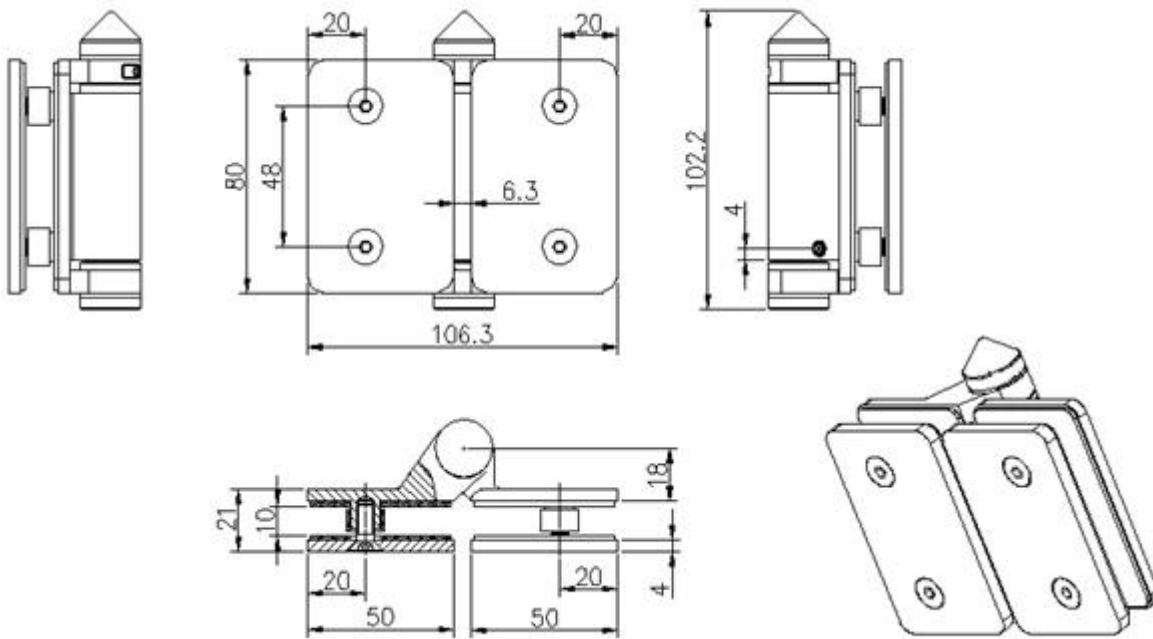
1 of glass to glass hinge 106.3mm LENGTH

1 of glass to glass hinge 21mm THICKNESS

Distance between two screws 48mm

Distance from screw to hinge edge: 20mm

Please refer to below dimension drawing:



#### G-G2 Hinge technical information:

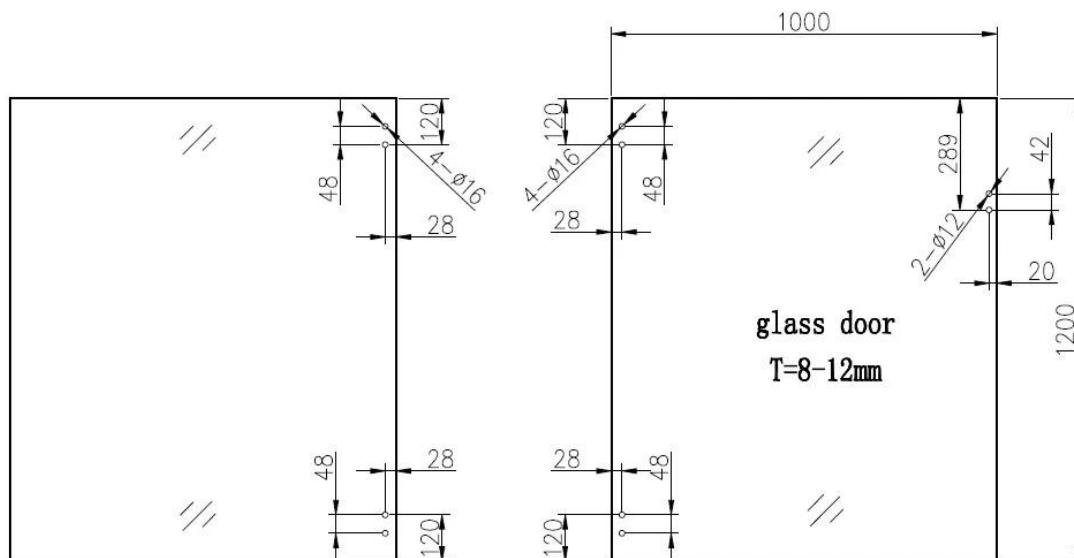
Glass to gate gap 18mm, suits 8/10/12mm toughened glass gate, will fit onto 10/12mm fixed glass

1 of glass to glass hinge with 2 SCREWS GAP 42 mm

Pool gate glass panel hole - 20mm in from glass edge, 42mm apart.

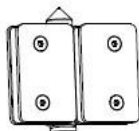
Glass to gate gap 18mm, suits 8/10/12mm toughened glass gate

please download here for the technical drawing:

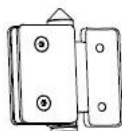


## Glass gate hinge series

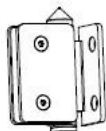
- 1、Glass-Glass hinge, Glass to Wall hinge and Glass to Round post hinge are suitable for 1000x1200mm glass gate 8-12mm thick .  
When you open the glass gate it will close automatically .
- 2、Our glass hinges are made by precision casting with stainless steel 316 material , satin and mirror finish optional .
- 3、Our hinges must be applied on tempered glass .



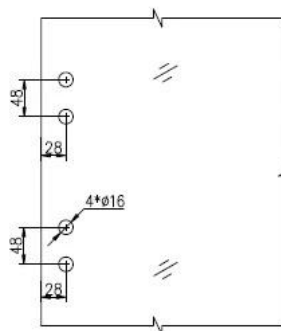
Glass to Glass



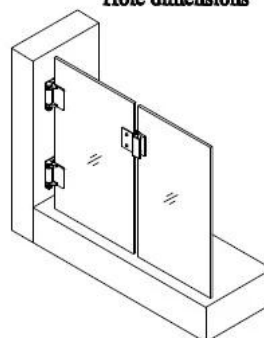
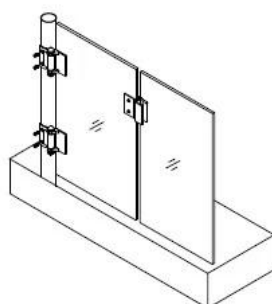
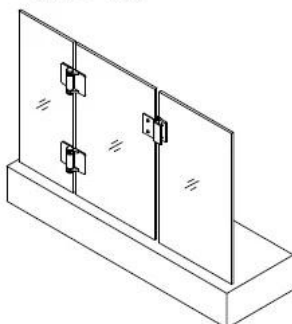
Glass to Round post



Glass to Wall



Hole dimensions



For Glass Pool Gate Hinge & Installation, Please see below video link:

<https://www.youtube.com/watch?v=DKZIF0cAt1M>

For Glass Pool gate hinge Packaging, Please below packaging photos:



