

Stainless steel balustrade post

Product Description

- 1.item No.:LCH-108
- 2.product name:balustrade post
- 3.material:SS304/316
- 4.surface treatment:brushed and polished
- 5.post height:950-1500mm
- 6.round post:dia43/50.8mm
- 7.DIY design
- 8.for glass thickness:8-12mm
- 9.usage:for balcony,stair/swimming pool fence,etc
- 10.no limit on MOQ
- 11.fittings including glass clamps,base cover and base plate,end cap,top bracket.



LCH-108

one way post



two-way post 180 degree



square types of balustrade post



LCH-103



LCH-104

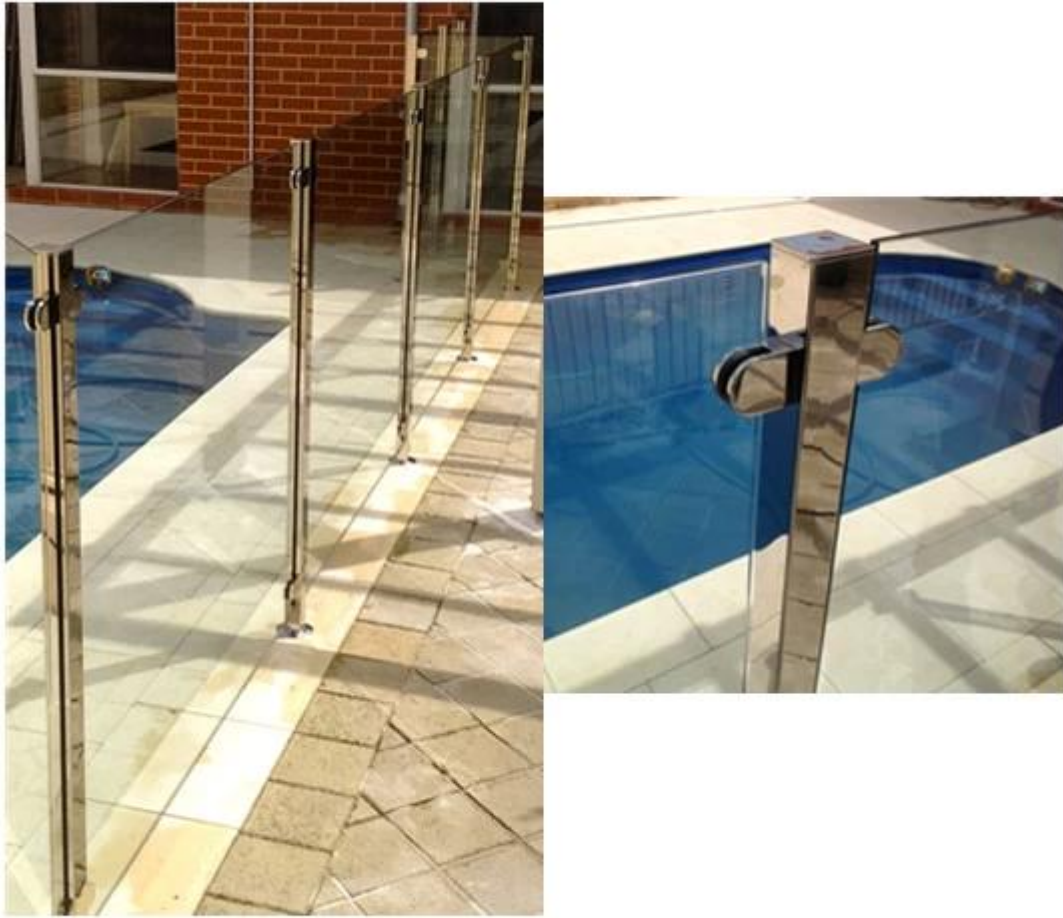
project pics

www.launch-china.cn



^o^ email:sales03@launch-china.cn

www.launch-china.cn



^o^ email:sales03@launch-china.cn