

Model SCM-2, square core drill spigot is very popular design in Australia, NZ, Norway, Canada. It is used as support brackets to hold 10-13.52mm tempered glass panels for swimming pool fencing, or balconies.

Specifications :

- stainless steel 316,316L , duplex 2205
- satin or mirror polished
- for 10-13.52mm tempered glass
- square core drill spigot
- AS/NZS standard
- 285mm height
- Weight : 2.1kg
- Fitting included : cover,screws,rubber gaskets
- Application : 2 spigots support 1 glass panel

Different Models of spigot available :

- Square base plate spigot SBM
- Round base plate spigot RBM
- Square core drill spigot SCM
- Round core drill spigot RCM
- Square core drill spigot with added length SCM-1
- Round core drill spigot with added length RCM -1

Packing Details :

- plastic bag+small white box+carton
- 1 spigot into a plastic bag, then into a white box ;
- 10 or 12 spigots into a carton

Products details

KEBIL 科比奥®



SCM



Mirror



Satin

Project photos



Strength test report

Results Summary

(For details of individual tests, refer to the tables on the following pages.)

ID	Item/Heat No.	Dimensions/Type/Details	Finish	Overall Assessment
14117/01	SSBM316	180mm High, 50mm Square, Base Plate 316 Stainless steel	316L	COMPLIES


Remarks

After completion of the testing, the spigot was found to be in sound condition with no breakage, tearing or signs of fracture and no looseness of the fixings.

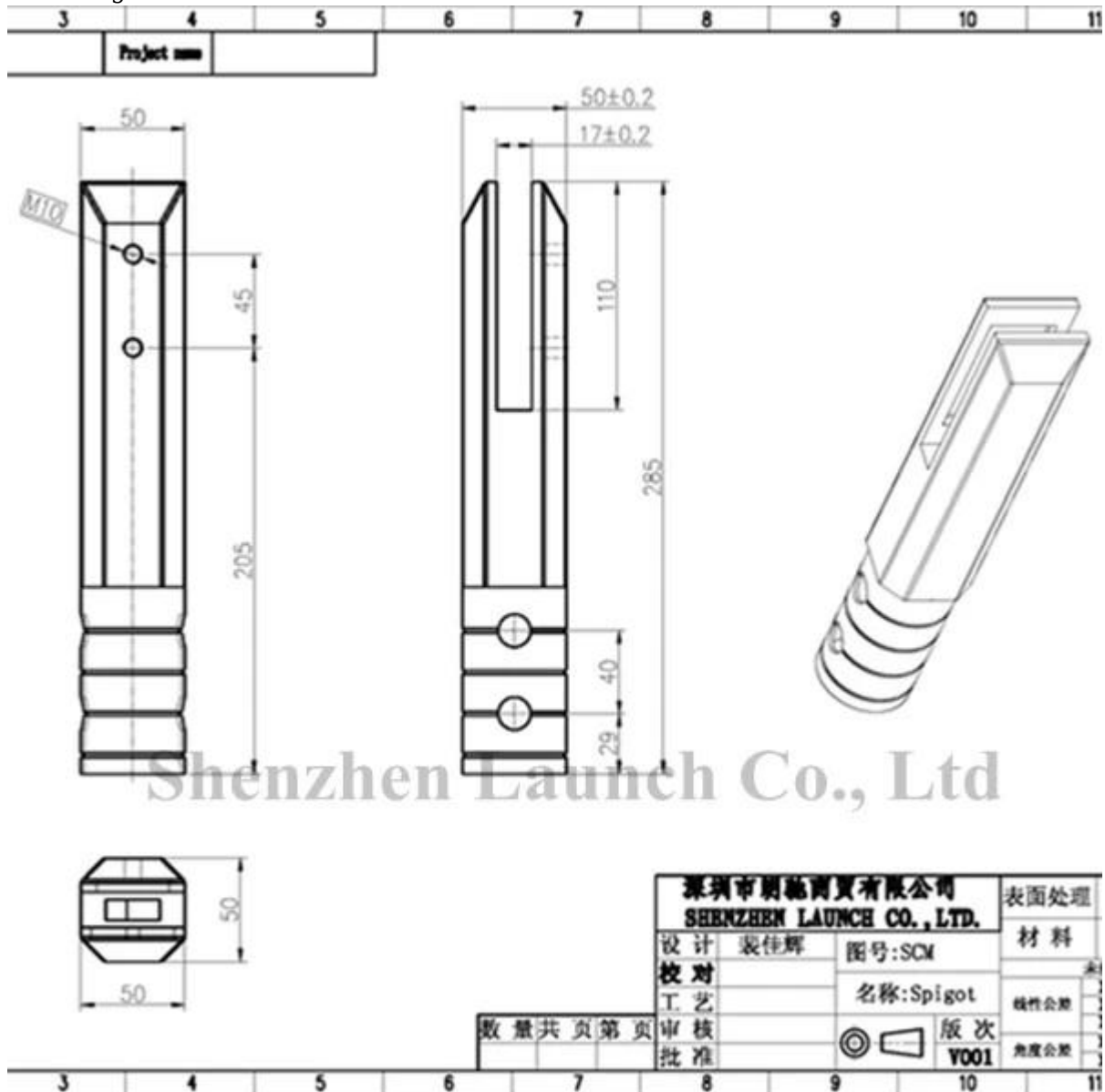


Colin Lorrimar
Metallurgical Testing Manager



Accreditation No. 
Accredited for compliance
with ISO/IEC 17025

Drawing



Certification



ISO
9001:2008
REGISTERED



Shenzhen Launch Co.,Ltd



www.launch-china.cn

Need a quote or any questions, please leave a message.
Or contact me as below info. will get back to you ASAP!

KEBIL 科比奥®

深圳市朗驰商贸有限公司
SHENZHEN LAUNCH CO., LTD.

朗驰国际有限公司
LAUNCH INTERNATIONAL LIMITED.

季敏 Merlin Ji

Senior Sales Representative

☎ (86) 189 6294 5180

深圳市南山区南山大道1092号亿利达大厦B区3栋5003

Room 5003, Building 3, Yilida Building, No.1092
Nanshan Road, Nanshan District, Shenzhen, China
postal code 518054

☎ (86-755) 8603 7559

☎ (86-755) 8637 2611

✉ sales06@launch-china.cn

🌐 www.launch-china.com

www.chinabalustrade.com