

square stainless steel balustrades top rails for frameless glass railing

1.stainless steel balustrades top rails description,

Material	stainless steel 316L/316/304
Finish	Brushed or Mirror polished
Dimension	1. Round shape: dia 25.4mm, groove 14*14mm, 5.8 meter per length, or as per your requirement. 2. Square shape: 25*20mm, groove 14*14mm, 5.8 meter per length, or as per your requirement.
For glass thickness	8-13.52mm
Rail fittings	180 degree connector, 90 degree connector, wall to rail connector bracket, end cap
position	deck railings, porch railings, balcony railing, frameless spigot glass railing, swimming pool fence railings etc.



**mini top rail**



**square top raip fittings**



**[www.launch-china.cn](http://www.launch-china.cn)**



2. square stainless steel balustrades top rails details:

90 degree Corner connector



180 degree middle connector



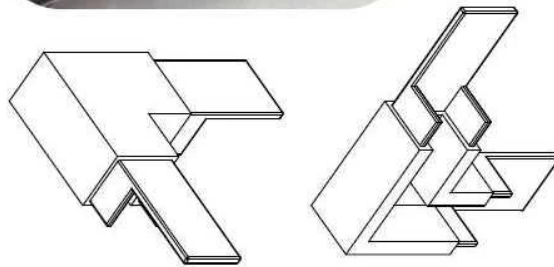
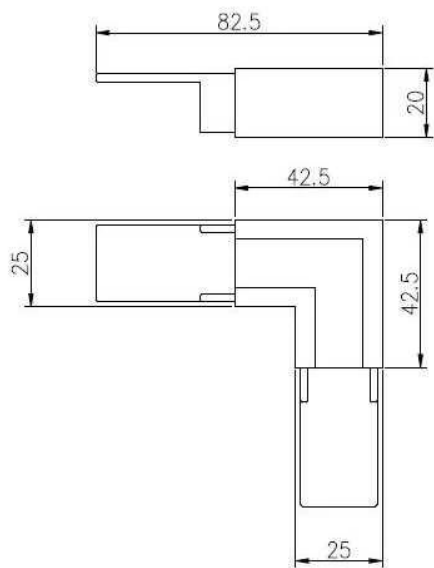
End Cap



Wall Bracket

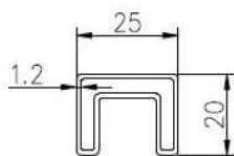


## 90 degree connector drawings

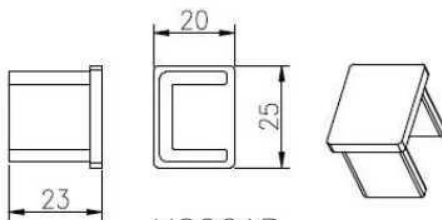


MSQC90

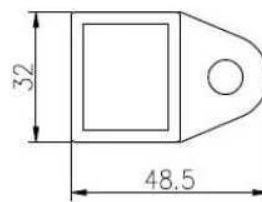
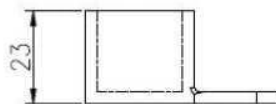
## Slot tube handrail + end cap + wall bracket connector drawings



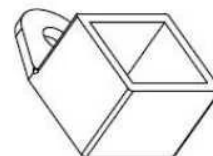
25\*20 tube



MSQCAP

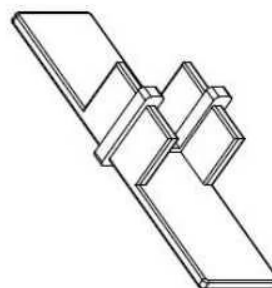
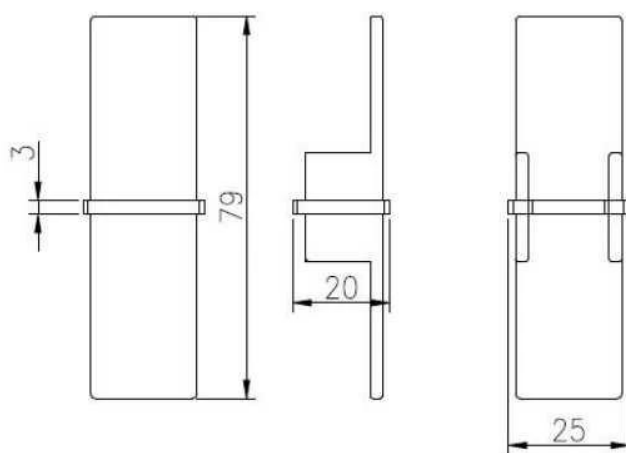


MSQCW





180 degree connector drawings



MSQC180

3. square stainless steel balustrades top rails project:





4. Round shape diameter 25.4mm stainless steel balustrades top rails,





**mini top rail**



**square top raip fittings**



**[www.launch-china.cn](http://www.launch-china.cn)**

Tips: For an installation, rubber groove inside the channel for adjust to the thickness of glass.  
No hole needs in glass.



Thanks for your visit, Any interested or needs, please contact with me freely :

Joey Lan

**Shenzhen Launch Co., Ltd**

[www.launch-china.com](http://www.launch-china.com) [www.launch-china.en.alibaba.com](http://www.launch-china.en.alibaba.com) [www.chinabalustrade.com](http://www.chinabalustrade.com)

Email: [sales02@launch-china.cn](mailto:sales02@launch-china.cn) .

Skype: launch-02 . Office: 86-755-86037559 .

