

stainless steel 180 degree straight glass clamp for stair glass railing

Material: stainless steel 304/316

For glass thickness: 8-12mm

Size: 80x35mm or customized size;

Thickness: 5mm;

Middle bolt: M6 or M8;

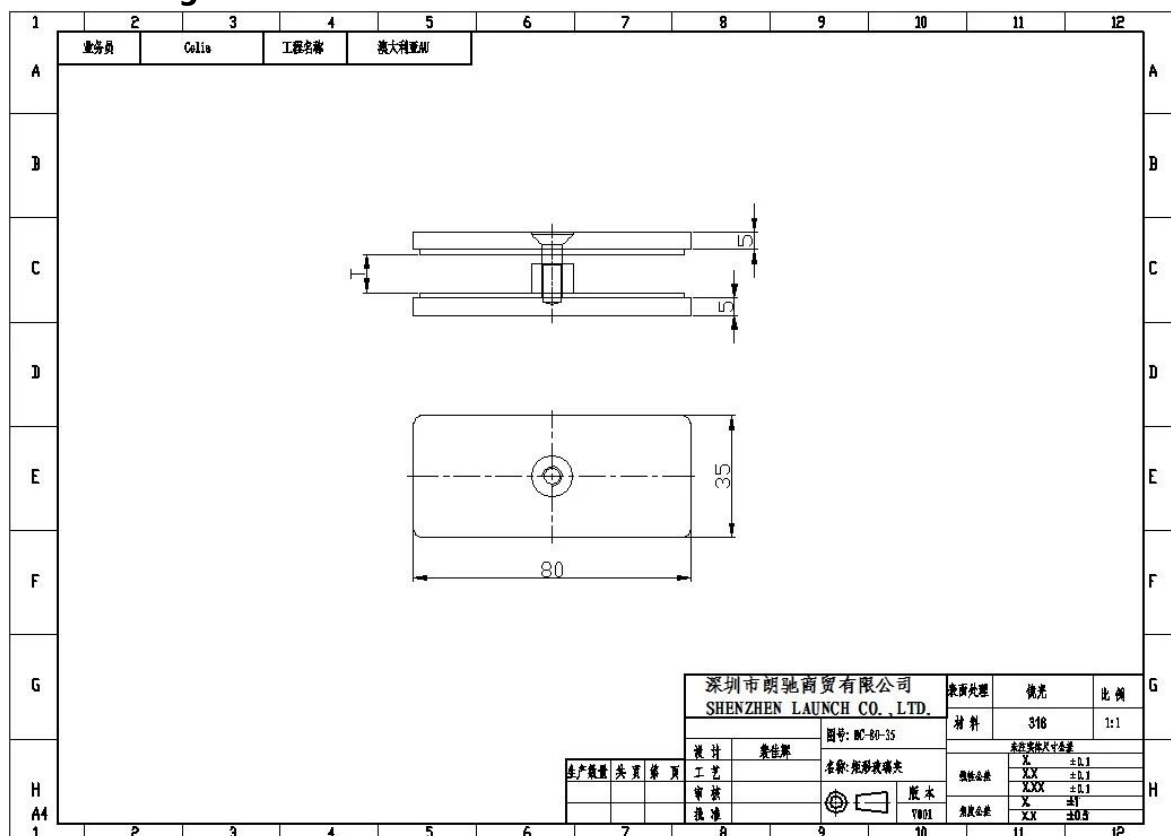
Surface treatment: mirror polished;



Satin brushed



Size drawing:



BC-80*35 is used between the 2 glass panel, to make connection of them.
More stable and safer;

Please see the project as below:

Staircase glass railing with standoff bracket **SF-50**

http://www.chinabalustrade.com/products/frameless-glass-rail-system-stainless-steel-standoff-brackets-for-stairs-and-balconies.html#.VzCd_Pn7w2g



Overall view



This glass clamp is widely used at frameless glass balustrade especially for staircase, deck, balcony and so on, not only commercial but also domestic project.

Thanks for your view, Any needs or question, contact with me freely

⋮

Contact: Joey Lan

Email: sales02@launch-china.cn .

Skype: launch-02 . Mob/Wechat/WhatsApp: 86-18707054903 .