

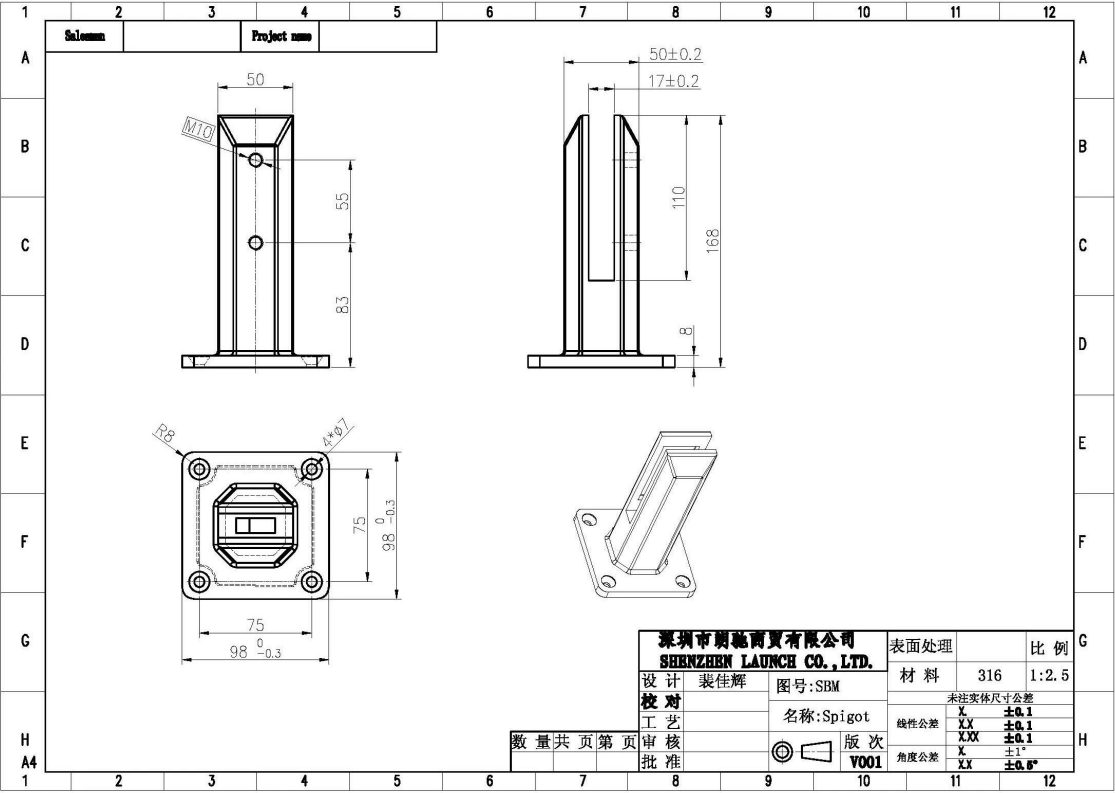
## Stainless Steel 316 Duplex 2205 Frameless Glass Balustrade Spigot

### Quick details:

Product Name	Frameless glass balustrade square spigot
Material	Stainless steel 316 / duplex 2205
Finish	Mirror polished / satin brushed
For Glass Thickness	8-13mm
Height	168mm
Square Base Size	100x100mm
Net Weight	1.577kg/piece
Manufacture Method	Casting (high quality)
Packaging Details	1) One piece into one bubble bag, then into one white box 2) 12 pieces into 365x330x230mm cardboard carton 3) Packing as customers' requirements
Application	Swimming pool fence, balcony glass railing, deck frameless glass railing, staircases handrail design
Certification	Yes. Meet Australia and New Zealand standards
Sample	Available
MOQ	No limited. You can order as per your job requirement.
OEM & ODM Service	Available

### Square Glass Spigot Details

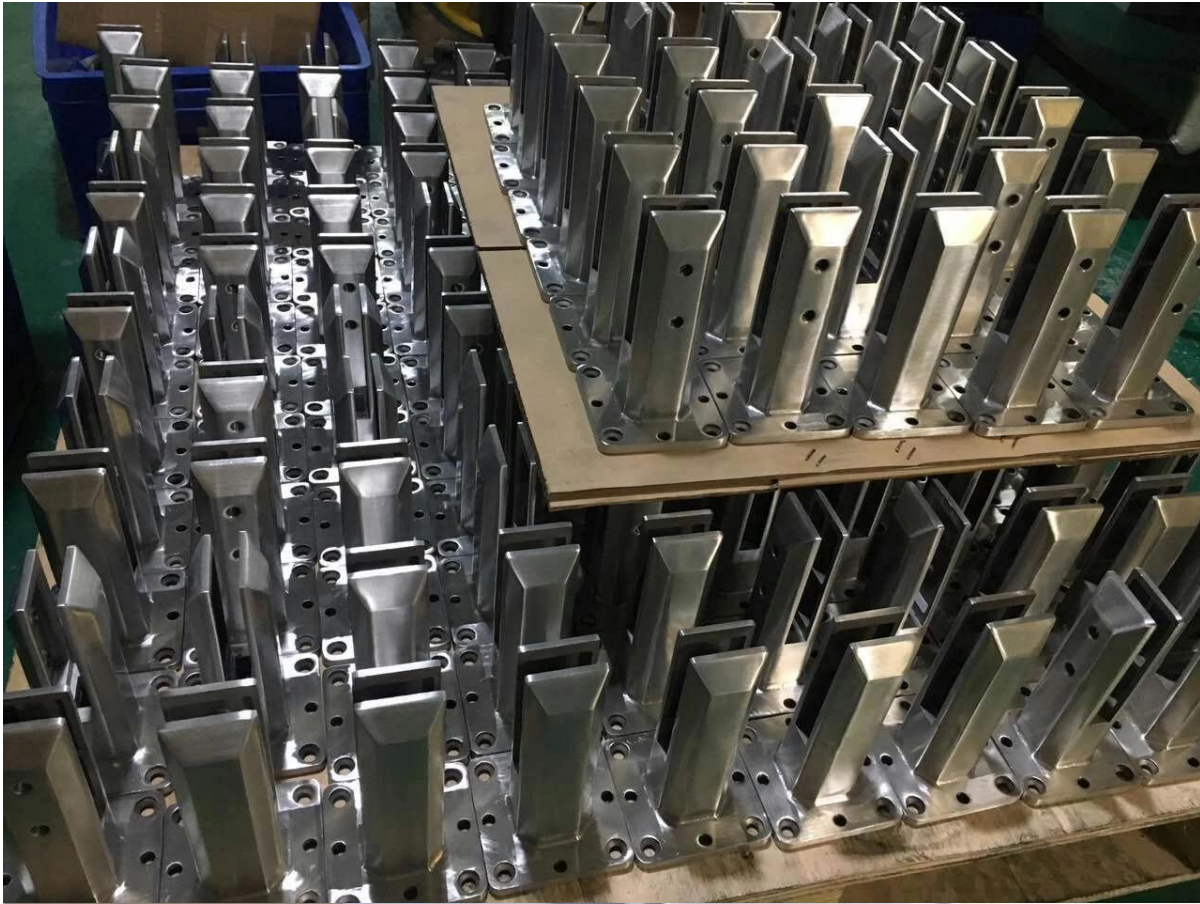
1) Glass spigot technical drawing



2) Square spigot pictures

**KEBIL** 科比奥®





## **Glass Spigot Safety Packaging**

1. One piece into one bubble bag, then into one white box.  
12 pieces into 365x330x230mm cardboard carton.

2. Packing as customers' requirements.



**Frameless Glass Spigot Projects**







Company info:



Shenzhen Launch Co., Ltd was established in 2004, located at Nanshan District, Shenzhen, and one hour by car from Hongkong International Airport. Our main product is high-grade building materials includes stainless steel balustrade post, staircase handrail, balcony guardrail, swimming pool fence and other high-grade building materials. All the products are designed strictly according to the high-end market requirements. We have our own factory in Tangxia Town, Dongguan, has a variety of precision equipment more than 50 sets: CNC lathe, milling machine, punching machine, pipe cutter, argon welder, drilling machine, polisher, etc. which can provide customers with complete product processing services. With the German SPECTRO Spectrometer, we insist on testing every batch of materials to ensure that the material is highly qualified. We also have hardness gauge, secondary element and other test equipment to ensure the products meets customers' requirements.

## ABOUT US

### Our Team





## Contact info:

Email: sales05@launch-china.cn

Skype: launch-05

wechat:13129593615

Mob/whats APP: 0086 13129593615

Your inquire will be reply soon. Thank you for your time.