

stainless steel 316 duplex 2205 frameless glass railing spigot

1. Stainless steel 316 duplex 2205 frameless glass railing spigot description.

Frameless Glass Clamp Railing System

- 1). For 3/8", 1/2", and 9/16" (10, 12, and 13.52 mm) glass
- 2). For Pool Fencing, Balcony, and Deck Applications
- 3). Our Frameless Glass Clamp Railing System provides an almost invisible "frameless" look. No vertical posts are used between the panels of glass; they are solely supported from the bottom by high strength stainless steel clamps. Their quality 316 alloy stainless steel construction provides superior weather resistance.



2. Model No.RBM frameless glass railing spigot

1. Material: Stainless steel 316/duplex 2205.
2. Finish: Satin or mirror polished.
3. For glass thickness: 8-13.52mm.
4. Model No. RBM.



RBM





Model No. : SBM
Material: Stainless steel (AISI 304)
Finish: Polished
For glass thickness: 3-5mm, 6-8mm, 10-12mm

Model No. : SCM
Material: Square core (AISI 304)
Finish: Polished
For glass thickness: 3-5mm, 6-8mm, 10-12mm

Model No. : PSM
Material: Round core (AISI 304)
Finish: Polished
For glass thickness: 3-5mm, 6-8mm, 10-12mm

GLASS LATCH

Model No. : ...
Material: ...
Finish: ...
For glass thickness: ...

Model No. : ...
Material: ...
Finish: ...
For glass thickness: ...

Model No. : ...
Material: ...
Finish: ...
For glass thickness: ...

GLASS SPIGOT



Model No. : SBM	
Square base plate spigot	
Material	Stainless steel 316, 316L, duplex 2205
Finish	Mirror or satin polished
For glass thickness	10mm - 13.52mm



Model No. : SCM	
Square core drill spigot	
Material	Stainless steel 316, 316L, duplex 2205
Finish	Mirror or satin polished
For glass thickness	10mm - 13.52mm



Model No. : RBM	
Round base plate spigot	
Material	Stainless steel 316, 316L, duplex 2205
Finish	Mirror or satin polished
For glass thickness	10mm - 13.52mm



Model No. : SCM-1

Material	Stainless steel 316, 316L, duplex 2205
Finish	Mirror or satin polished
For glass thickness	10mm - 13.52mm

GLASS LATCH



Model No. : GL-90	
Glass to glass latch 90 degree	
Material	Stainless steel 316/316L
Finish	Mirror or satin polished
For glass thickness	8-12mm
Remark	Other degrees available



Model No. : GL-90

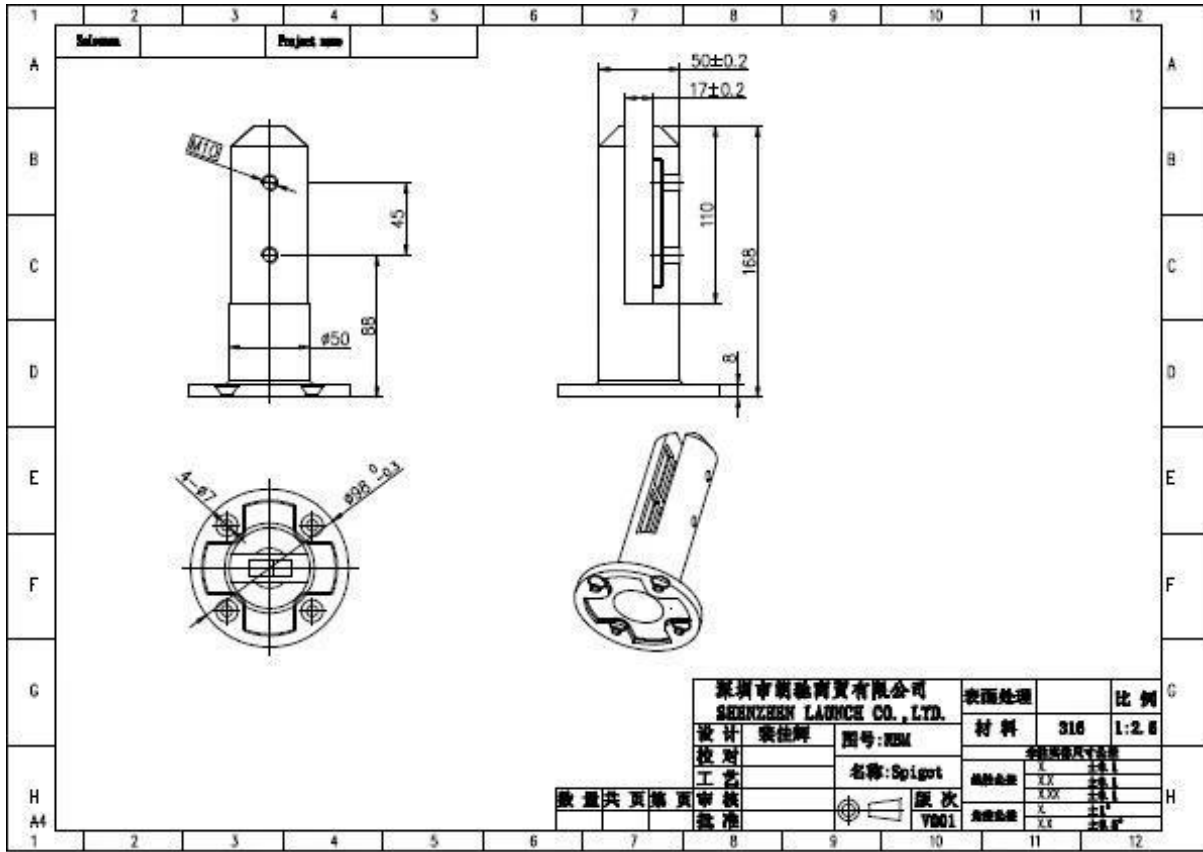
Glass to glass latch 90 degree	
Material	Stainless steel 316/316L
Finish	Mirror or satin polished
For glass thickness	8-12mm
Remark	Other degrees available



Model No. : GL-90

Glass to round glass latch 90 degree	
Material	Stainless steel 316/316L
Finish	Mirror or satin polished
For glass thickness	8-12mm

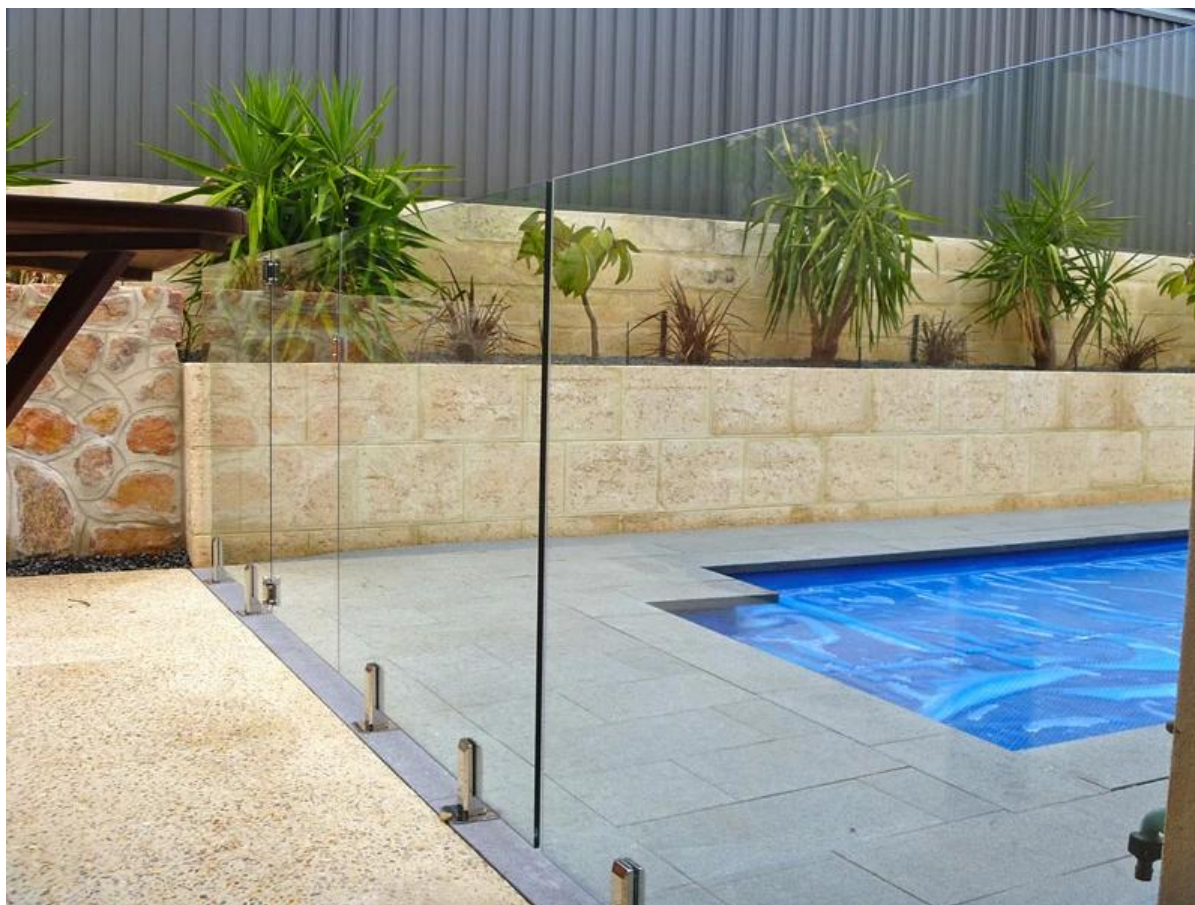




3. Model No. SBM (Square base spigot),
[javascript:void\(0\);/*1469842823954*/](javascript:void(0);/*1469842823954*/)



SBM



Thanks for your visit, Any interested or needs, please contact with me freely :

Joey Lan

Shenzhen Launch Co., Ltd

www.launch-china.cn www.chinabalustrade.com

Email: sales02@launch-china.cn .

Skype: launch-02 . Office: 86-755-86037559 .

Add: B5-003, 5/F-Block 3, Yilida Building, No.1092 Nanshan Road, Nanshan District, Shenzhen, china. Postal code 518054.