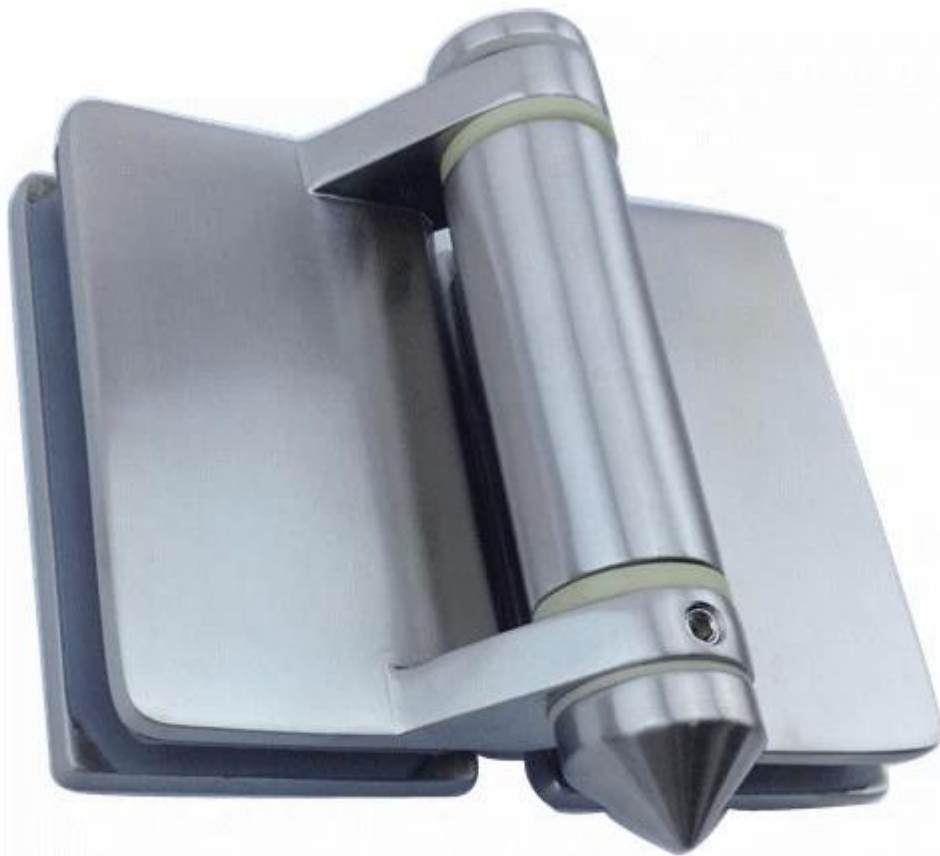


stainless steel 316 glass gate hinges for pool fencing

1. stainless steel 316 glass gate hinges description.

- Material: stainless steel 316
- Finish: Brushed or Mirror polished
- For glass thicknesss: 8mm 10 mm
- Hing Types: glass to glass hinge , glass to post hinge , glass to wall hinge types available
- Made by precision casting, high quality.
- 2 pcs hinges for 1 gate panels
- gate panel within 1200mm wide and 900mm high

2.Model No. G-G2, glass to glass hinge.



G-G2

3.Model No. G-W2, glass to square post / wall hinge.



G-W 2

[4.Model No. G-R2, glass to round post hinge.](#)



G-R2

Thanks for your visit, Any interested or needs, please contact with me freely :

Joey Lan

Shenzhen Launch Co., Ltd

www.launch-china.cn www.chinabalustrade.com

Email: sales02@launch-china.cn .

Skype: launch-02 . Office: 86-755-86037559 .

Add: B5-003, 5/F-Block 3, Yilida Building, No.1092 Nanshan Road, Nanshan District, Shenzhen, china. Postal code 518054.