

Heavy Duty Spring Loaded Stainless Steel 316 Glass to Wall Hinge for Frameless Swimming Pool Fence.

1. Specifications -

Model No.	G-W
Type	Glass To Wall hinge , other types available glass to glass , glass to round post
Material	316 stainless steel
Finish	Matte Black powder coating
Glass thickness	8mm-12mm

2. Photos & drawing-



Spring loaded hinges

Stainless steel spring loaded hinges
 -Made of SS 316
 - For use of 8-12.76mm glass

Maximum door leaf weight : 30 kg /pair
 Maximum door leaf width : 900mm
 Spring can be adjusted for closing speed control .



Part # G-G



Part # G-R



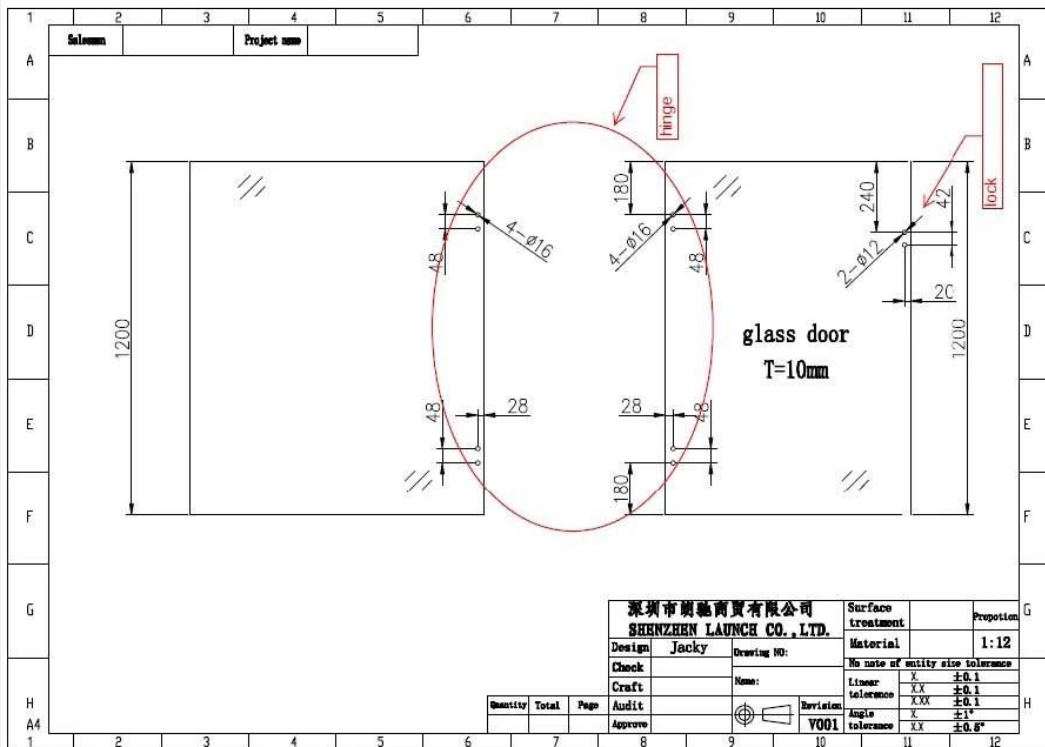
Part # G-W

SHENZHEN LAUNCH CO., LTD

3. Glass hole drawing for glass gate -

Spring loaded hinges

Glass hole drawing for hinge set & glass latch

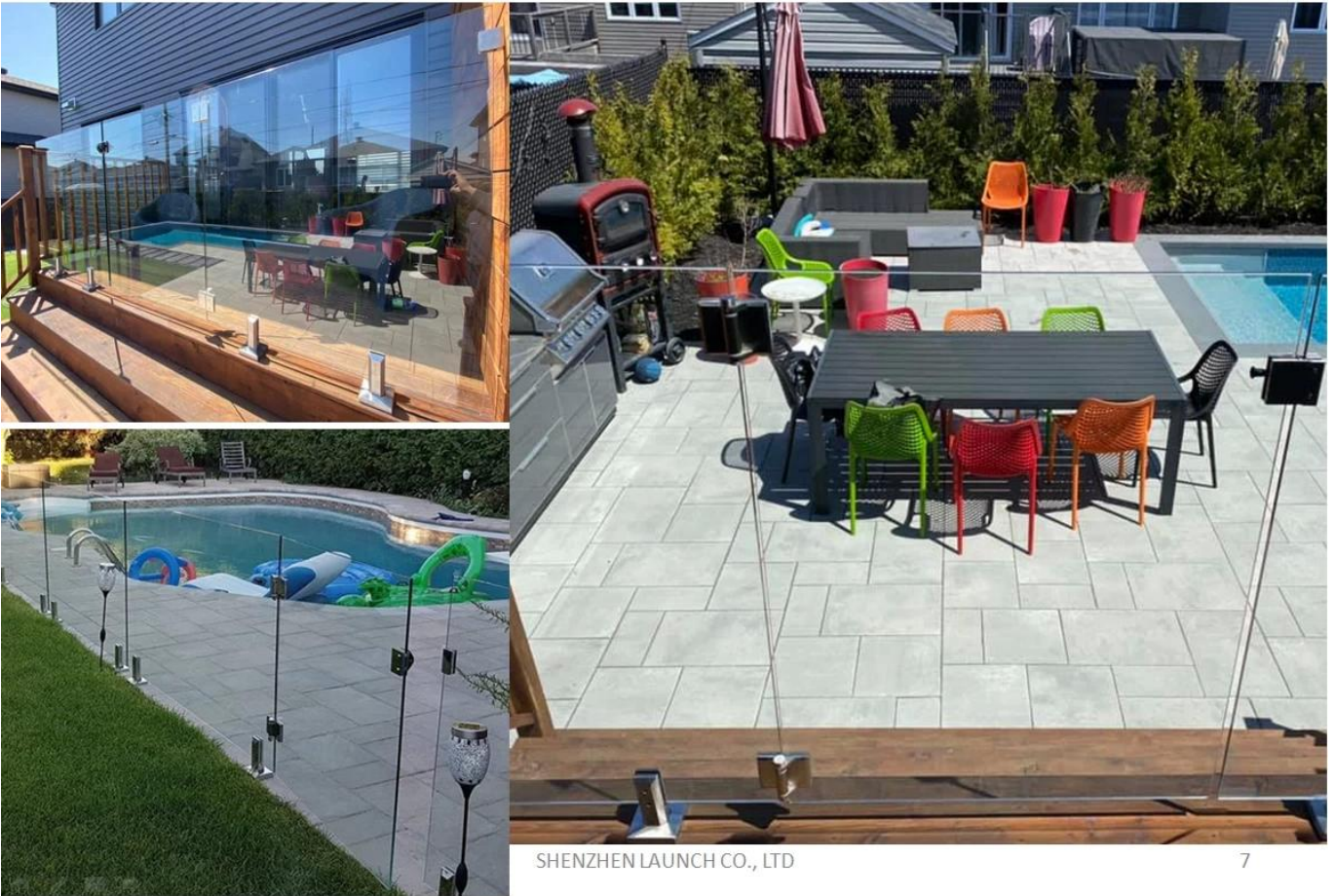


SHENZHEN LAUNCH CO., LTD

4. Swimming pool fence with glass hinges -

Spring loaded hinges

Project photos -



SHENZHEN LAUNCH CO., LTD

7