

Stainless steel 316 glass railing system including stainless steel glass handrail system, frameless glass railing with spigot and standoff, semi frameless glass railing with aluminum post.

They are popularly used in the design of stair, balcony and swimming pool fence.

1. stainless steel glass handrail system

A: stainless steel dia50.8/43mm post

B: post height: 800-1500mm

C: glass thickness: 8-13.52mm

D: handrail post including glass clamp, end cap, tube connector, base and cover
[stainless steel glass standoff for balcony railing china supplier, frameless glass balustrade for balcony china factory](#)



2. frameless glass railing with standoff

A: adjustable standoff to suit 8-19mm tempered glass

B: timber decking and concrete decking standoff available

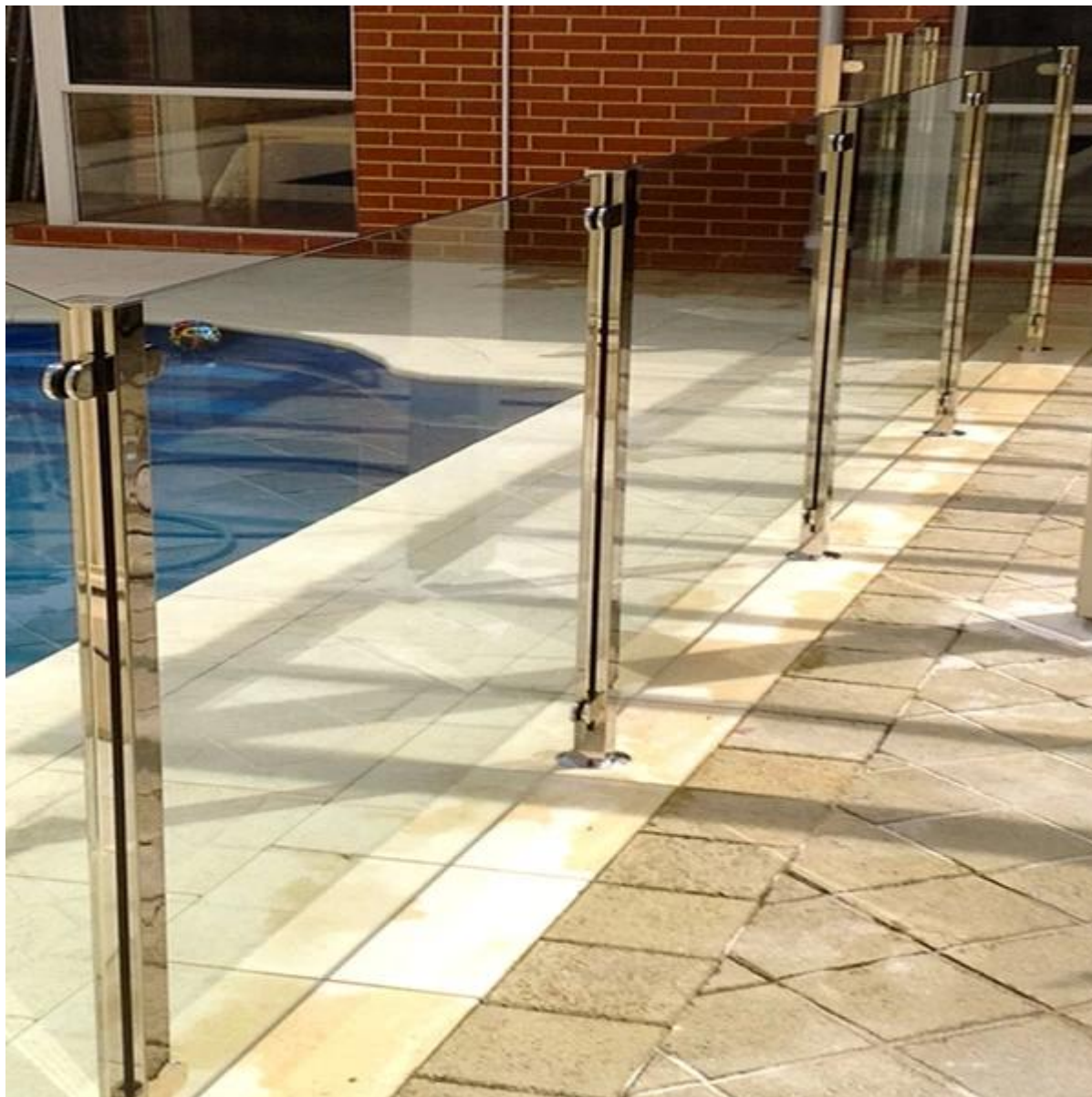
C: available in brushed and mirror finish

[frameless stainless steel glass standoff for balcony, balcony design stainless steel outdoor glass standoff](#)



balcony railing design

[outdoor glass railing for balcony china supplier,china outdoor glass railing for stair](#)



3.frameless glass balustrade with glass spigot

A:base plate and core drill glass spigot in brushed and mirror finish

B:flexible for 10-13.52mm tempered glass

C:usually 2 spigots/glass panel Max1.5*1.2m

D: no holes required in the glass panel

[stainless steel duplex2205 glass spigot for self pool fence china manufacturer,china duplex2205 round base plate glass spigot 12mm](#)



[stainless steel glass spigot factory for balcony design, stainless steel core drill glass spigot supplier for pool fence design](#)



4.semi frameless glass railing with aluminum post

A: for 10-12mm glass

B:base plate and core drill type

C:fittings including snap insert,plastic insert,base,cap and cover ring

Direction:

One way end post;

Two way 90 degree post;

Two way 180 degree post;

Two way 135 degree post;

[china supplier semiframeless glass railing with aluminum post for swimming pool fence](#)

