

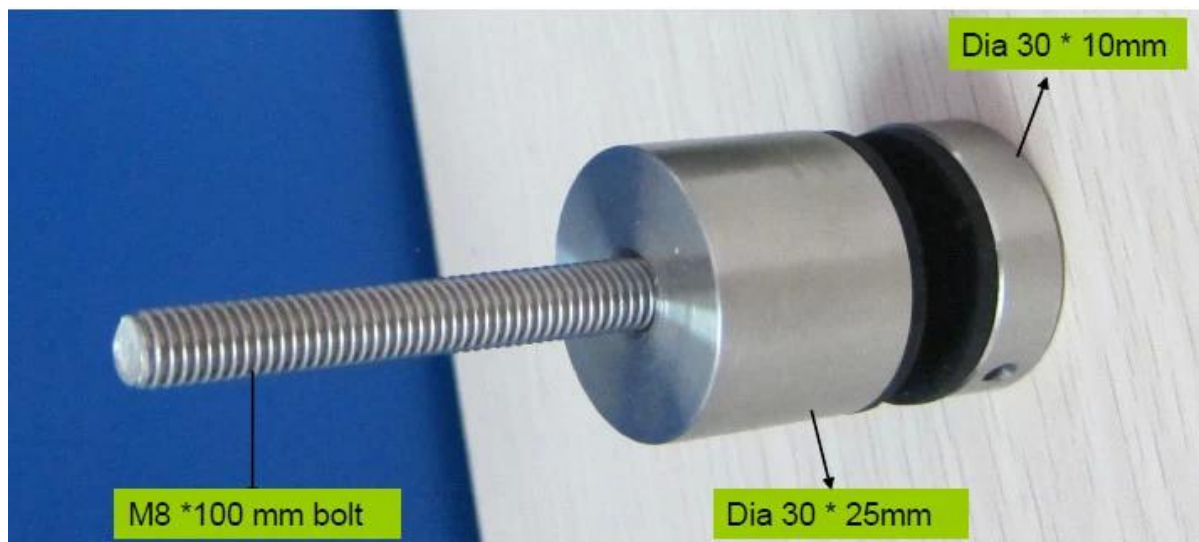
stainless steel 316 standoff glass support brackets glass fastener hardware

Glass support brackets description:

- Material: Stainless steel 304/316
- Finish: Satin or mirror polished
- For glass thickness: 6-19mm thickness
- Solid, high quality, rubber gasket included
- **Model No.SF-30:** 30*10mm cap , 30*25mm body , M8*100 bolt, mount to concrete / M8*50 bolt, mount to wood .
- **Model No.SF-50:** 50*12mm cap , 50*30mm body , M12*120 bolt, mount to concrete / M12*72 bolt, mount to wood .
- **Model No.SF-50T:** one set includes two pieces of standoffs and one piece of stainless steel plate 200x100mm size .

Stainless steel standoff Model No. & project photos□

1. Model No. SF-30 glass support brackets .



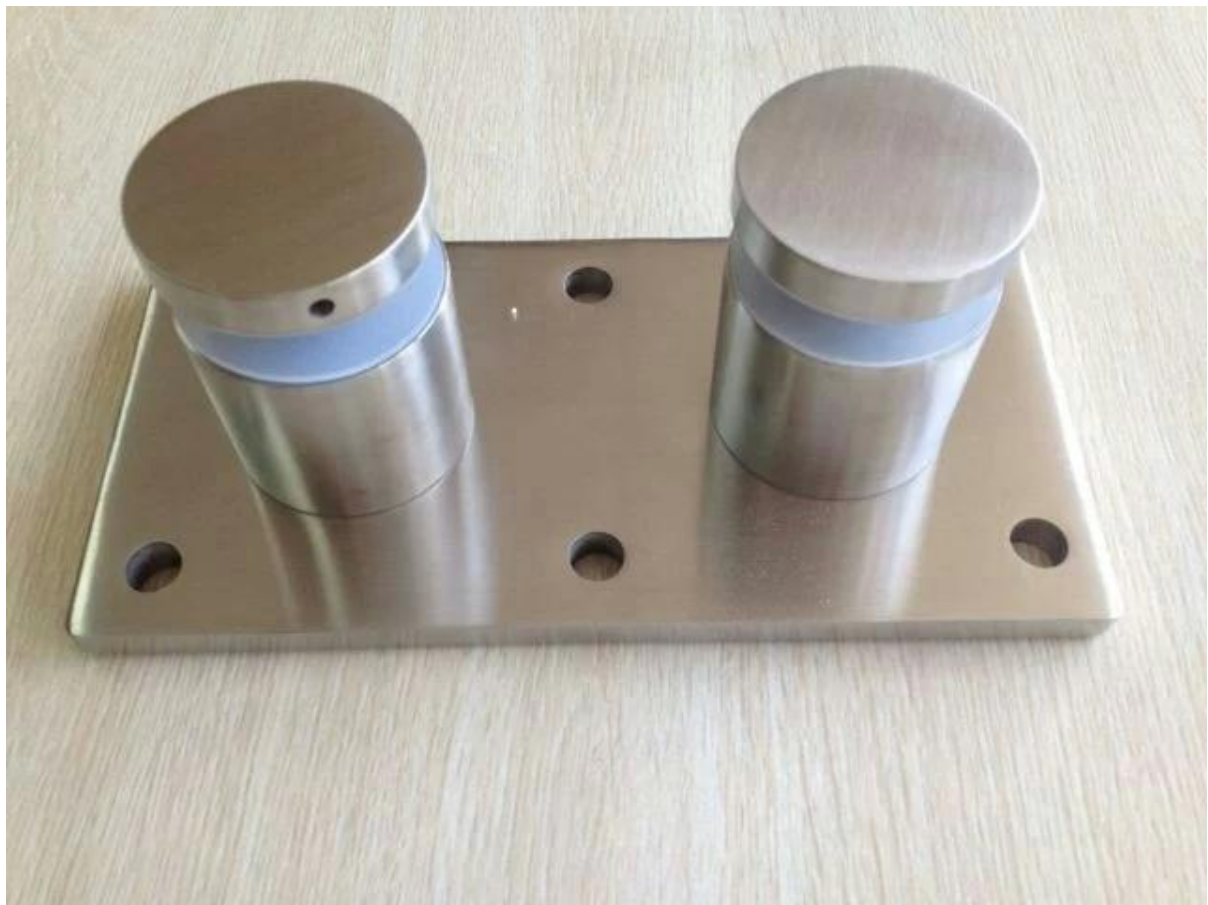
Stainless steel 316 standoff Lag screw type.



2. Model No. SF-50 glass support brackets .



3. Model No. SF-50T glass support brackets .



4. stainless steel 316 standoff glass support brackets glass fastener hardware

project photos:

1). stainless steel 316 standoff glass support brackets glass fastener hardware deck glass railing design



2).stainless steel 316 standoff glass support brackets glass fastener hardware staircase glass railing design



3).stainless steel 316 standoff glass support brackets glass fastener hardware indoor corridor glass railing design



Thanks for your visit, Any interested or needs, please contact with me freely :

Joey Lan

Shenzhen Launch Co., Ltd

www.launch-china.cn www.chinabalustrade.com

Email: sales02@launch-china.cn.

Skype: launch-02. Office: 86-755-86037559.

Add: B5-003, 5/F-Block 3, Yilida Building, No.1092 Nanshan Road, Nanshan District, Shenzhen, china. Postal code 518054.

