

stainless steel 316L frameless glass balcony railing minimal profile capping rail

1.Minimal profile capping rail description ,

Material	stainless steel 316L
Finish	Brushed or Mirror polished
Dimension	1. Round shape: dia 25.4mm, groove 14*14mm, 5.8 meter per length, or as per your requirement. 2. Square shape: 25*20mm, groove 14*14mm, 5.8 meter per length, or as per your requirement.
For glass thickness	10-13.52mm
Rail fittings	180 degree connector, 90 degree connector, wall to rail connector bracket, end cap
position	deck railings, porch railings, balcony railing, frameless spigot glass railing, swimming pool fence railings etc.

Square type balustrades top rails ,



20*25mm slot handrail

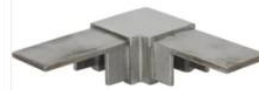
5.8 m per length



180 degree joiner



90 degree joiner



Vertical adjustable joiner



Horizontal I adjustable joiner



Wall to handrail joiner



End cap



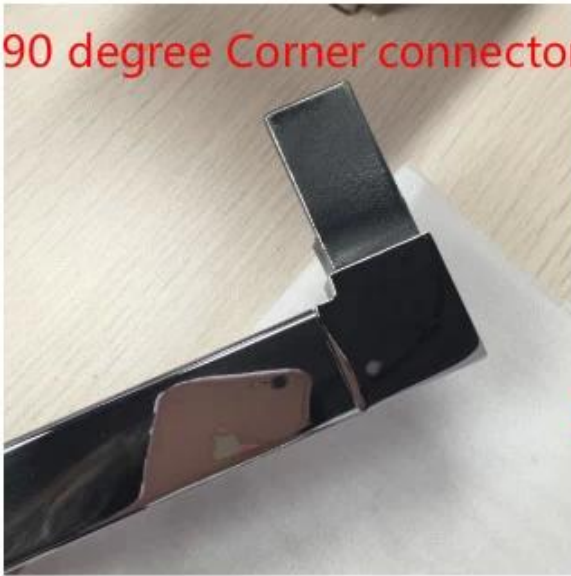
Adjustable connector fittings :

KEBIL 科比奥®





90 degree Corner connector



180 degree middle connector



End Cap



Wall Bracket

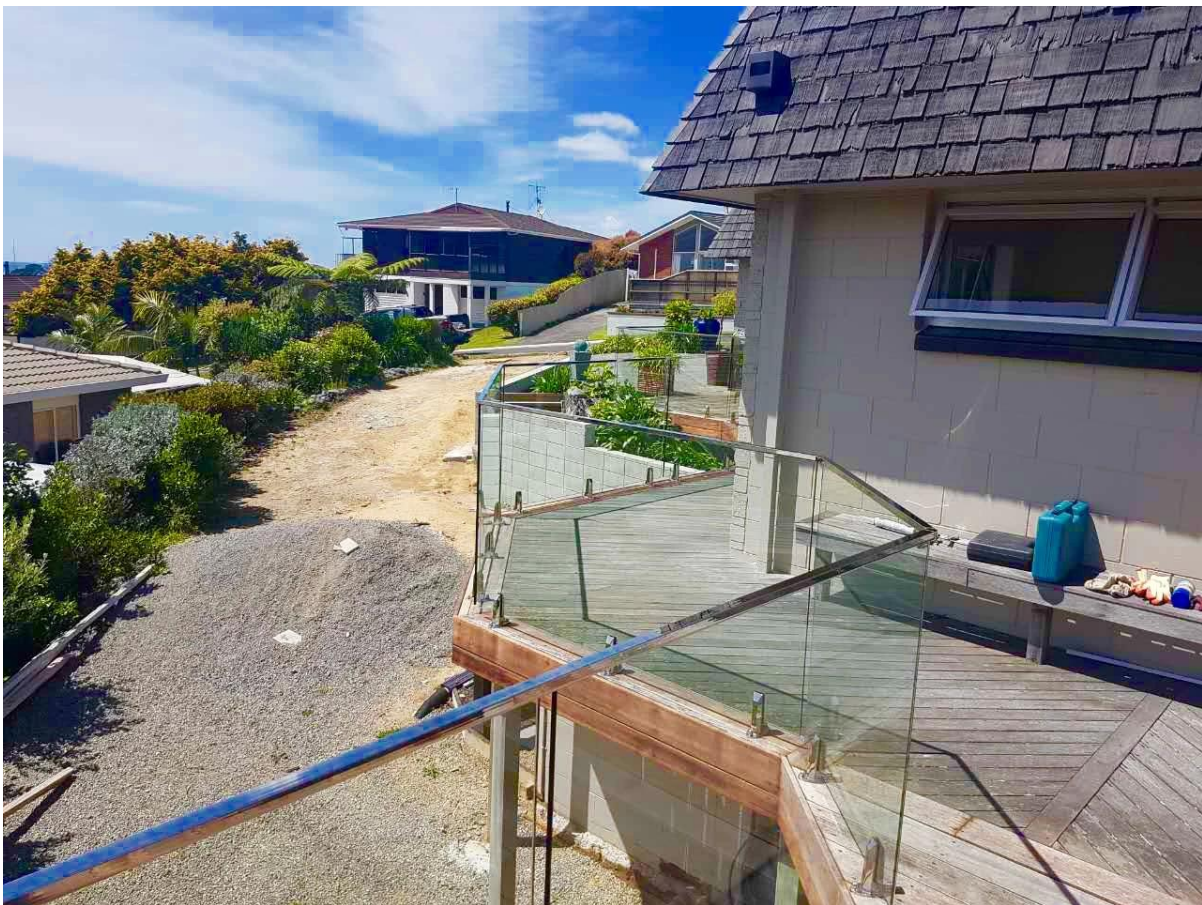


Round type balustrades top rails :



2. Stainless steel 316L frameless glass balcony railing minimal profile capping rail project :

1) Outdoor balcony frameless glass railing design

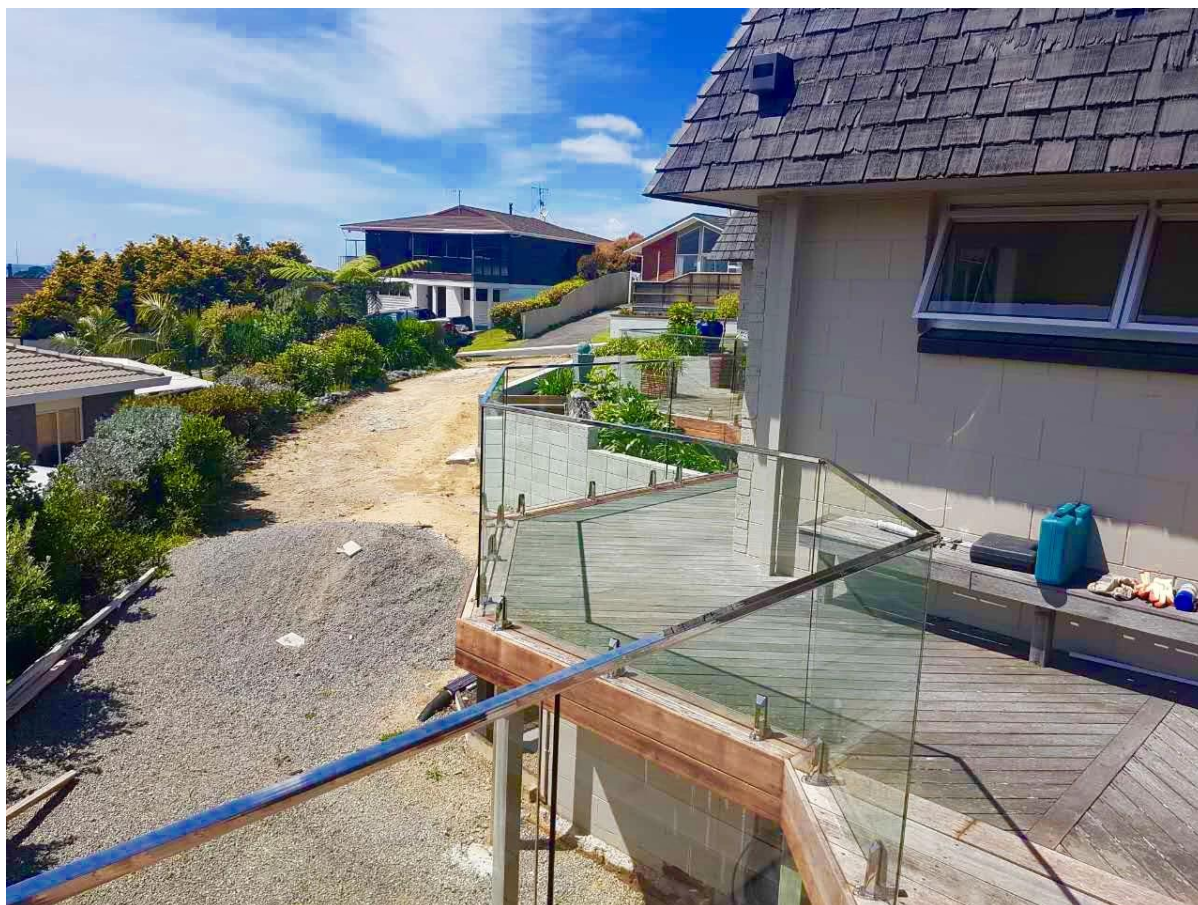


2) Frameless staircase glass railing





3) Outdoor decking glass railing project



Thanks for your visit, Any interested, please contact with me freely :

Email: sales02@launch-china.cn . Skype: [launch-02](https://www.skype.com/name/launch-02) .

