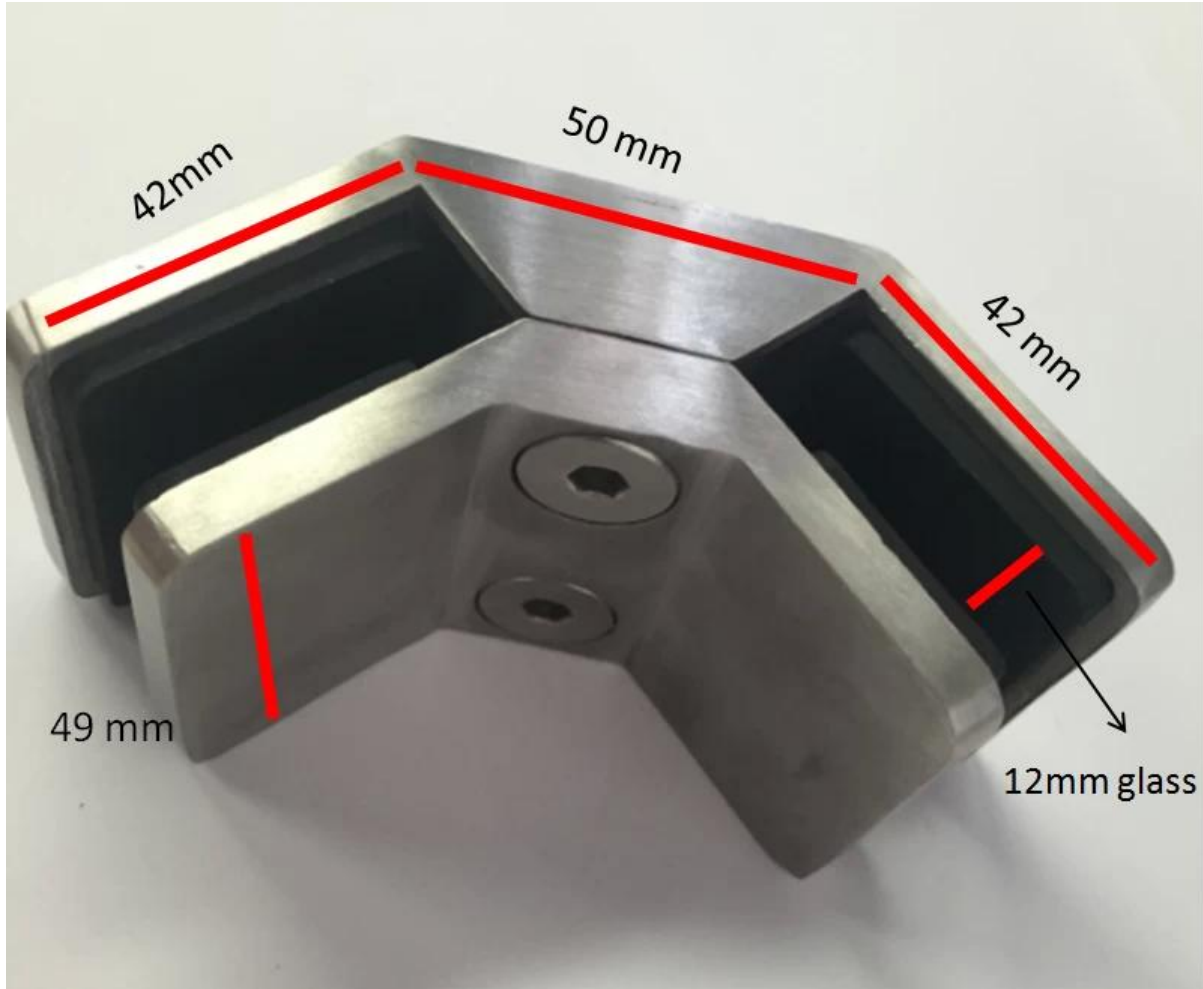


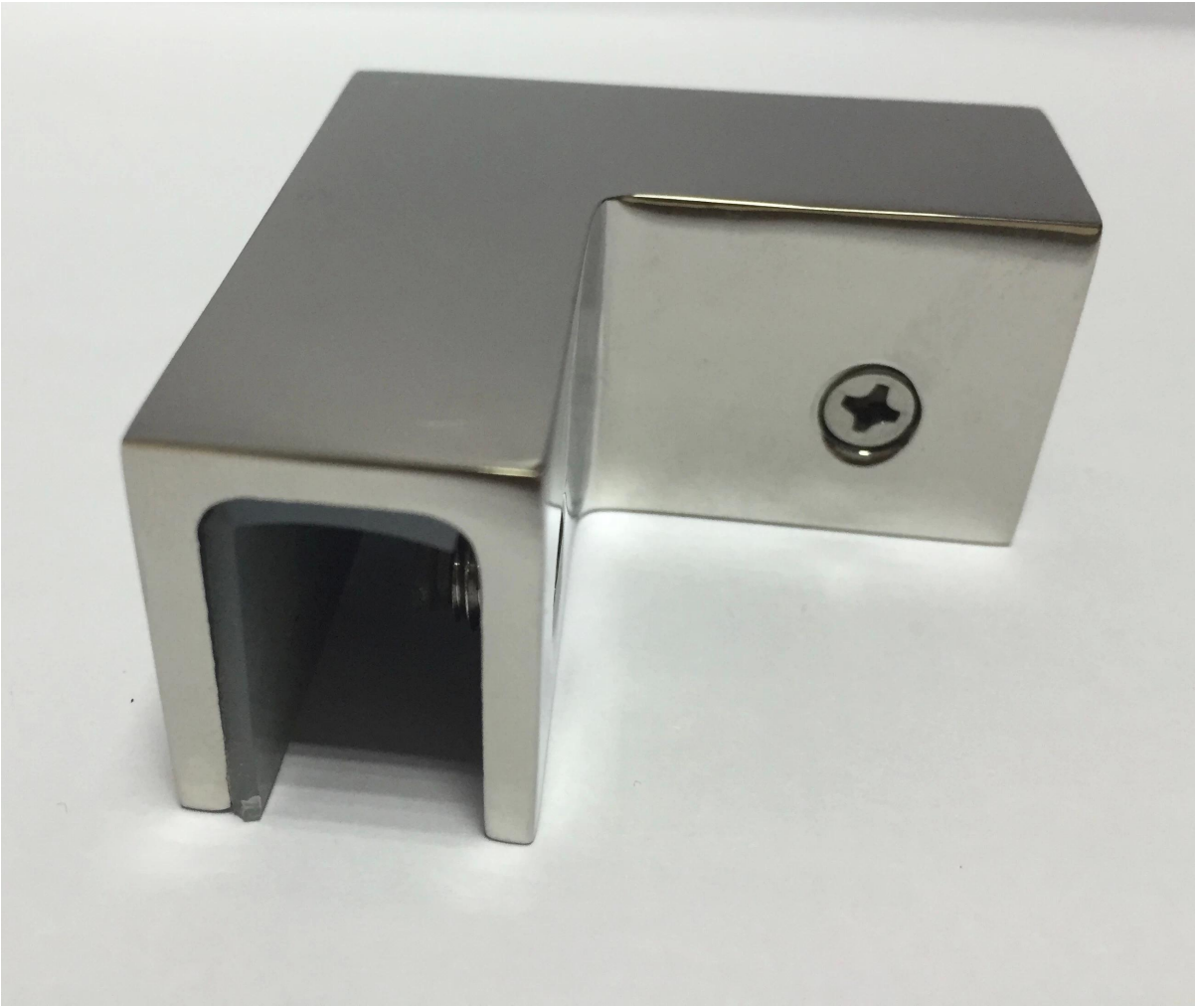
## 1. Description

- Material: stainless steel 304/316
- Usage: 90 degree corner glass clamp
- Size: please see below drawing
- For glass thickness: 12mm

## 2. Product picture



[Associated products please click below picture](#)













### 3.Delivery & Packing

Delivery: 3-5 days by express. 10-15 days by shipping

Packing: one pc into one plastic bag. 10 pcs into one box.

Lead time: about 20 days after payment. ( It depent on quantity)



packing	plastic bag+box+carton
production lead time	30-45 days ; also depending on your qty.
Shippment	 
	 
	 
payment	 

#### 4. Factory & Certification





## 5. Customers





**build &  
renovating  
expo**

Friday 4 July - Sunday 6 July 2014  
Melbourne Exhibition Centre



## 6.Contact



KEBIL 科比奥®

深圳市朗驰商贸有限公司  
SHENZHEN LAUNCH CO., LTD.

朗驰国际有限公司  
LAUNCH INTERNATIONAL LIMITED.

**董 萍** Doris Dong

Senior Sales Representative

☎ (86) 135 3050 6265

---

深圳市南山区南山大道1092号亿利达大厦B区3栋5003

Room 5003, Building 3, Yilida Building, No.1092  
Nanshan Road, Nanshan District, Shenzhen, China  
postal code 518054

---

☎ (86-755) 8603 7559

☎ (86-755) 8637 2611

✉ sales04@launch-china.cn

🌐 www.launch-china.com

www.chinabalustrade.com

Thank you for visiting. Please do not heasite to contact us for factory direct price and professional advises.