

## stainless steel D shape round glass clamp for 8-12mm tempered glass

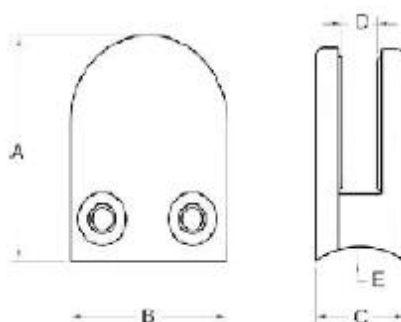
### 1. stainless steel D shape round glass clamp specification :

- Material: Stainless steel 304/316;
- For glass thickness: 8-12mm;
- Finish: Brushed or mirror polished.
- Model No.: G103R, G104R, G105R and G106R.
- Glass clamp is used to fix on post or wall to support glass panels .



### 2. stainless steel D shape round glass clamp list:

Material	Stainless steel 304/ 316
Finish	Satin / mirror polished
For glass thickness	6mm -13.52mm



Model No.	A	B	C	D	E
G103	50	40	22	8	0
G104	50	40	26	12	0
G105	55	45	28	14	0
G103R	52	40	22	8	R-21.5
G104R	52	40	26	12	R-21.5
G105R	58	45	28	14	R-25.4



**G102R**



**G103R**



3.stainless steel D shape round glass clamp installed:





Thanks for your visit, Any interested or needs, please kindly contact with me freely :

Joey Lan

**Shenzhen Launch Co., Ltd**

[www.launch-china.com](http://www.launch-china.com) [www.chinabalustrade.com](http://www.chinabalustrade.com) [www.launch-china.en.alibaba.com](http://www.launch-china.en.alibaba.com)

Email: [sales02@launch-china.cn](mailto:sales02@launch-china.cn) .

Skype: launch-02 . Office: 86-755-86037559 .

