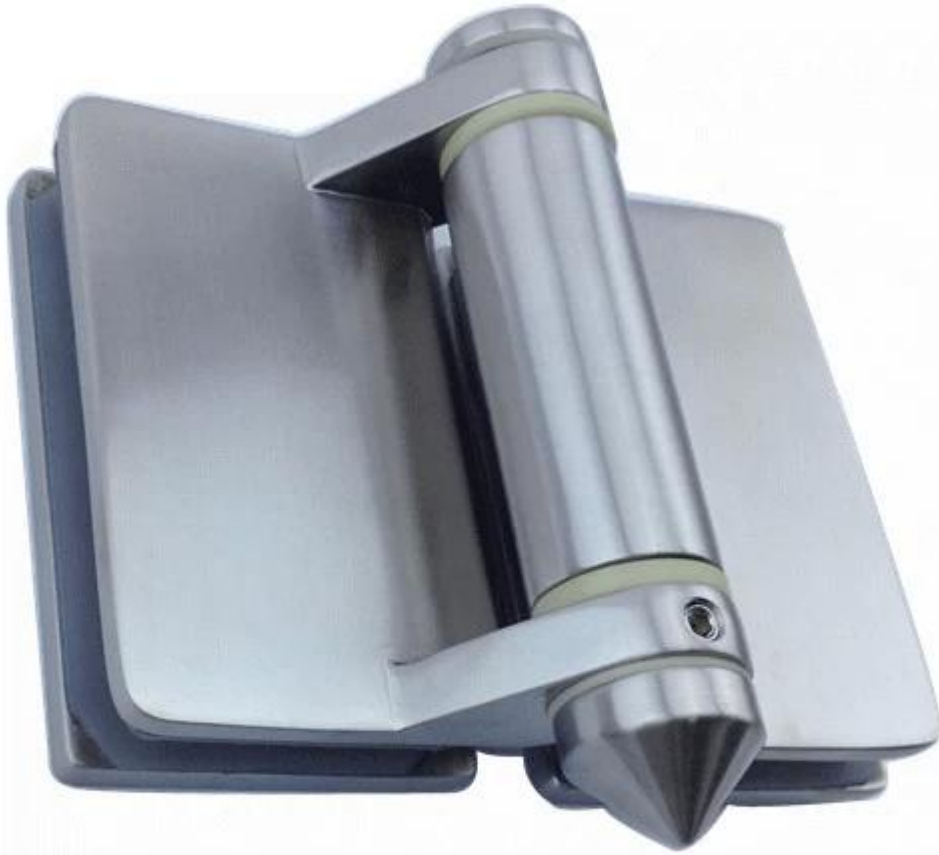


**Shenzhen Launch company have a range of balustrading designs to choose from. Decks, balconies, stairs, privacy screens and Swimming Pools. Materials used include powder coated aluminum, stainless steel and toughened glass.**



**G-G2**

glass pool gate hinge,glass door hinge,self close hinge



soft close hinge for 10-12mm pool fence gate



**Installation instruction :**



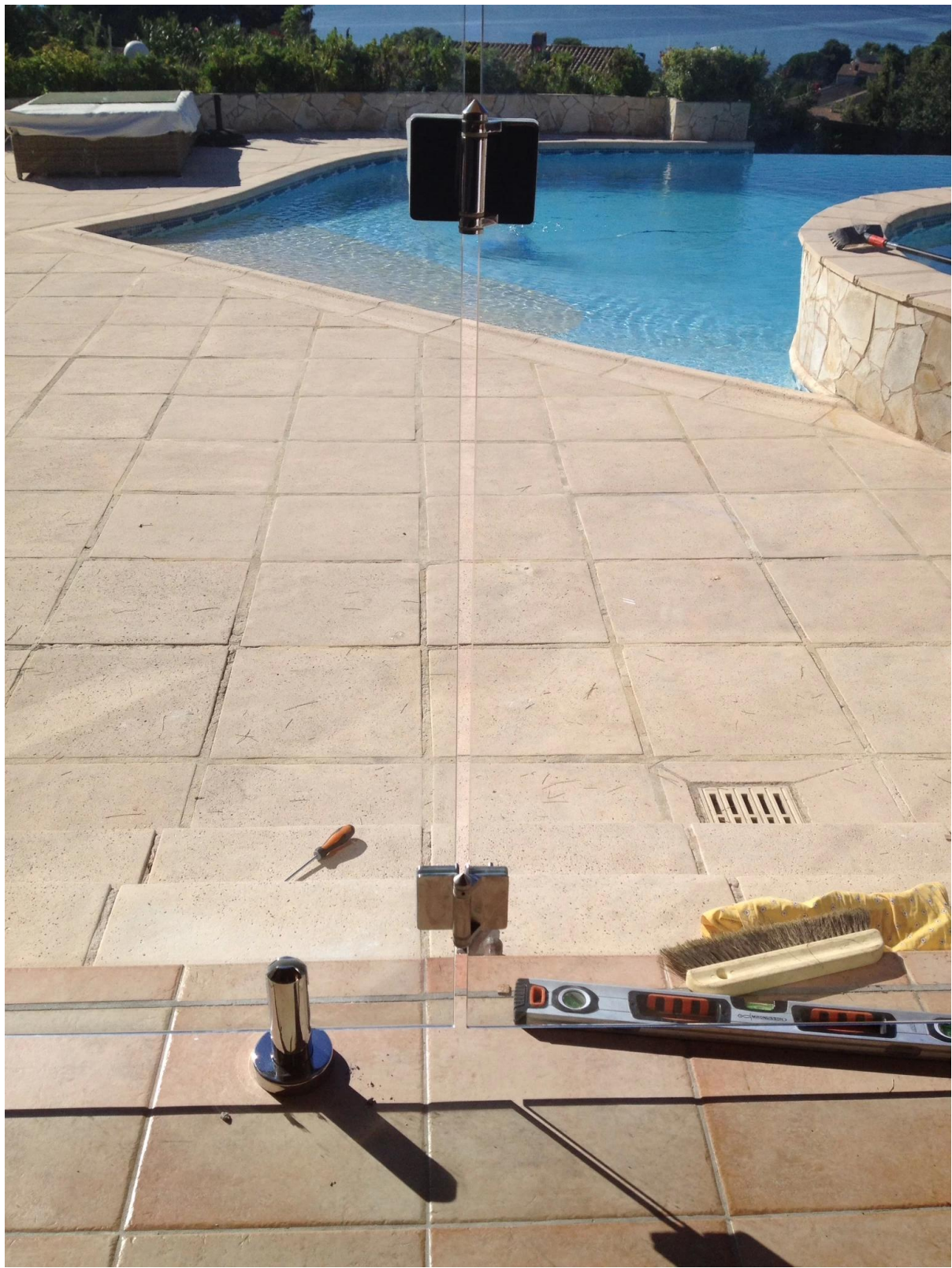
one latch and two hinges for a gate



two spigot for a panel







**Hinge package**



### **Other spigot types available:**

stainless steel 316 / duplex 2206 square core drilled pool fence glass spigot , SCM

[stainless steel 316 / duplex 2206 square core drilled pool fence glass spigot , SCM](#)

stainless steel 316 / duplex 2205 round core drilled pool fence glass spigot. RCM

stainless steel 316 round core drill glass spigot for swimming pool fence china factory, factory direct round core drill glass spigot for balcony

stainless steel 316 / duplex 2205 square base plate pool fence glass spigot. SRM

stainless steel 316 spigot, frameless glass fencing spigot, square base plate spigot

stainless steel 316 / duplex 2205 round base plate pool fence glass spigot. RRM

round glass spigot with base plate, pool fence glass spigot, shenzhen launch pool fence hardware



### **Glass latch link:**

[stainless steel heavy duty latch, spring loaded glass gate latch, pool fence gate latch](#)





#### Model no. : GL-90

Glass to glass latch 90 degree

Material	Stainless steel 316/316L
Finish	Mirror or satin polished
For glass thickness	8-12mm

Remark : In swing & out swing both available



#### Model no. : GL-180

Glass to glass latch 180 degree

Material	Stainless steel 316/316L
Finish	Mirror or satin polished
For glass thickness	8-12mm

Remark : Other degrees available according to your requirement



#### Model no. : GL-W

Glass to wall / square post latch

Material	Stainless steel 316L
Finish	Mirror or satin polished
For glass thickness	8-12mm



#### Model no. : GL-P

Glass to round post latch

Material	Stainless steel 316L
Finish	Mirror or satin polished
For glass thickness	8-12mm

## Not exactly what you are looking for?

Please go to our [Homepage](#), and we will help you to find the product you need.

or [Contact us](#) directly for Recommendations.

Thanks for visiting!

Any inquiry or question, please leave me message. You will get feedback within 24 hours.