

## stainless steel balustrade accessories glass mounting clamp

Glass mounting clamp Spec. :

Material: Stainless steel 304/316;

For glass thickness: 8-12mm;

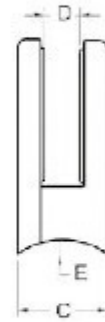
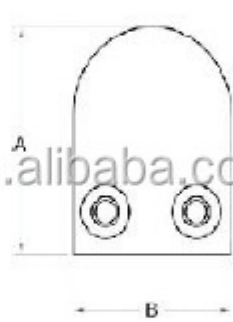
Finish: Satin or mirror polished.

Model No.: G103, G104, G105 .

[1. Round shape glass clamp list:](#)

<http://www.chinabalustrade.com>

Material	Stainless steel 304/ 316
Finish	Satin / mirror polished
For glass thickness	6mm -13.52mm



Model No.	A	B	C	D	E
G103	50	40	22	8	0
G104	50	40	26	12	0
G105	55	45	28	14	0
G103R	52	40	22	8	R-21.5
G104R	52	40	26	12	R-21.5
G105R	58	45	28	14	R-25.4





2. Round shape glass clamp project FYI:







Thanks for your visit, Any interested or needs, please kindly contact with me freely :

Contact: Joey Lan

Skype: launch-02.

Email: [sales02@launch-china.cn](mailto:sales02@launch-china.cn) .