

stainless steel balustrades top rails for 8-13.52mm glass

1. stainless steel balustrades top rails description,

Material: stainless steel 304/316/316L

Finish: Brushed or Mirror polished

For glass thickness : 8-13.52mm thickness

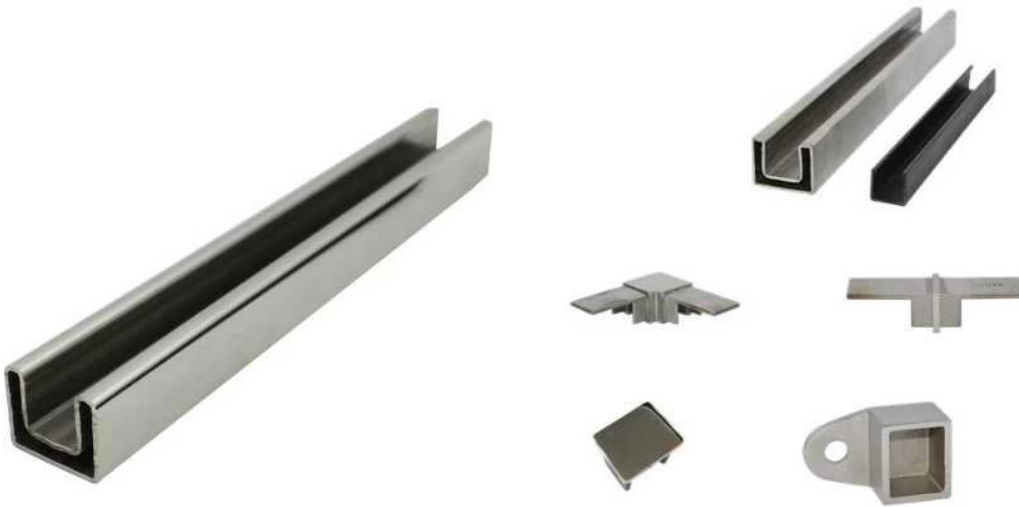
Dimension: Square shape, 25\*20mm, groove 14\*14mm,

5.8 meter per length , or as per your requirement cut into sections



2. stainless steel balustrades top rails and fittings details:

Slot handrail and fittings



Square slot handrail series

stainless steel balustrades top rails fittings photos,

90 degree Corner connector



180 degree middle connector



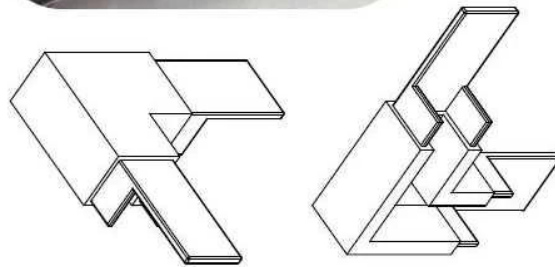
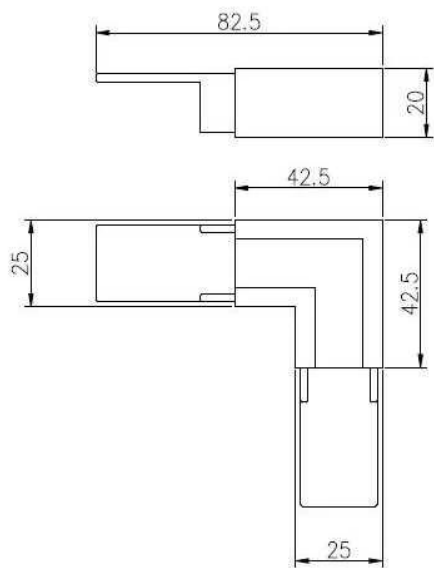
End Cap



Wall Bracket

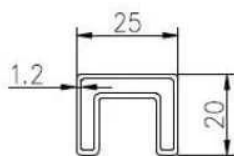


## 90 degree connector drawings

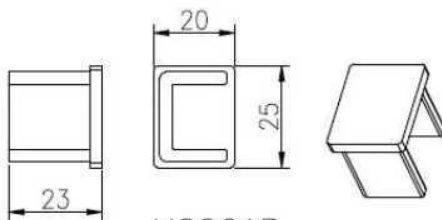


MSQC90

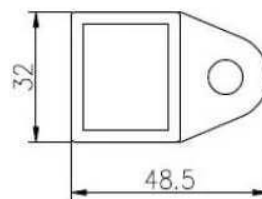
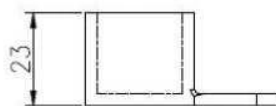
## Slot tube handrail + end cap + wall bracket connector drawings



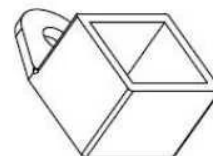
25\*20 tube



MSQCAP

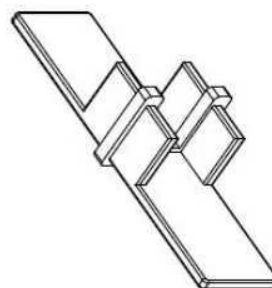
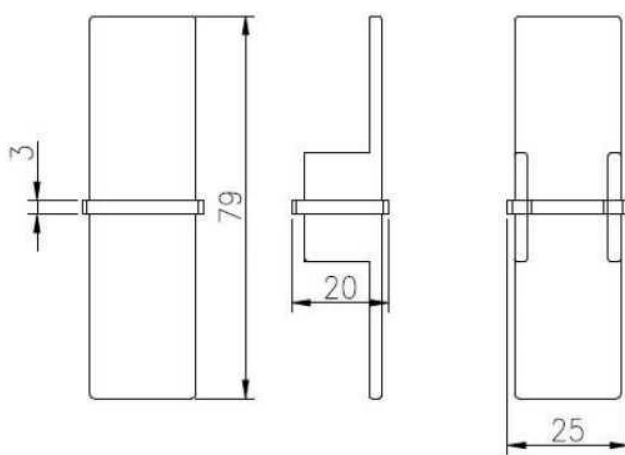


MSQCW





180 degree connector drawings



MSQC180

3. stainless steel balustrades top rails project:









4. Round shape diameter 25.4mm stainless steel balustrades top rails.







**mini top rail**



**square top raip fittings**



**[www.launch-china.cn](http://www.launch-china.cn)**

Thanks for your visit, Any interested or needs, please contact with me freely :

Joey Lan

**Shenzhen Launch Co., Ltd**

[www.launch-china.com](http://www.launch-china.com) [www.launch-china.en.alibaba.com](http://www.launch-china.en.alibaba.com) [www.chinabalustrade.com](http://www.chinabalustrade.com)

Email: [sales02@launch-china.cn](mailto:sales02@launch-china.cn) .

Skype: launch-02 . Office: 86-755-86037559 .