

## Stainless Steel Glass Clamps For Balustrade post fitting clamps

### 1. Specification :

- Material: Stainless steel 304/316;
- For glass thickness: 8-12mm;
- Finish: Satin or mirror polished.
- Model No.: G102, G103, G104, G105 and G106 etc .

### Specifications of all glass clamps in our company

Drawing	Picture	Ref.	A	B	C	D	E
		G108	55	55	25	11	0
		G108R	58	55	30	11	R25.4
		G101	51	41	25	11	0
		G101R	55	41	25	11	R21.5/R25.4
		G102	44	44	25	11	0
		G102R	48	44	25	11	R21.5/R25.4
		G103	50	40	22	8	0
		G104	50	40	26	12	0
		G105	54	45	28	14	0
		G107	63	45	28	14	0
		G103R	52	40	22	8	R21.5
		G104R	52	40	26	12	R21.5
		G105R	58	45	28	14	R21.5/R25.4
		G107R	66	45	28	14	R21.5/R25.4
		G106	50	40	25	12	0
		G106R	52	40	25	12	R21.5/R25.4







2. Corner 90 degree glass clamp, Model No. CB-90 :



CB-90



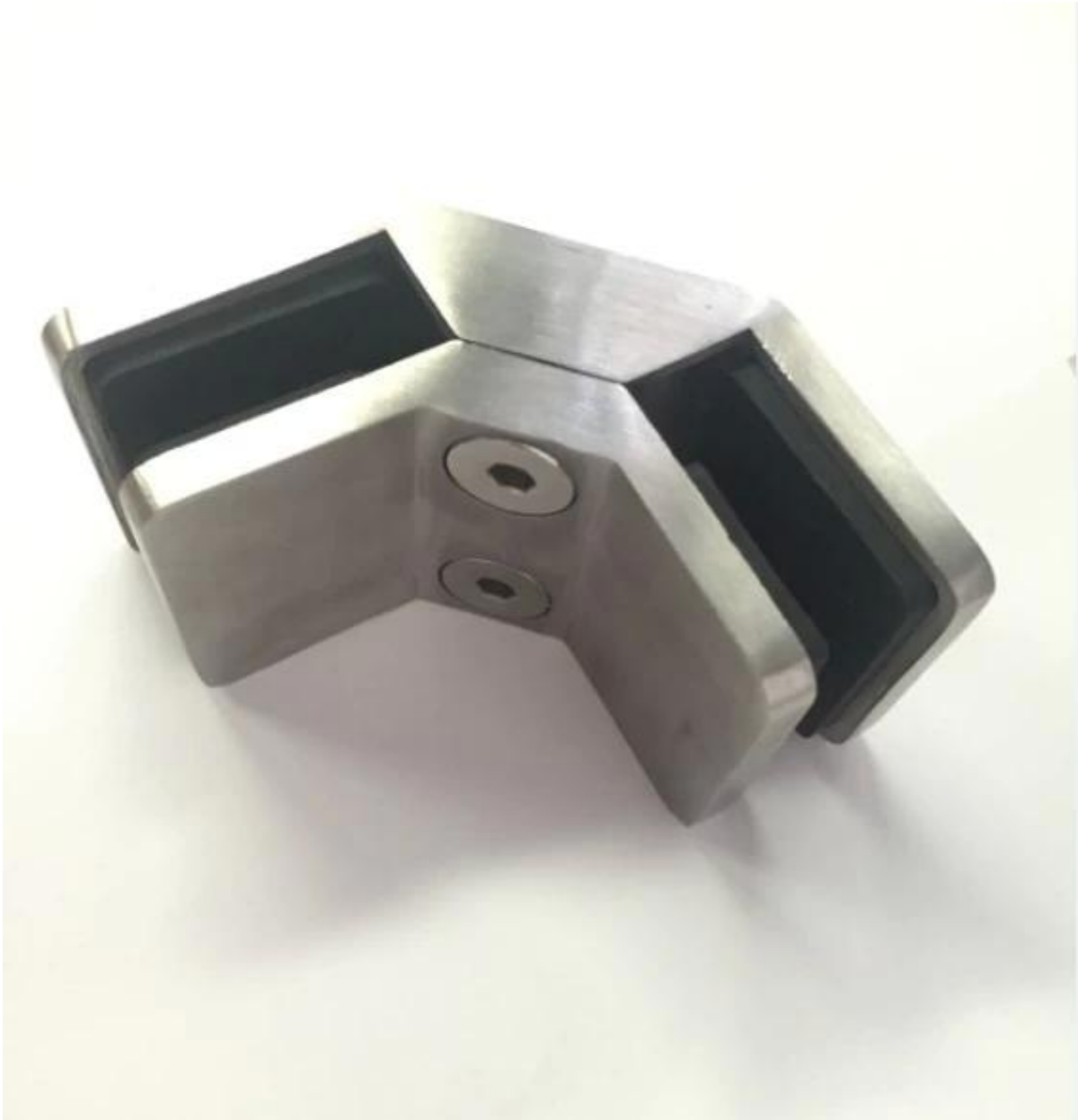




3. Corner 90 degree glass clamp, Model No. PV-90 :

**KEBIL** 科比奥®





4. Middle 180 degree glass clamp BC- 80 x 35 :





All kinds glass clamps in one picture:





**G102**



**G103/G104**



**G105**



**G108R**



**PV-90**



**CB-180**



**BC-60**



**BC-80x35**



**CB-90**

Thanks for your visit, Any interest, please contact with us freely :

Email: [sales05@launch-china.cn](mailto:sales05@launch-china.cn)