

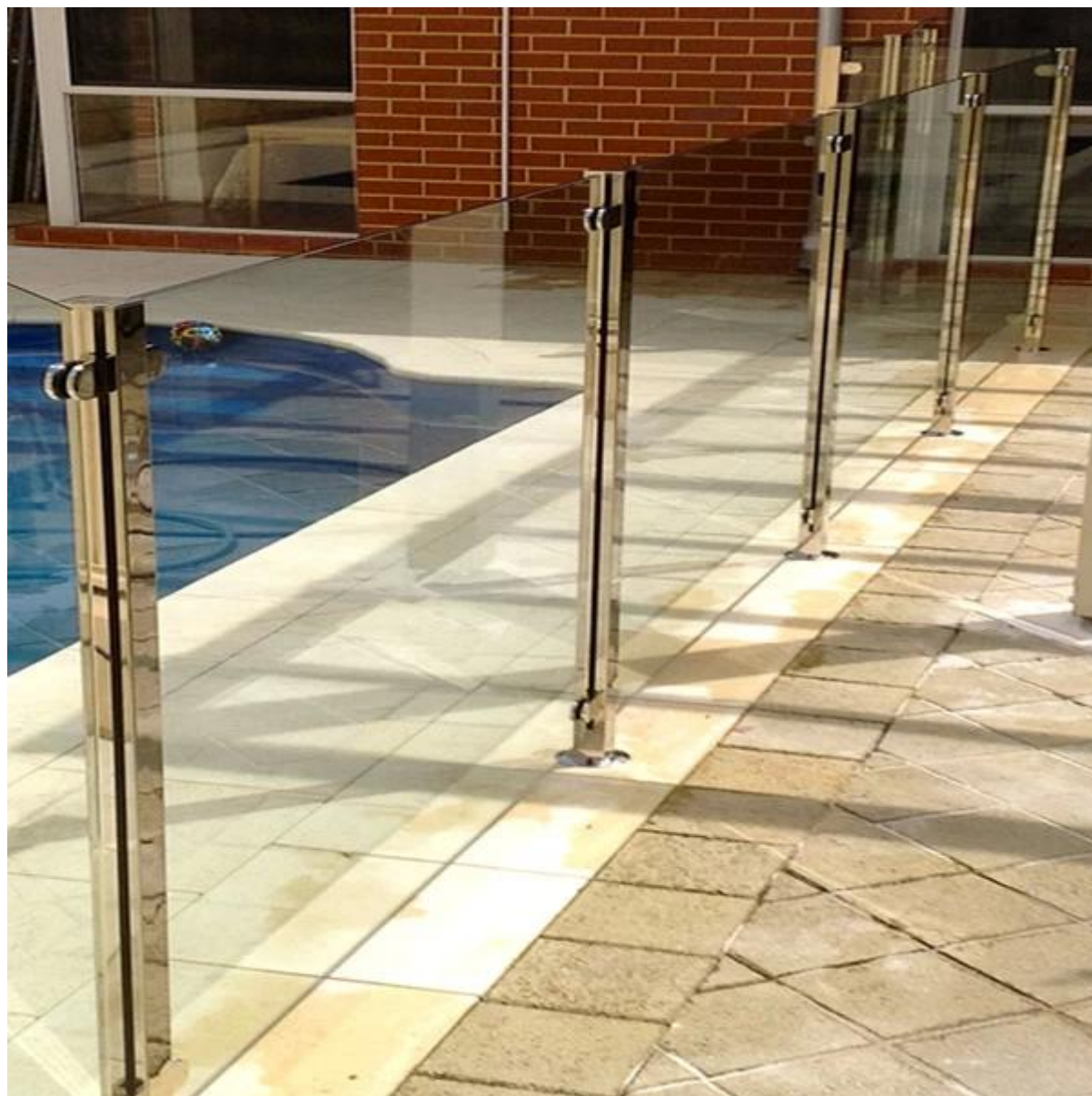
stainless steel glass handrail post with end cap for stair and balcony are very popular and beautiful for the design of stair, balcony, swimming pool fence and terrace. It is easy for installation, but with highly anti corrosion in wet weather.

1. round post: dia43/50.8mm with 1-2mm wall thickness
2. square post: 40*40/50*50mm with 1-2mm wall thickness
3. post height: 800-1500mm
4. glass thickness: 8-12mm
5. wall mounted and floor mounted post
6. there types: end post, middle post and corner post
7. MOQ: 1set
8. application: stair, balcony, pool fence and terrace, etc.
9. country: China

Product show and project show









packing pic

REGISTERED



stainless steel glass railing post with top handrail is also available
[outdoor glass railing for balcony china supplier, china outdoor glass railing for stair](#)



LCH-106

semi frameless glass railing with aluminum post

[china supplier semiframeless glass railing with aluminum post for swimming pool fence](#)



glass balustrade with glass standoff
[frameless stainless steel glass standoff for balcony, balcony design stainless steel outdoor glass standoff](#)



glass balustrade with glass spigot

[china 12mm frameless glass balustrade spigot supplier, stainless steel 12mm glass spigot for swimming pool fence](#)



stainless steel wire rope system

[stainless steel indoor wire rope railing system for staircase design,](#)
[inox304/316 cable railing with cable tensor for stair and balcony](#)



other handrail fittings glass clamp
[stainless steel round glass clamp for stair design,china stainless steel](#)
[round handrail post glass clamp for balcony](#)



G105R