

For swimming pool glass fence stainless steel 316 glass to round post spring loaded type glass hinge.

- Features of stainless steel glass to round post hinge

- Made by precision casting
- Heavy duty glass hinge
- spring loaded type
- Code G-R
- for 8-10mm glass gate
- Max. door leaf weight 30kg per pair of hinge
- Need glass holes as per our hole drawing
- we also have glass spigot , glass latch ect.

- Photo of glass to round post hinge



G-R2

Drawing of glass to round post hinge-

Spring loaded hinges

Stainless steel spring loaded hinges

-Made of SS 316

- For use of 8-12.76mm glass

Maximum door leaf weight : 30 kg /pair

Maximum door leaf width : 900mm

Spring can be adjusted for closing speed control .



Part # G-G



Part # G-R

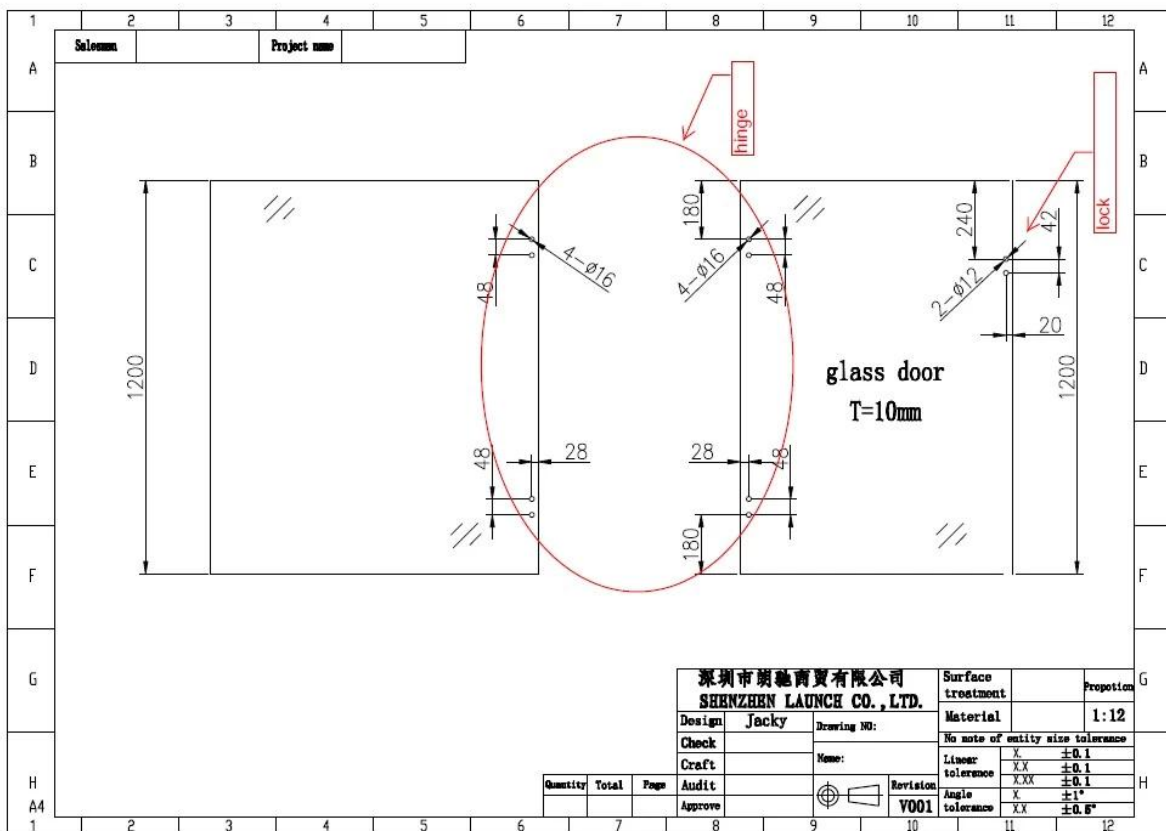


Part # G-W

SHENZHEN LAUNCH CO., LTD

1

Glass hole drawing required for glass to round post hinge -



Related glass hardware as following -

Stainless steel glass spigot ,click below photo for more details-



MODEL # SBM



MODEL # SCM



MODEL # RBM



MODEL # RCM

Glass spigot

Stainless steel glass latch ,click below photo for more details-



MODEL # GL-180



MODEL # GL-90



MODEL # GL-W



MODEL # GL-R

-Project photos of glass swimming pool fence with hinge , latch , spigot hardwares-

